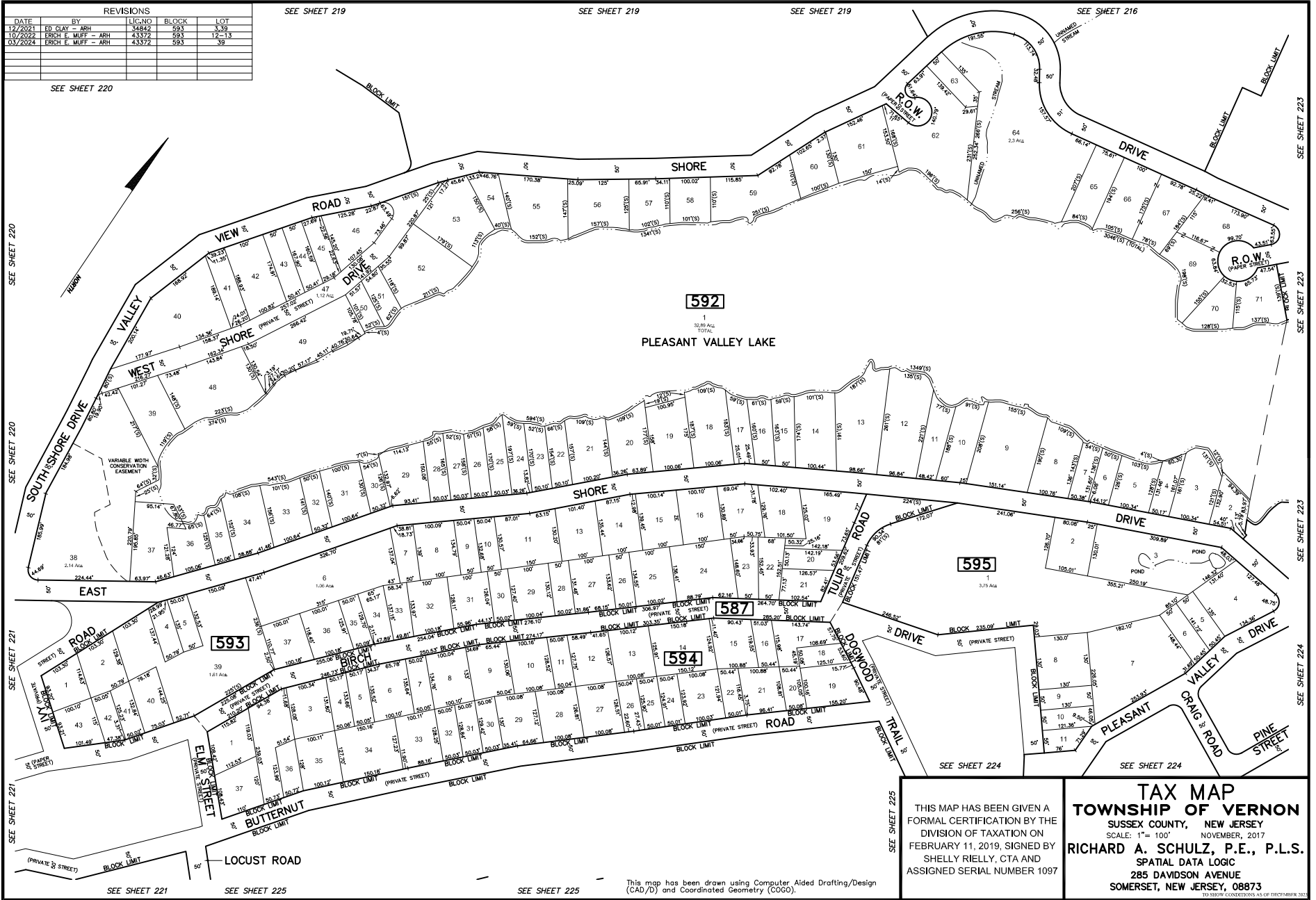


REVISIONS				
DATE	BY	LIC. NO.	BLOCK	LOT
12/2/2021	ED GLAY - ARH	54043	593	1-39
10/2/2022	ERICH E. MUFF - ARH	43572	593	12-13
03/2024	ERICH E. MUFF - ARH	43572	593	39



**TAX MAP**  
**TOWNSHIP OF VERNON**  
 SUSSEX COUNTY, NEW JERSEY  
 SCALE: 1" = 100' NOVEMBER, 2017  
 RICHARD A. SCHULZ, P.E., P.L.S.  
 SPATIAL DATA LOGIC  
 285 DAVIDSON AVENUE  
 SOMERSET, NEW JERSEY, 08873

THIS MAP HAS BEEN GIVEN A FORMAL CERTIFICATION BY THE DIVISION OF TAXATION ON FEBRUARY 11, 2019, SIGNED BY SHELLY RIELLY, CTA AND ASSIGNED SERIAL NUMBER 1097

TO SHOW CONDITIONS AS OF DECEMBER 2022

This map has been drawn using Computer Aided Drafting/Design (CAD/D) and Coordinated Geometry (COGO).