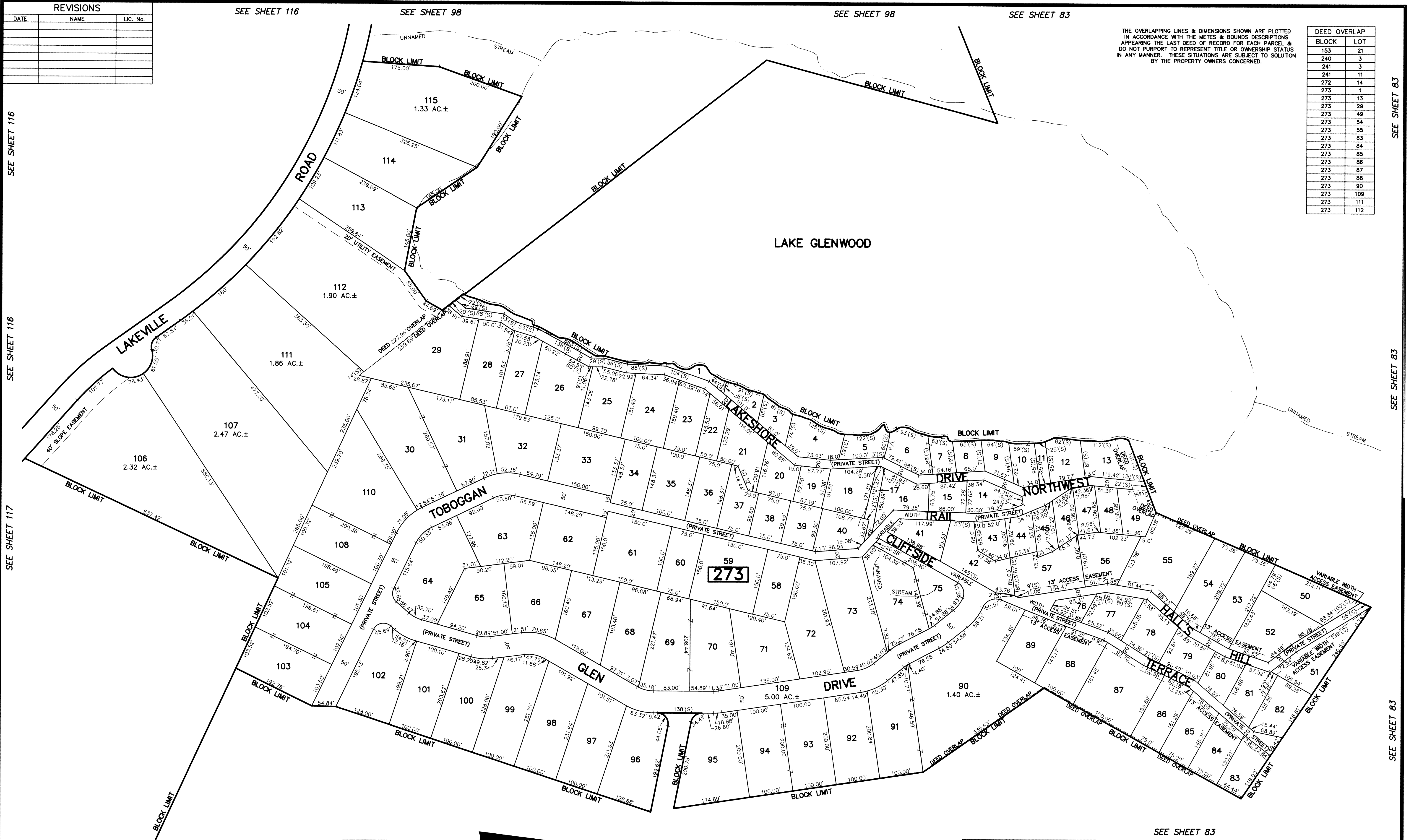


REVISIONS		
DATE	NAME	LIC. No.



THE OVERLAPPING LINES & DIMENSIONS SHOWN ARE PLOTTED IN ACCORDANCE WITH THE METES & BOUNDS DESCRIPTIONS APPEARING THE LAST DEED OF RECORD FOR EACH PARCEL & DO NOT PURPORT TO REPRESENT TITLE OR OWNERSHIP STATUS IN ANY MANNER. THESE SITUATIONS ARE SUBJECT TO SOLUTION BY THE PROPERTY OWNERS CONCERNED.

DEED OVERLAP	
BLOCK	LOT
153	21
240	3
241	3
241	11
272	14
273	1
273	13
273	29
273	49
273	54
273	55
273	83
273	84
273	85
273	86
273	87
273	88
273	90
273	109
273	111
273	112

SEE SHEET 116  
SEE SHEET 117  
SEE SHEET 117

SEE SHEET 83  
SEE SHEET 83  
SEE SHEET 83



SEE SHEET 117      SEE SHEET 83      SEE SHEET 83

NEW JERSEY DEPARTMENT OF THE TREASURY  
DIVISION OF TAXATION  
APPROVED AS A TAX MAP PURSUANT TO THE AUTHORITY OF  
N.J.S.A. 54:1-15 AND N.J.S.A. 54:5-1  
FOR THE DIRECTOR, DIVISION OF TAXATION  
*Shelly Phillips*  
*Robertson*  
FEB 11 2019      1097

SEE SHEET 83

**TAX MAP**  
**TOWNSHIP OF VERNON**  
SUSSEX COUNTY, NEW JERSEY  
SCALE: 1" = 100'      NOVEMBER, 2017  
**RICHARD A. SCHULZ, P.E., P.L.S.**  
SPATIAL DATA LOGIC  
285 DAVIDSON AVENUE  
SOMERSET, NEW JERSEY, 08873

This map has been drawn using Computer Aided Drafting/Design (CAD/D) and Coordinated Geometry (COGO).