

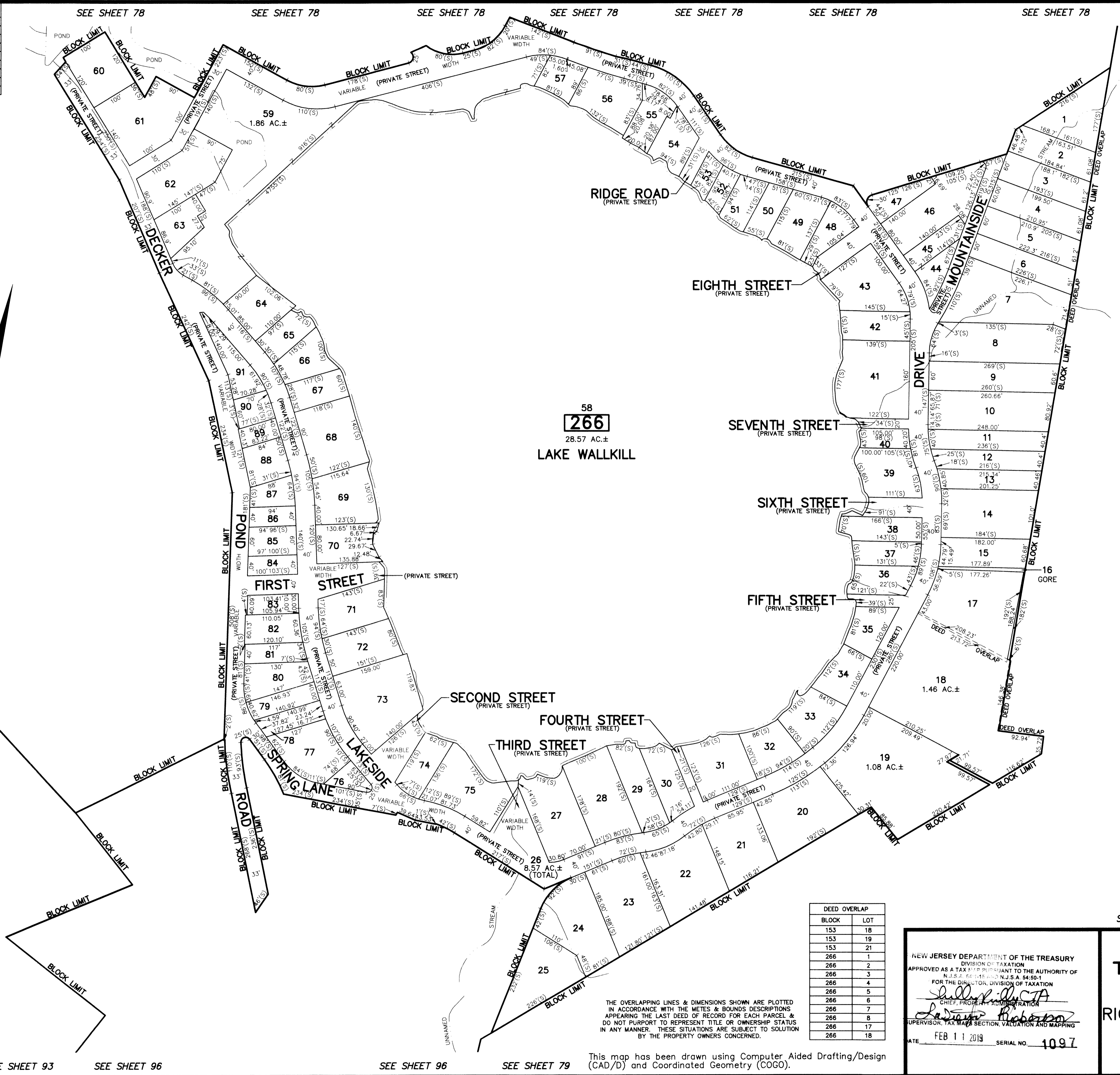
REVISIONS		
DATE	NAME	LIC. No.

SEE SHEET 94

SEE SHEET 94

SEE SHEET 93

SEE SHEET 93



SEE SHEET 78 SEE SHEET 79

SEE SHEET 79

SEE SHEET 79

SEE SHEET 79

SEE SHEET 93 SEE SHEET 96

SEE SHEET 96 SEE SHEET 79

This map has been drawn using Computer Aided Drafting/Design (CAD/D) and Coordinated Geometry (COGO).

DEED OVERLAP	
BLOCK	LOT
153	18
153	19
153	21
266	1
266	2
266	3
266	4
266	5
266	6
266	7
266	8
266	17
266	18

NEW JERSEY DEPARTMENT OF THE TREASURY
 DIVISION OF TAXATION
 APPROVED AS A TAX MAP PURSUANT TO THE AUTHORITY OF
 N.J.S.A. 54:1-15 AND N.J.S.A. 54:50-1
 FOR THE DIRECTOR, DIVISION OF TAXATION

Richard A. Schulz
 CHIEF, PROPERTY ADMINISTRATION

Richard A. Schulz
 SUPERVISOR, TAX MAPS SECTION, VALUATION AND MAPPING

DATE: FEB 11 2019 SERIAL NO. 1097

TAX MAP
TOWNSHIP OF VERNON
 SUSSEX COUNTY, NEW JERSEY
 SCALE: 1" = 100' NOVEMBER, 2017
RICHARD A. SCHULZ, P.E., P.L.S.
 SPATIAL DATA LOGIC
 285 DAVIDSON AVENUE
 SOMERSET, NEW JERSEY, 08873