

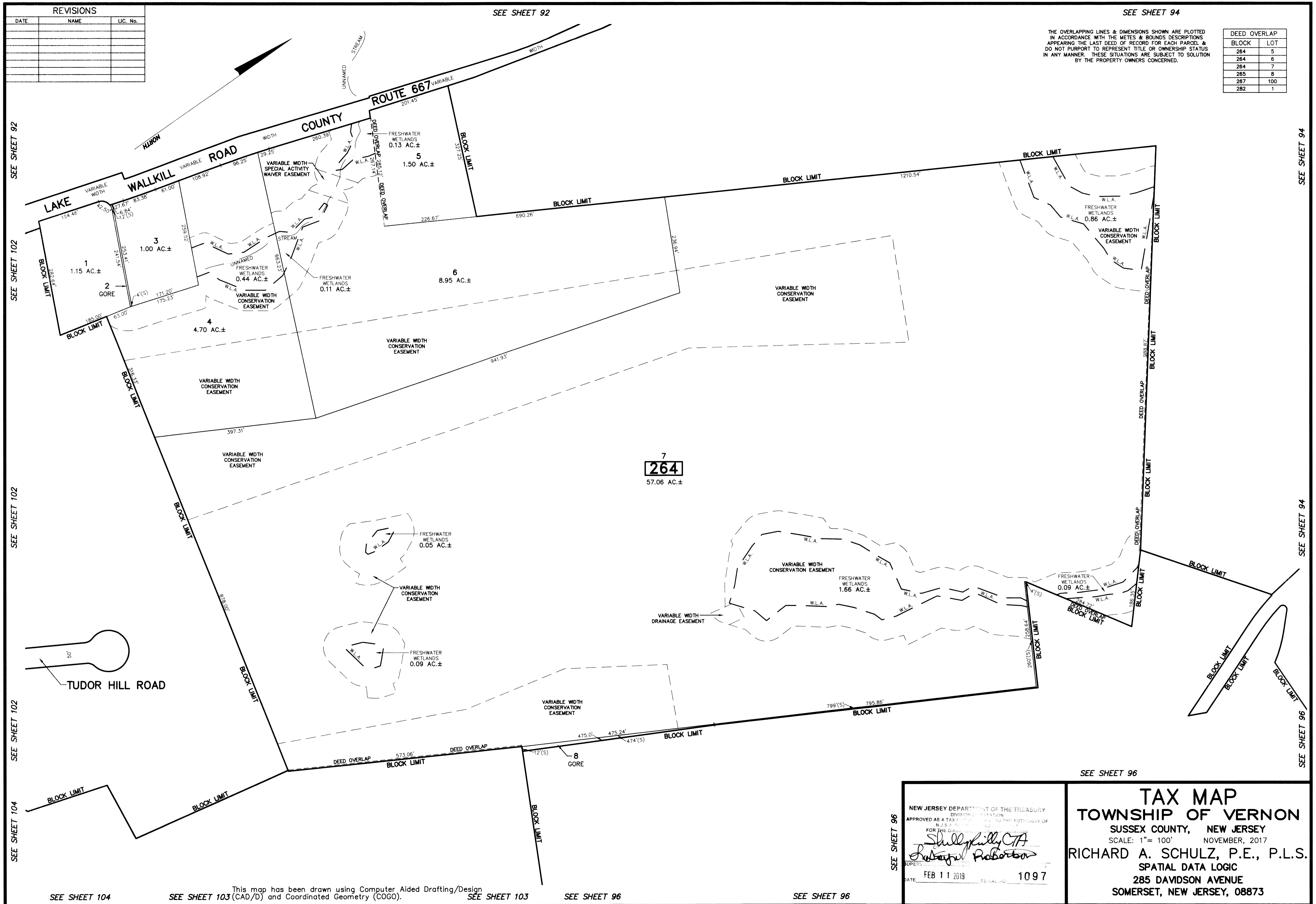
REVISIONS		
DATE	NAME	LIC. No.

SEE SHEET 92

SEE SHEET 94

THE OVERLAPPING LINES & DIMENSIONS SHOWN ARE PLOTTED IN ACCORDANCE WITH THE METES & BOUNDS DESCRIPTIONS APPEARING THE LAST DEED OF RECORD FOR EACH PARCEL & DO NOT PURPORT TO REPRESENT TITLE OR OWNERSHIP STATUS IN ANY MANNER. THESE SITUATIONS ARE SUBJECT TO SOLUTION BY THE PROPERTY OWNERS CONCERNED.

DEED OVERLAP	
BLOCK	LOT
264	5
264	6
264	7
265	8
267	100
282	1



SEE SHEET 92
SEE SHEET 102
SEE SHEET 102
SEE SHEET 102
SEE SHEET 104

SEE SHEET 94
SEE SHEET 94
SEE SHEET 96

SEE SHEET 104 This map has been drawn using Computer Aided Drafting/Design SEE SHEET 103 SEE SHEET 103 SEE SHEET 96 SEE SHEET 96

NEW JERSEY DEPARTMENT OF THE TREASURY
DIVISION OF TAXATION
APPROVED AS A TAX MAP TO BE FILED TO THE AUTHORITY OF
FOR THE DIRECTOR OF TAXATION
Shelly Kelly CTA
Robert Probert
SUPERVISOR OF TAX MAPS
DATE: FEB 11 2019 SERIAL NO: 1097

TAX MAP
TOWNSHIP OF VERNON
SUSSEX COUNTY, NEW JERSEY
SCALE: 1" = 100' NOVEMBER, 2017
RICHARD A. SCHULZ, P.E., P.L.S.
SPATIAL DATA LOGIC
285 DAVIDSON AVENUE
SOMERSET, NEW JERSEY, 08873