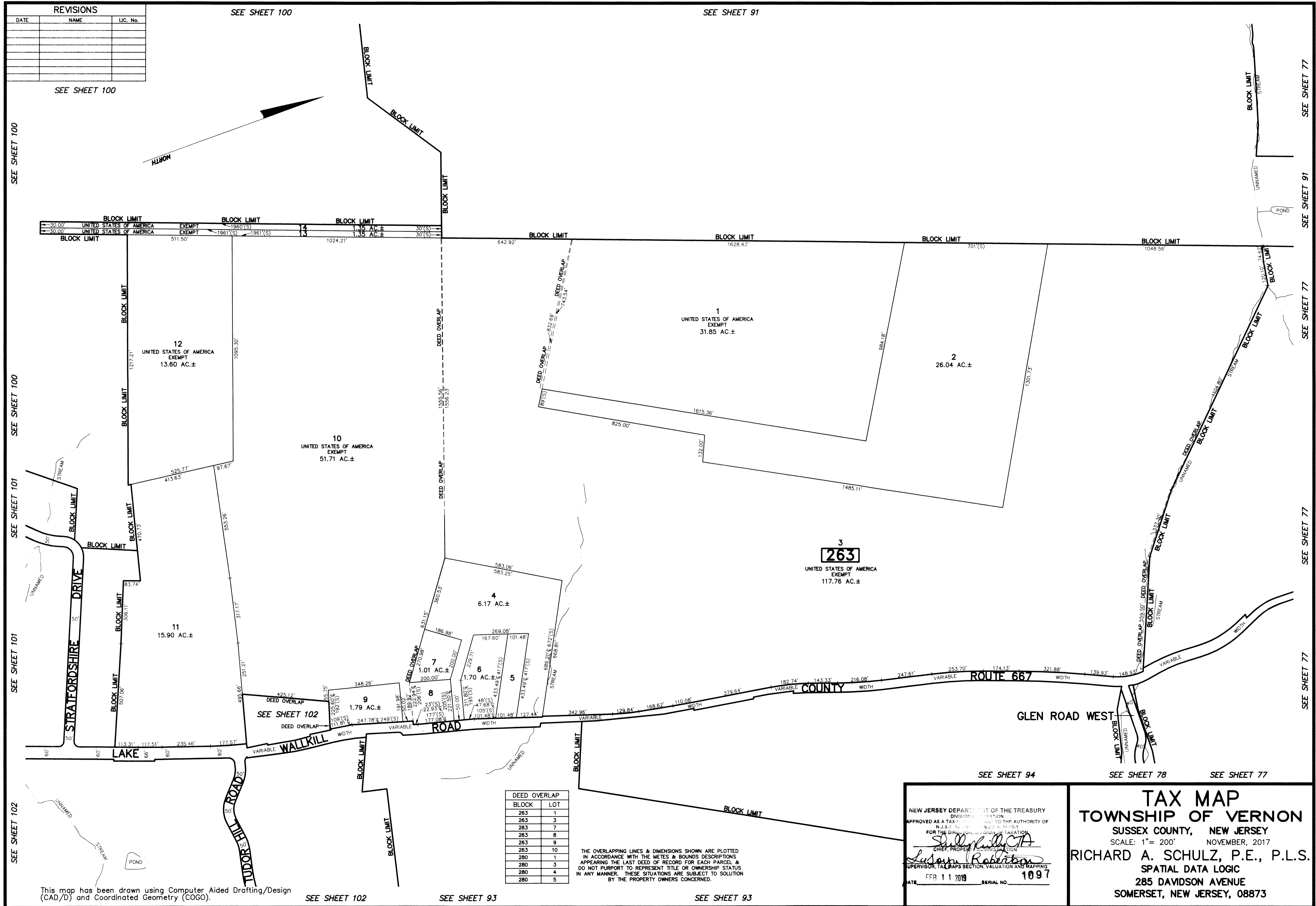


REVISIONS		
DATE	NAME	LIC. No.



SEE SHEET 100

SEE SHEET 100

SEE SHEET 91

SEE SHEET 100

SEE SHEET 100

SEE SHEET 101

SEE SHEET 101

SEE SHEET 102

SEE SHEET 77

SEE SHEET 91

SEE SHEET 77

SEE SHEET 77

SEE SHEET 77

SEE SHEET 94

SEE SHEET 78

SEE SHEET 77

This map has been drawn using Computer Aided Drafting/Design (CAD/D) and Coordinated Geometry (COGO).

SEE SHEET 102

SEE SHEET 93

SEE SHEET 93

DEED OVERLAP	BLOCK	LOT
	263	1
	263	3
	263	7
	263	8
	263	9
	263	10
	280	1
	280	3
	280	4
	280	5

THE OVERLAPPING LINES & DIMENSIONS SHOWN ARE PLOTTED IN ACCORDANCE WITH THE METES & BOUNDS DESCRIPTIONS APPEARING THE LAST DEED OF RECORD FOR EACH PARCEL & DO NOT PURPORT TO REPRESENT TITLE OR OWNERSHIP STATUS IN ANY MANNER. THESE SITUATIONS ARE SUBJECT TO SOLUTION BY THE PROPERTY OWNERS CONCERNED.

NEW JERSEY DEPARTMENT OF THE TREASURY  
 DIVISION OF TAXATION  
 APPROVED AS A TAX MAP BY THE AUTHORITY OF  
 N.J.S. 17:27 AND N.J.S. 17:28  
 FOR THE DIRECTOR, DIVISION OF TAXATION  
*Susan Robertson*  
 SUPERVISOR, TAX MAPS SECTION, VALUATION AND MAPPING  
 DATE FEB 11 2019 SERIAL NO. 1097

**TAX MAP**  
**TOWNSHIP OF VERNON**  
 SUSSEX COUNTY, NEW JERSEY  
 SCALE: 1"= 200' NOVEMBER, 2017  
**RICHARD A. SCHULZ, P.E., P.L.S.**  
 SPATIAL DATA LOGIC  
 285 DAVIDSON AVENUE  
 SOMERSET, NEW JERSEY, 08873