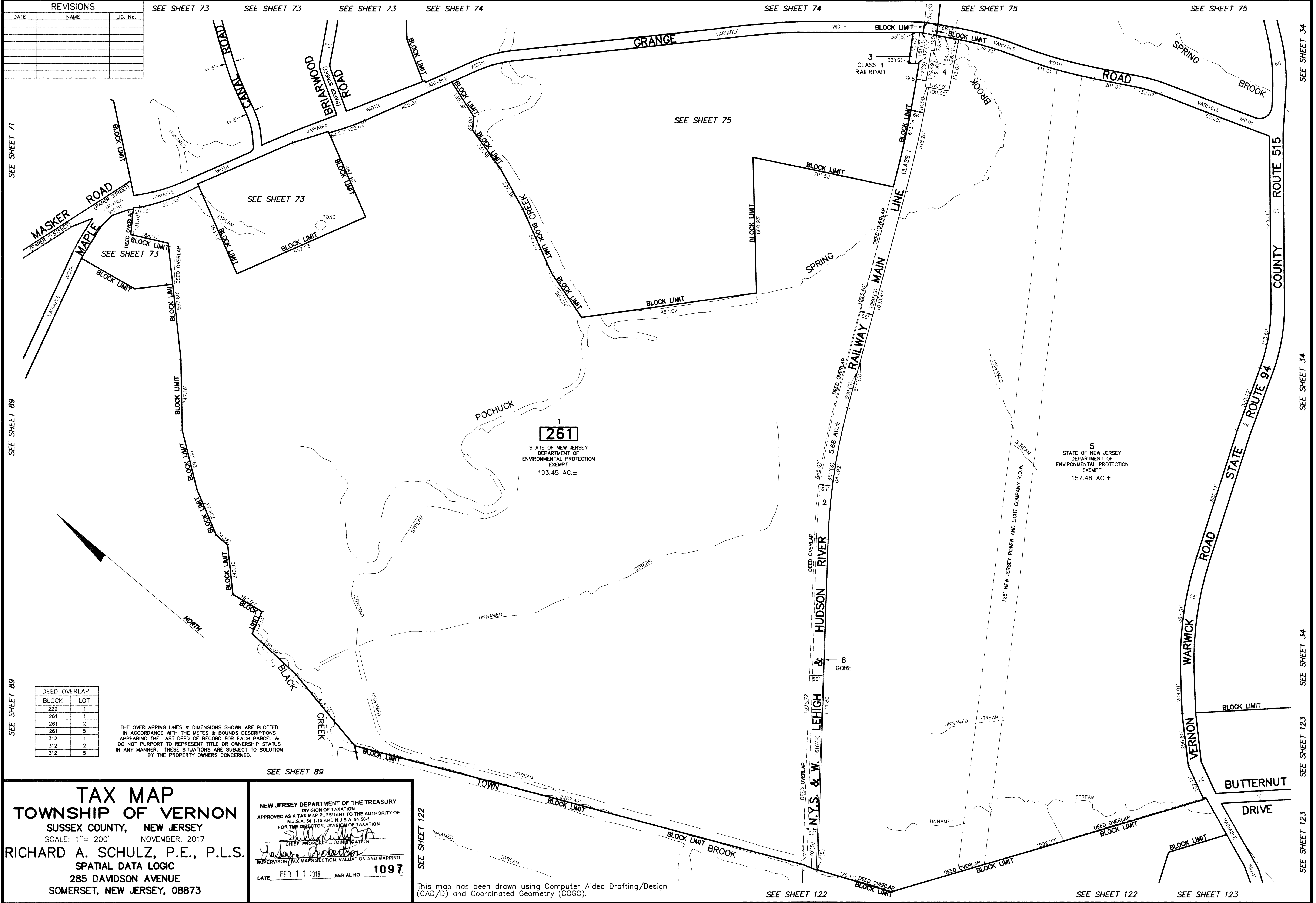


REVISIONS		
DATE	NAME	LIC. No.



1  
**261**  
STATE OF NEW JERSEY  
DEPARTMENT OF  
ENVIRONMENTAL PROTECTION  
EXEMPT  
193.45 AC.±

5  
STATE OF NEW JERSEY  
DEPARTMENT OF  
ENVIRONMENTAL PROTECTION  
EXEMPT  
157.48 AC.±

DEED OVERLAP	
BLOCK	LOT
222	1
261	1
261	2
261	5
312	1
312	2
312	5

THE OVERLAPPING LINES & DIMENSIONS SHOWN ARE PLOTTED IN ACCORDANCE WITH THE METES & BOUNDS DESCRIPTIONS APPEARING THE LAST DEED OF RECORD FOR EACH PARCEL & DO NOT PURPORT TO REPRESENT TITLE OR OWNERSHIP STATUS IN ANY MANNER. THESE SITUATIONS ARE SUBJECT TO SOLUTION BY THE PROPERTY OWNERS CONCERNED.

**TAX MAP**  
**TOWNSHIP OF VERNON**  
SUSSEX COUNTY, NEW JERSEY  
SCALE: 1" = 200'  
NOVEMBER, 2017  
RICHARD A. SCHULZ, P.E., P.L.S.  
SPATIAL DATA LOGIC  
285 DAVIDSON AVENUE  
SOMERSET, NEW JERSEY, 08873

NEW JERSEY DEPARTMENT OF THE TREASURY  
DIVISION OF TAXATION  
APPROVED AS A TAX MAP PURSUANT TO THE AUTHORITY OF  
N.J.S.A. 54:1-15 AND N.J.S.A. 54:50-1  
FOR THE DIRECTOR, DIVISION OF TAXATION  
*Sharon Robertson*  
CHIEF, PROPERTY ADMINISTRATION  
SUPERVISOR, TAX MAPS SECTION, VALUATION AND MAPPING  
DATE: FEB 11 2019 SERIAL NO. 1097

This map has been drawn using Computer Aided Drafting/Design (CAD/D) and Coordinated Geometry (COGO).

SEE SHEET 71

SEE SHEET 89

SEE SHEET 89

SEE SHEET 89

SEE SHEET 122

SEE SHEET 122

SEE SHEET 122

SEE SHEET 123

SEE SHEET 34

SEE SHEET 34

SEE SHEET 34

SEE SHEET 123

SEE SHEET 123