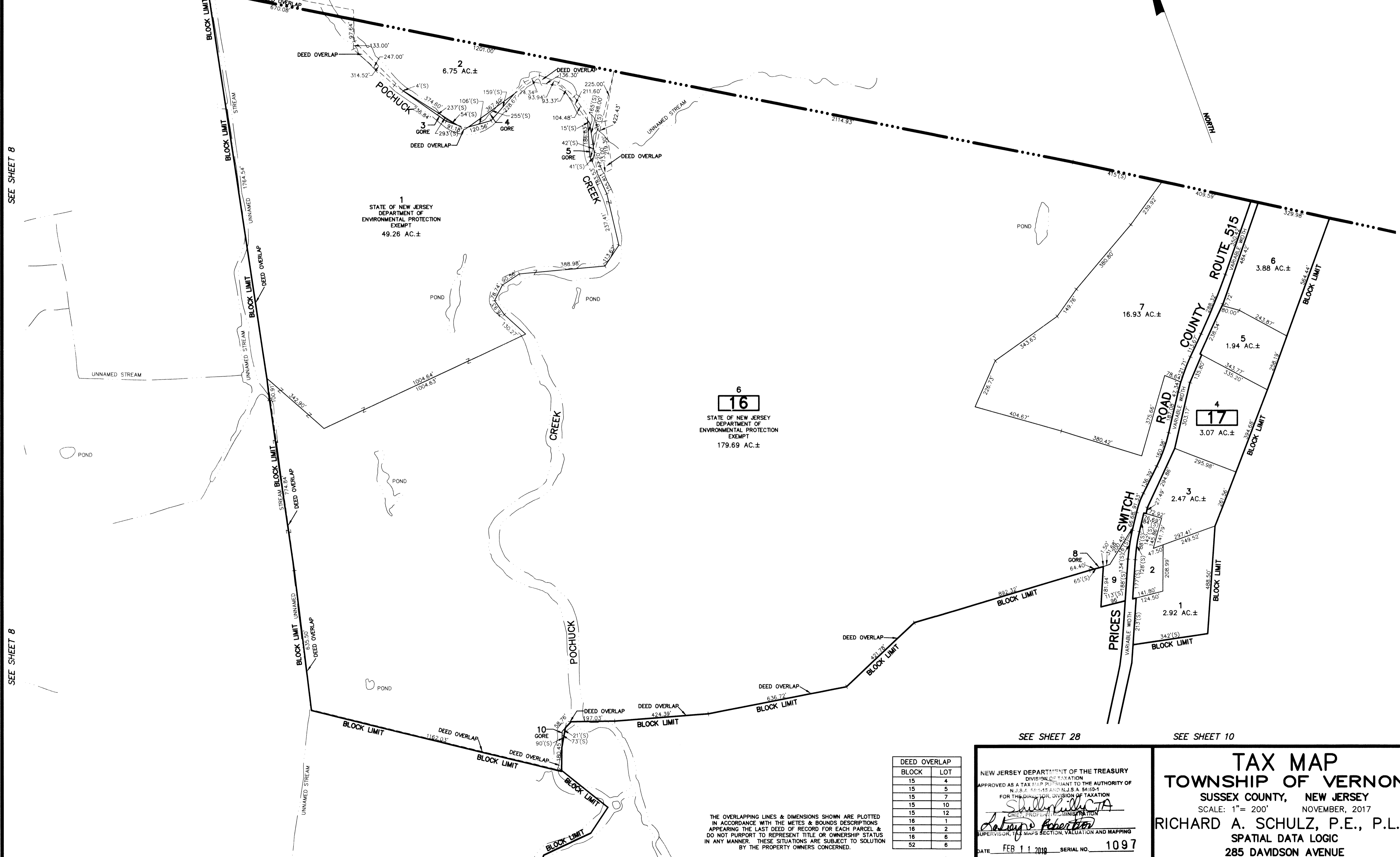


REVISIONS		
DATE	NAME	LIC. No.

STATE OF NEW YORK
ORANGE COUNTY
TOWNSHIP OF WARWICK



16
STATE OF NEW JERSEY
DEPARTMENT OF
ENVIRONMENTAL PROTECTION
EXEMPT
179.69 AC.±

17

DEED OVERLAP	
BLOCK	LOT
15	4
15	5
15	7
15	10
15	12
16	1
16	2
16	6
52	6

THE OVERLAPPING LINES & DIMENSIONS SHOWN ARE PLOTTED IN ACCORDANCE WITH THE METES & BOUNDS DESCRIPTIONS APPEARING THE LAST DEED OF RECORD FOR EACH PARCEL & DO NOT PURPORT TO REPRESENT TITLE OR OWNERSHIP STATUS IN ANY MANNER. THESE SITUATIONS ARE SUBJECT TO SOLUTION BY THE PROPERTY OWNERS CONCERNED.

This map has been drawn using Computer Aided Drafting/Design (CAD/D) and Coordinated Geometry (COGO).

NEW JERSEY DEPARTMENT OF THE TREASURY
DIVISION OF TAXATION
APPROVED AS A TAX MAP PURSUANT TO THE AUTHORITY OF
N.J.S.A. 54:15 AND N.J.S.A. 54:60-1
FOR THE DIRECTOR, DIVISION OF TAXATION
Shirley L. DeLoe
CHIEF, PROPERTY ADMINISTRATION
Richard A. Schulz
SUPERVISOR, TAX MAPS SECTION, VALUATION AND MAPPING
DATE FEB 11 2010 SERIAL NO. 1097

TAX MAP
TOWNSHIP OF VERNON
SUSSEX COUNTY, NEW JERSEY
SCALE: 1" = 200' NOVEMBER, 2017
RICHARD A. SCHULZ, P.E., P.L.S.
SPATIAL DATA LOGIC
285 DAVIDSON AVENUE
SOMERSET, NEW JERSEY, 08873

SEE SHEET 10

SEE SHEET 8

SEE SHEET 8

SEE SHEET 8

SEE SHEET 28

SEE SHEET 28

SEE SHEET 10