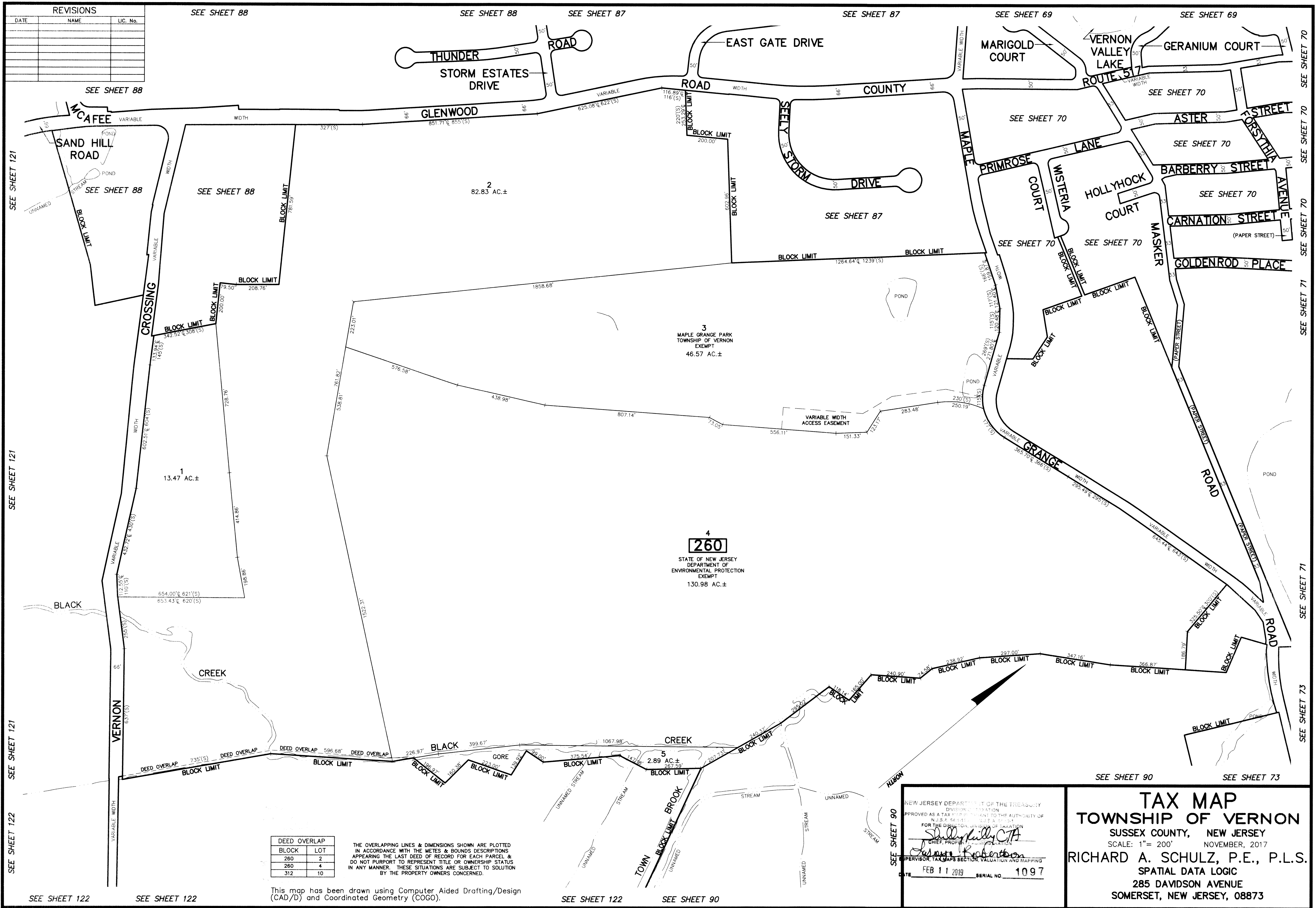


REVISIONS		
DATE	NAME	LIC. No.



DEED OVERLAP	
BLOCK	LOT
260	2
260	4
312	10

THE OVERLAPPING LINES & DIMENSIONS SHOWN ARE PLOTTED IN ACCORDANCE WITH THE METES & BOUNDS DESCRIPTIONS APPEARING IN THE LAST DEED OF RECORD FOR EACH PARCEL & DO NOT PURPORT TO REPRESENT TITLE OR OWNERSHIP STATUS IN ANY MANNER. THESE SITUATIONS ARE SUBJECT TO SOLUTION BY THE PROPERTY OWNERS CONCERNED.

This map has been drawn using Computer Aided Drafting/Design (CAD/D) and Coordinated Geometry (COGO).

**260**

STATE OF NEW JERSEY  
DEPARTMENT OF  
ENVIRONMENTAL PROTECTION  
EXEMPT  
130.98 AC.±

NEW JERSEY DEPARTMENT OF THE TREASURY  
DIVISION OF TAXATION  
APPROVED AS A TAX MAP PRESENT TO THE AUTHORITY OF  
N.J.S.A. 54:14-11, 54:14-12, 54:14-13, 54:14-14  
FOR THE DIRECTOR, DIVISION OF TAXATION  
CHIEF, PROFESSIONAL SURVEYING  
*James Robertson*  
SUPERVISOR, TAX MAPS SECTION, VALUATION AND MAPPING  
DATE FEB 11 2019 SERIAL NO. 1097

**TAX MAP**  
**TOWNSHIP OF VERNON**  
SUSSEX COUNTY, NEW JERSEY  
SCALE: 1" = 200' NOVEMBER, 2017  
**RICHARD A. SCHULZ, P.E., P.L.S.**  
SPATIAL DATA LOGIC  
285 DAVIDSON AVENUE  
SOMERSET, NEW JERSEY, 08873

SEE SHEET 121  
SEE SHEET 121  
SEE SHEET 121  
SEE SHEET 122

SEE SHEET 70  
SEE SHEET 70  
SEE SHEET 70  
SEE SHEET 71  
SEE SHEET 71  
SEE SHEET 73