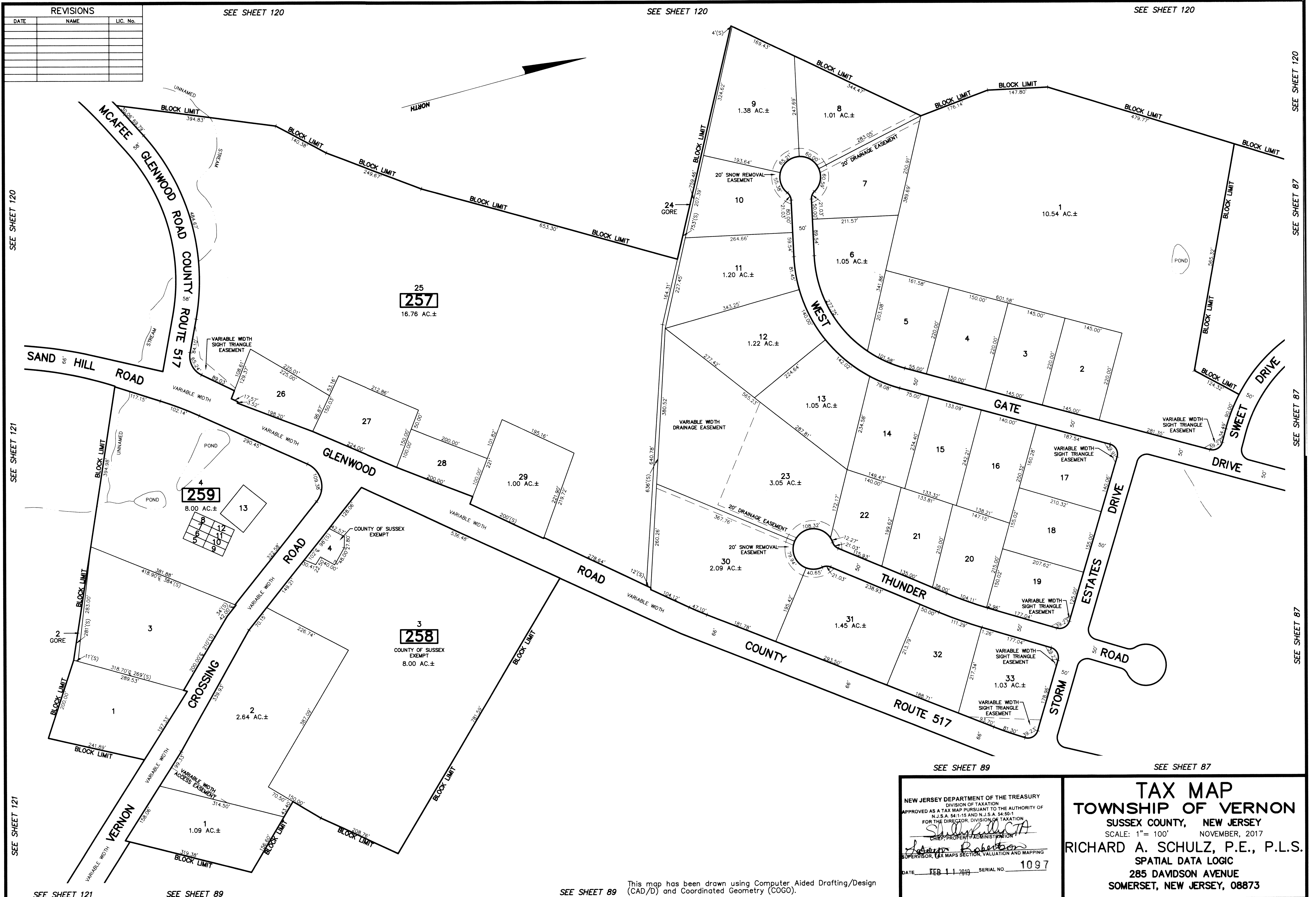


REVISIONS		
DATE	NAME	LIC. No.

SEE SHEET 120

SEE SHEET 120

SEE SHEET 120



SEE SHEET 120

SEE SHEET 121

SEE SHEET 121

SEE SHEET 120

SEE SHEET 87

SEE SHEET 87

SEE SHEET 87

SEE SHEET 89

SEE SHEET 87

SEE SHEET 121

SEE SHEET 89

SEE SHEET 89

This map has been drawn using Computer Aided Drafting/Design (CAD/D) and Coordinated Geometry (COGO).

NEW JERSEY DEPARTMENT OF THE TREASURY
 DIVISION OF TAXATION
 APPROVED AS A TAX MAP PURSUANT TO THE AUTHORITY OF
 N.J.S.A. 54:1-15 AND N.J.S.A. 54:50-1
 FOR THE DIRECTOR, DIVISION OF TAXATION
Shirley L. CTA
 CHIEF, PROPERTY ADMINISTRATION
Robert
 SUPERVISOR, TAX MAPS SECTION, VALUATION AND MAPPING
 DATE FEB 11 2010 SERIAL NO. 1097

TAX MAP
TOWNSHIP OF VERNON
 SUSSEX COUNTY, NEW JERSEY
 SCALE: 1" = 100' NOVEMBER, 2017
 RICHARD A. SCHULZ, P.E., P.L.S.
 SPATIAL DATA LOGIC
 285 DAVIDSON AVENUE
 SOMERSET, NEW JERSEY, 08873