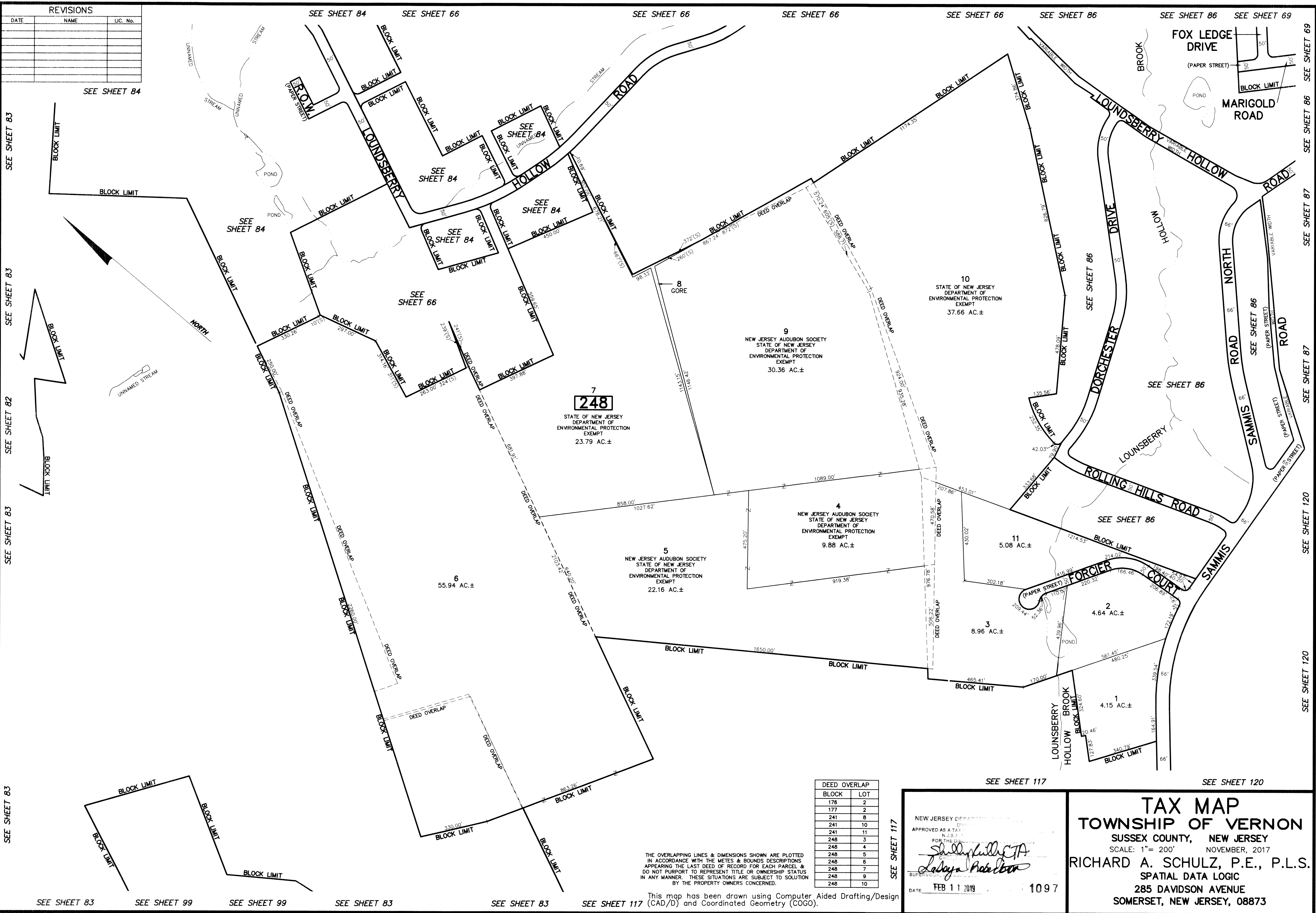


REVISIONS		
DATE	NAME	LIC. No.



**7**  
**248**

STATE OF NEW JERSEY  
DEPARTMENT OF  
ENVIRONMENTAL PROTECTION  
EXEMPT  
23.79 AC.±

**9**  
NEW JERSEY AUDUBON SOCIETY  
STATE OF NEW JERSEY  
DEPARTMENT OF  
ENVIRONMENTAL PROTECTION  
EXEMPT  
30.36 AC.±

**4**  
NEW JERSEY AUDUBON SOCIETY  
STATE OF NEW JERSEY  
DEPARTMENT OF  
ENVIRONMENTAL PROTECTION  
EXEMPT  
9.88 AC.±

**5**  
NEW JERSEY AUDUBON SOCIETY  
STATE OF NEW JERSEY  
DEPARTMENT OF  
ENVIRONMENTAL PROTECTION  
EXEMPT  
22.16 AC.±

**6**  
55.94 AC.±

**10**  
STATE OF NEW JERSEY  
DEPARTMENT OF  
ENVIRONMENTAL PROTECTION  
EXEMPT  
37.66 AC.±

**11**  
5.08 AC.±

**2**  
4.64 AC.±

**3**  
8.96 AC.±

**1**  
4.15 AC.±

BLOCK	LOT
178	2
177	2
241	8
241	10
241	11
248	3
248	4
248	5
248	6
248	7
248	9
248	10

THE OVERLAPPING LINES & DIMENSIONS SHOWN ARE PLOTTED IN ACCORDANCE WITH THE METES & BOUNDS DESCRIPTIONS APPEARING THE LAST DEED OF RECORD FOR EACH PARCEL & DO NOT PURPORT TO REPRESENT TITLE OR OWNERSHIP STATUS IN ANY MANNER. THESE SITUATIONS ARE SUBJECT TO SOLUTION BY THE PROPERTY OWNERS CONCERNED.

This map has been drawn using Computer Aided Drafting/Design (CAD/D) and Coordinated Geometry (COGO).

NEW JERSEY DEPARTMENT OF ENVIRONMENTAL PROTECTION  
APPROVED AS A TAX MAP  
FOR THE TOWNSHIP OF VERNON, NEW JERSEY  
SUPERVISOR  
*Shelly Kelly, P.E.*  
*Lalaya Price, P.E.*  
DATE FEB 11 2019 1097

**TAX MAP**  
**TOWNSHIP OF VERNON**  
SUSSEX COUNTY, NEW JERSEY  
SCALE: 1" = 200' NOVEMBER, 2017  
**RICHARD A. SCHULZ, P.E., P.L.S.**  
SPATIAL DATA LOGIC  
285 DAVIDSON AVENUE  
SOMERSET, NEW JERSEY, 08873