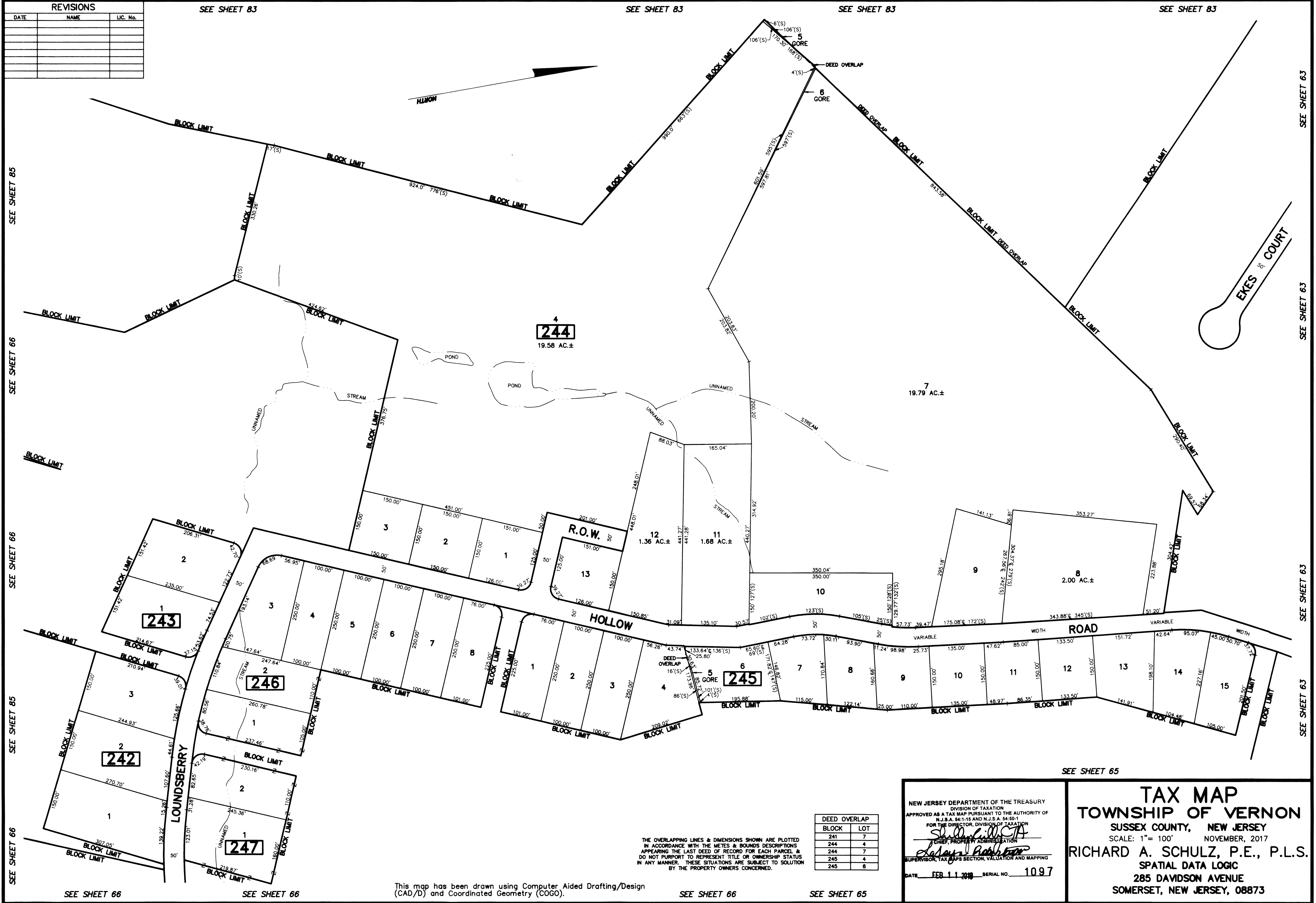


| REVISIONS |      |          |
|-----------|------|----------|
| DATE      | NAME | LIC. No. |
|           |      |          |
|           |      |          |
|           |      |          |
|           |      |          |
|           |      |          |
|           |      |          |
|           |      |          |
|           |      |          |
|           |      |          |
|           |      |          |



SEE SHEET 85  
SEE SHEET 66  
SEE SHEET 66  
SEE SHEET 85  
SEE SHEET 66

SEE SHEET 63  
SEE SHEET 63  
SEE SHEET 63  
SEE SHEET 63  
SEE SHEET 63

| DEED OVERLAP |     |
|--------------|-----|
| BLOCK        | LOT |
| 241          | 7   |
| 244          | 4   |
| 244          | 7   |
| 245          | 4   |
| 245          | 6   |

THE OVERLAPPING LINES & DIMENSIONS SHOWN ARE PLOTTED IN ACCORDANCE WITH THE METES & BOUNDS DESCRIPTIONS APPEARING THE LAST DEED OF RECORD FOR EACH PARCEL & DO NOT PURPORT TO REPRESENT TITLE OR OWNERSHIP STATUS IN ANY MANNER. THESE SITUATIONS ARE SUBJECT TO SOLUTION BY THE PROPERTY OWNERS CONCERNED.

This map has been drawn using Computer Aided Drafting/Design (CAD/D) and Coordinated Geometry (COGO).

SEE SHEET 66

SEE SHEET 65

NEW JERSEY DEPARTMENT OF THE TREASURY  
DIVISION OF TAXATION  
APPROVED AS A TAX MAP PURSUANT TO THE AUTHORITY OF  
N.J.S.A. 54:1-15 AND N.J.S.A. 54:50-1  
FOR THE DIRECTOR, DIVISION OF TAXATION  
*Sharon L. Smith*  
CHIEF, PROPERTY ADMINISTRATION  
*Richard A. Schulz*  
SUPERVISOR, TAX MAPS SECTION, VALUATION AND MAPPING  
DATE FEB 11 2010 SERIAL NO. 1097

SEE SHEET 65

**TAX MAP**  
**TOWNSHIP OF VERNON**  
SUSSEX COUNTY, NEW JERSEY  
SCALE: 1"= 100' NOVEMBER, 2017  
**RICHARD A. SCHULZ, P.E., P.L.S.**  
SPATIAL DATA LOGIC  
285 DAVIDSON AVENUE  
SOMERSET, NEW JERSEY, 08873