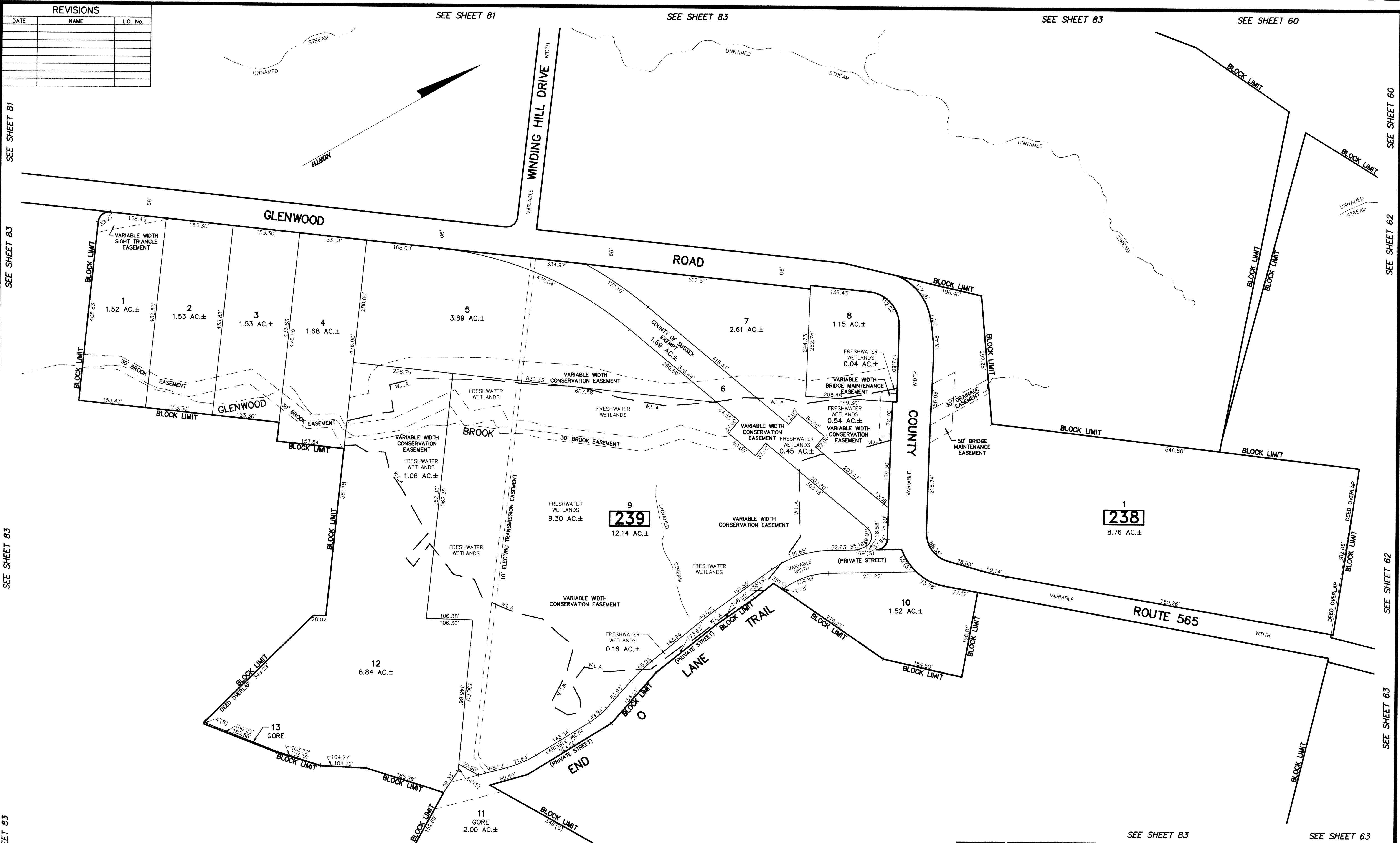


REVISIONS		
DATE	NAME	LIC. No.



THE OVERLAPPING LINES & DIMENSIONS SHOWN ARE PLOTTED IN ACCORDANCE WITH THE METES & BOUNDS DESCRIPTIONS APPEARING THE LAST DEED OF RECORD FOR EACH PARCEL & DO NOT PURPORT TO REPRESENT TITLE OR OWNERSHIP STATUS IN ANY MANNER. THESE SITUATIONS ARE SUBJECT TO SOLUTION BY THE PROPERTY OWNERS CONCERNED.

DEED OVERLAP	
BLOCK	LOT
168	2
238	1
239	12
241	8

SEE SHEET 83 SEE SHEET 83

SEE SHEET 83 This map has been drawn using Computer Aided Drafting/Design (CAD/D) and Coordinated Geometry (COGO).

APPROVED BY THE TOWNSHIP SUPERVISOR, TAX MAPS SECTION, VALUATION AND MAPPING

Richard A. Schulz
 SUPERVISOR, TAX MAPS SECTION, VALUATION AND MAPPING

FEB 11 2019 SERIAL NO. 1097

TAX MAP
TOWNSHIP OF VERNON
 SUSSEX COUNTY, NEW JERSEY
 SCALE: 1" = 100' NOVEMBER, 2017
RICHARD A. SCHULZ, P.E., P.L.S.
 SPATIAL DATA LOGIC
 285 DAVIDSON AVENUE
 SOMERSET, NEW JERSEY, 08873