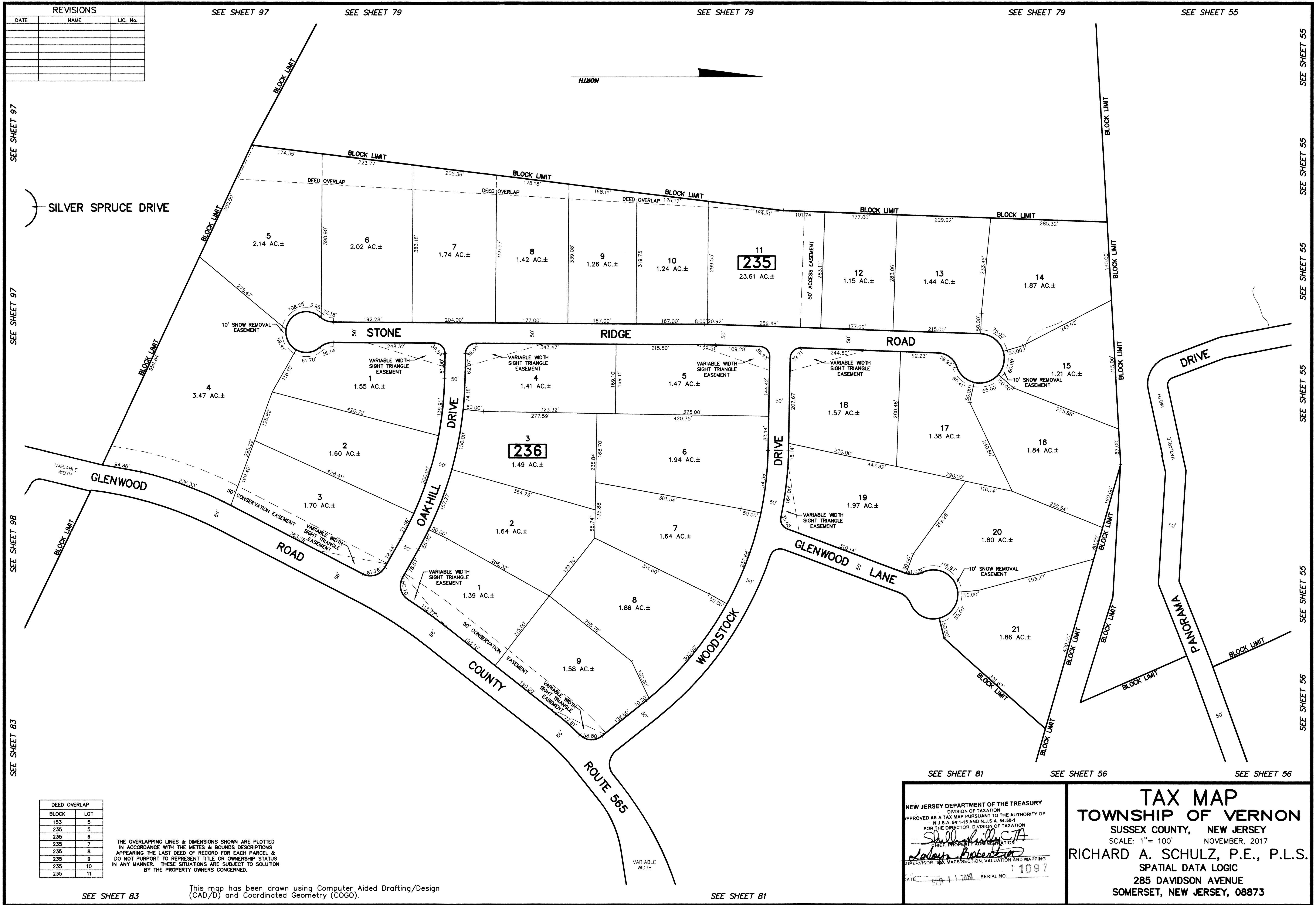


REVISIONS		
DATE	NAME	LIC. No.



SEE SHEET 97

SEE SHEET 97

SEE SHEET 98

SEE SHEET 83

SEE SHEET 97

SEE SHEET 79

SEE SHEET 79

SEE SHEET 79

SEE SHEET 55

SEE SHEET 55

SEE SHEET 55

SEE SHEET 55

SEE SHEET 55

SEE SHEET 55

SEE SHEET 56

SEE SHEET 81

SEE SHEET 56

SEE SHEET 56

DEED OVERLAP	
BLOCK	LOT
153	5
235	5
235	6
235	7
235	8
235	9
235	10
235	11

THE OVERLAPPING LINES & DIMENSIONS SHOWN ARE PLOTTED IN ACCORDANCE WITH THE METES & BOUNDS DESCRIPTIONS APPEARING THE LAST DEED OF RECORD FOR EACH PARCEL & DO NOT PURPORT TO REPRESENT TITLE OR OWNERSHIP STATUS IN ANY MANNER. THESE SITUATIONS ARE SUBJECT TO SOLUTION BY THE PROPERTY OWNERS CONCERNED.

This map has been drawn using Computer Aided Drafting/Design (CAD/D) and Coordinated Geometry (COGO).

SEE SHEET 83

SEE SHEET 81

NEW JERSEY DEPARTMENT OF THE TREASURY
 DIVISION OF TAXATION
 APPROVED AS A TAX MAP PURSUANT TO THE AUTHORITY OF
 N.J.S.A. 54:1-15 AND N.J.S.A. 54:50-1
 FOR THE DIRECTOR, DIVISION OF TAXATION
Shelley Kelly
 CHIEF, PROPERTY ADMINISTRATION
Richard A. Schulz
 SUPERVISOR, TAX MAPS SECTION, VALUATION AND MAPPING
 DATE: FEB 11 2019 SERIAL NO. 1097

TAX MAP
TOWNSHIP OF VERNON
 SUSSEX COUNTY, NEW JERSEY
 SCALE: 1"= 100' NOVEMBER, 2017
RICHARD A. SCHULZ, P.E., P.L.S.
 SPATIAL DATA LOGIC
 285 DAVIDSON AVENUE
 SOMERSET, NEW JERSEY, 08873