

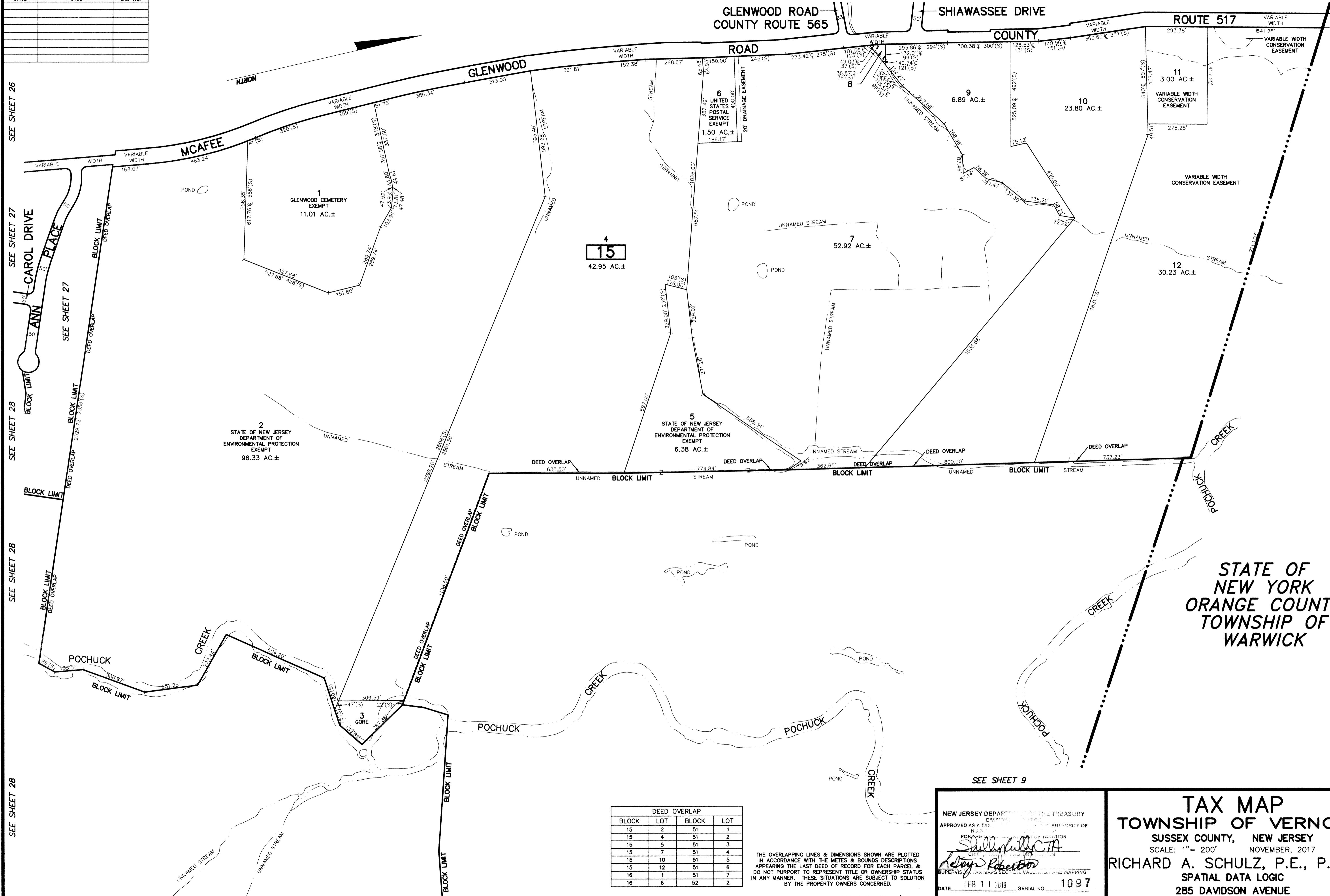
REVISIONS		
DATE	NAME	LIC. No.

SEE SHEET 26

SEE SHEET 26

SEE SHEET 7

SEE SHEET 7



SEE SHEET 26
SEE SHEET 27
SEE SHEET 28
SEE SHEET 28
SEE SHEET 28
SEE SHEET 28

15
42.95 AC.±

2
STATE OF NEW JERSEY
DEPARTMENT OF
ENVIRONMENTAL PROTECTION
EXEMPT
96.33 AC.±

5
STATE OF NEW JERSEY
DEPARTMENT OF
ENVIRONMENTAL PROTECTION
EXEMPT
6.38 AC.±

1
GLENWOOD CEMETERY
EXEMPT
11.01 AC.±

6
UNITED STATES
POSTAL SERVICE
EXEMPT
1.50 AC.±

9
6.89 AC.±

10
23.80 AC.±

11
3.00 AC.±

12
30.23 AC.±

SEE SHEET 28

SEE SHEET 9

SEE SHEET 9

DEED OVERLAP			
BLOCK	LOT	BLOCK	LOT
15	2	51	1
15	4	51	2
15	5	51	3
15	7	51	4
15	10	51	5
15	12	51	6
16	1	51	7
16	6	52	2

THE OVERLAPPING LINES & DIMENSIONS SHOWN ARE PLOTTED IN ACCORDANCE WITH THE METES & BOUNDS DESCRIPTIONS APPEARING THE LAST DEED OF RECORD FOR EACH PARCEL & DO NOT PURPORT TO REPRESENT TITLE OR OWNERSHIP STATUS IN ANY MANNER. THESE SITUATIONS ARE SUBJECT TO SOLUTION BY THE PROPERTY OWNERS CONCERNED.

This map has been drawn using Computer Aided Drafting/Design (CAD/D) and Coordinated Geometry (COGO).

NEW JERSEY DEPARTMENT OF THE TREASURY
DIVISION OF TAXATION
APPROVED AS A TAX MAP BY THE AUTHORITY OF
N.J.S.A. 17:27
FOR THE SUPERVISOR OF TAXATION
Shelly Kelly, CPA
SUPERVISOR OF TAXATION
Robert Robert
SUPERVISOR OF TAXATION SECTION, VALUATION AND MAPPING
DATE FEB 11 2019 SERIAL NO. 1097

TAX MAP
TOWNSHIP OF VERNON
SUSSEX COUNTY, NEW JERSEY
SCALE: 1" = 200' NOVEMBER, 2017
RICHARD A. SCHULZ, P.E., P.L.S.
SPATIAL DATA LOGIC
285 DAVIDSON AVENUE
SOMERSET, NEW JERSEY, 08873