

REVISIONS		
DATE	NAME	LIC. No.

SEE SHEET 96

SEE SHEET 94

SEE SHEET 95

SEE SHEET 78

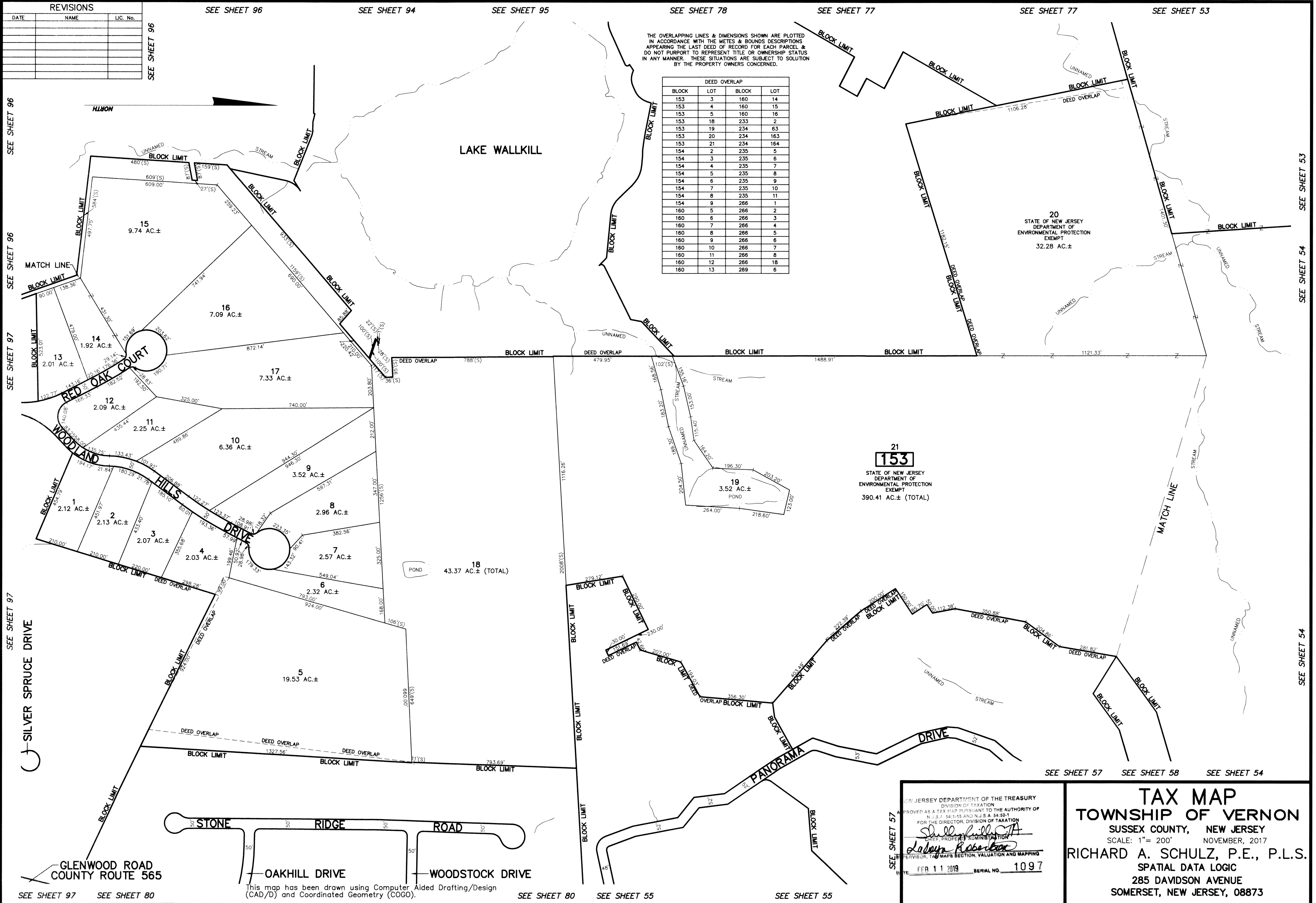
SEE SHEET 77

SEE SHEET 77

SEE SHEET 53

THE OVERLAPPING LINES & DIMENSIONS SHOWN ARE PLOTTED IN ACCORDANCE WITH THE METES & BOUNDS DESCRIPTIONS APPEARING THE LAST DEED OF RECORD FOR EACH PARCEL & DO NOT PURPORT TO REPRESENT TITLE OR OWNERSHIP STATUS IN ANY MANNER. THESE SITUATIONS ARE SUBJECT TO SOLUTION BY THE PROPERTY OWNERS CONCERNED.

DEED OVERLAP			
BLOCK	LOT	BLOCK	LOT
153	3	160	14
153	4	160	15
153	5	160	16
153	18	233	2
153	19	234	63
153	20	234	163
153	21	234	164
154	2	235	5
154	3	235	6
154	4	235	7
154	5	235	8
154	6	235	9
154	7	235	10
154	8	235	11
154	9	266	1
160	5	266	2
160	6	266	3
160	7	266	4
160	8	266	5
160	9	266	6
160	10	266	7
160	11	266	8
160	12	266	18
160	13	289	6



21
153
STATE OF NEW JERSEY
DEPARTMENT OF
ENVIRONMENTAL PROTECTION
EXEMPT
390.41 AC.± (TOTAL)

NEW JERSEY DEPARTMENT OF THE TREASURY
DIVISION OF TAXATION
APPROVED AS A TAX MAP PURSUANT TO THE AUTHORITY OF
N.J.S. 54:1-13 AND N.J.S.A. 54:50-1
FOR THE DIRECTOR, DIVISION OF TAXATION
CHIEF PROPERTY ADMINISTRATION
Shelley Hill
Loreen Robertson
DATE FEB 11 2019 SERIAL NO. 1097

TAX MAP
TOWNSHIP OF VERNON
SUSSEX COUNTY, NEW JERSEY
SCALE: 1" = 200' NOVEMBER, 2017
RICHARD A. SCHULZ, P.E., P.L.S.
SPATIAL DATA LOGIC
285 DAVIDSON AVENUE
SOMERSET, NEW JERSEY, 08873

SEE SHEET 97 SEE SHEET 80

This map has been drawn using Computer Aided Drafting/Design (CAD/D) and Coordinated Geometry (COGO).

SEE SHEET 80

SEE SHEET 55

SEE SHEET 55

SEE SHEET 57 SEE SHEET 58 SEE SHEET 54

SEE SHEET 53

SEE SHEET 54

SEE SHEET 54