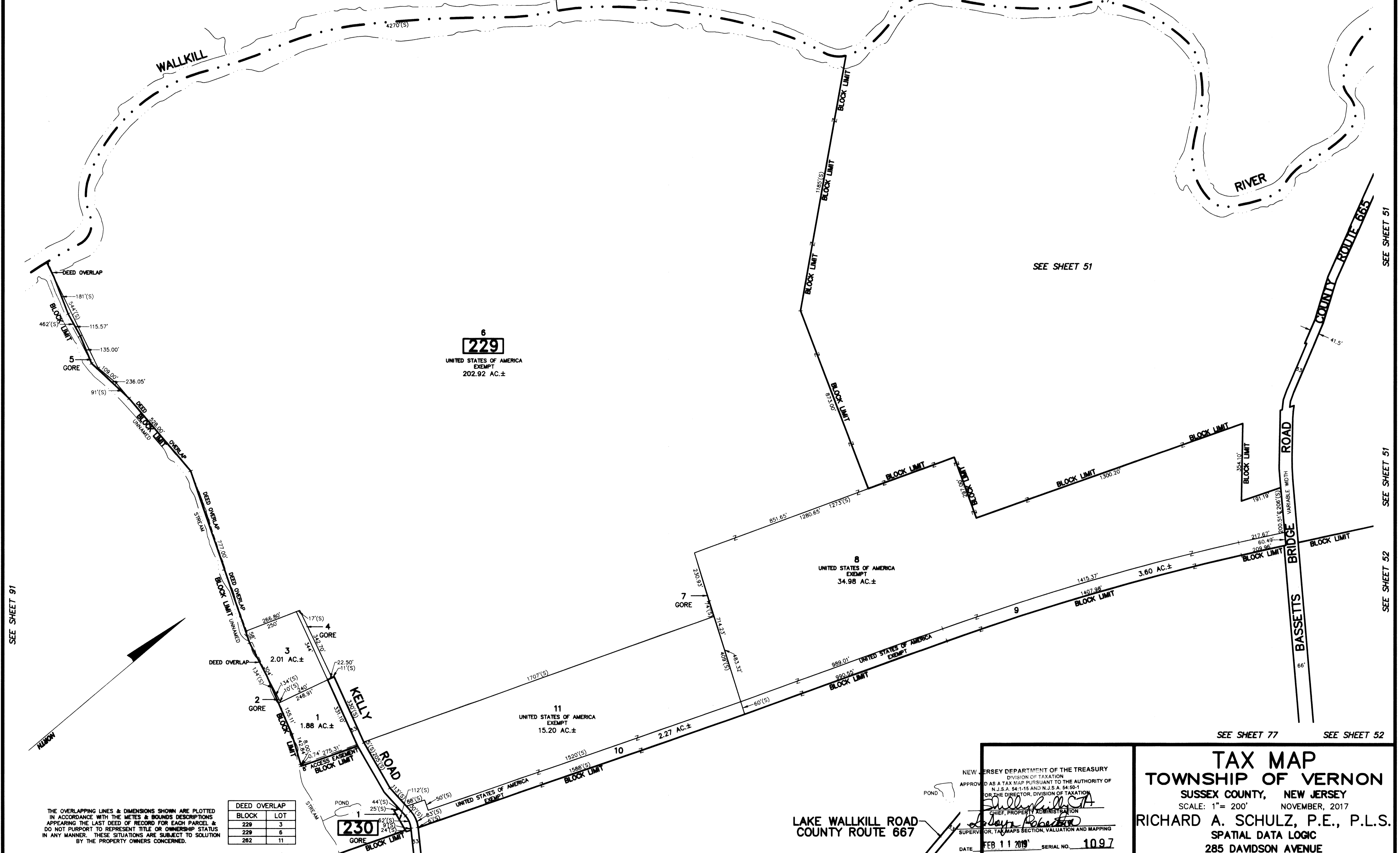


REVISIONS		
DATE	NAME	LIC. No.

TOWNSHIP OF
WANTAGE
SUSSEX COUNTY



SEE SHEET 91

SEE SHEET 51

SEE SHEET 51

SEE SHEET 52

SEE SHEET 77 SEE SHEET 52

THE OVERLAPPING LINES & DIMENSIONS SHOWN ARE PLOTTED IN ACCORDANCE WITH THE METES & BOUNDS DESCRIPTIONS APPEARING THE LAST DEED OF RECORD FOR EACH PARCEL & DO NOT PURPORT TO REPRESENT TITLE OR OWNERSHIP STATUS IN ANY MANNER. THESE SITUATIONS ARE SUBJECT TO SOLUTION BY THE PROPERTY OWNERS CONCERNED.

DEED OVERLAP	
BLOCK	LOT
229	3
229	6
262	11

This map has been drawn using Computer Aided Drafting/Design (CAD/D) and Coordinated Geometry (COGO).

SEE SHEET 91

SEE SHEET 77

SEE SHEET 77

LAKE WALLKILL ROAD
COUNTY ROUTE 667

NEW JERSEY DEPARTMENT OF THE TREASURY
DIVISION OF TAXATION
APPROVED AS A TAX MAP PURSUANT TO THE AUTHORITY OF
N.J.S.A. 54:1-15 AND N.J.S.A. 54:50-1
OR THE DIRECTOR, DIVISION OF TAXATION
Richard A. Schulz
CHIEF, PROPERTY ADMINISTRATION
SUPERVISOR, TAX MAPS SECTION, VALUATION AND MAPPING
DATE: FEB 11 2019 SERIAL NO. 10.97

TAX MAP
TOWNSHIP OF VERNON
SUSSEX COUNTY, NEW JERSEY
SCALE: 1" = 200' NOVEMBER, 2017
RICHARD A. SCHULZ, P.E., P.L.S.
SPATIAL DATA LOGIC
285 DAVIDSON AVENUE
SOMERSET, NEW JERSEY, 08873