

REVISIONS		
DATE	NAME	LIC. No.

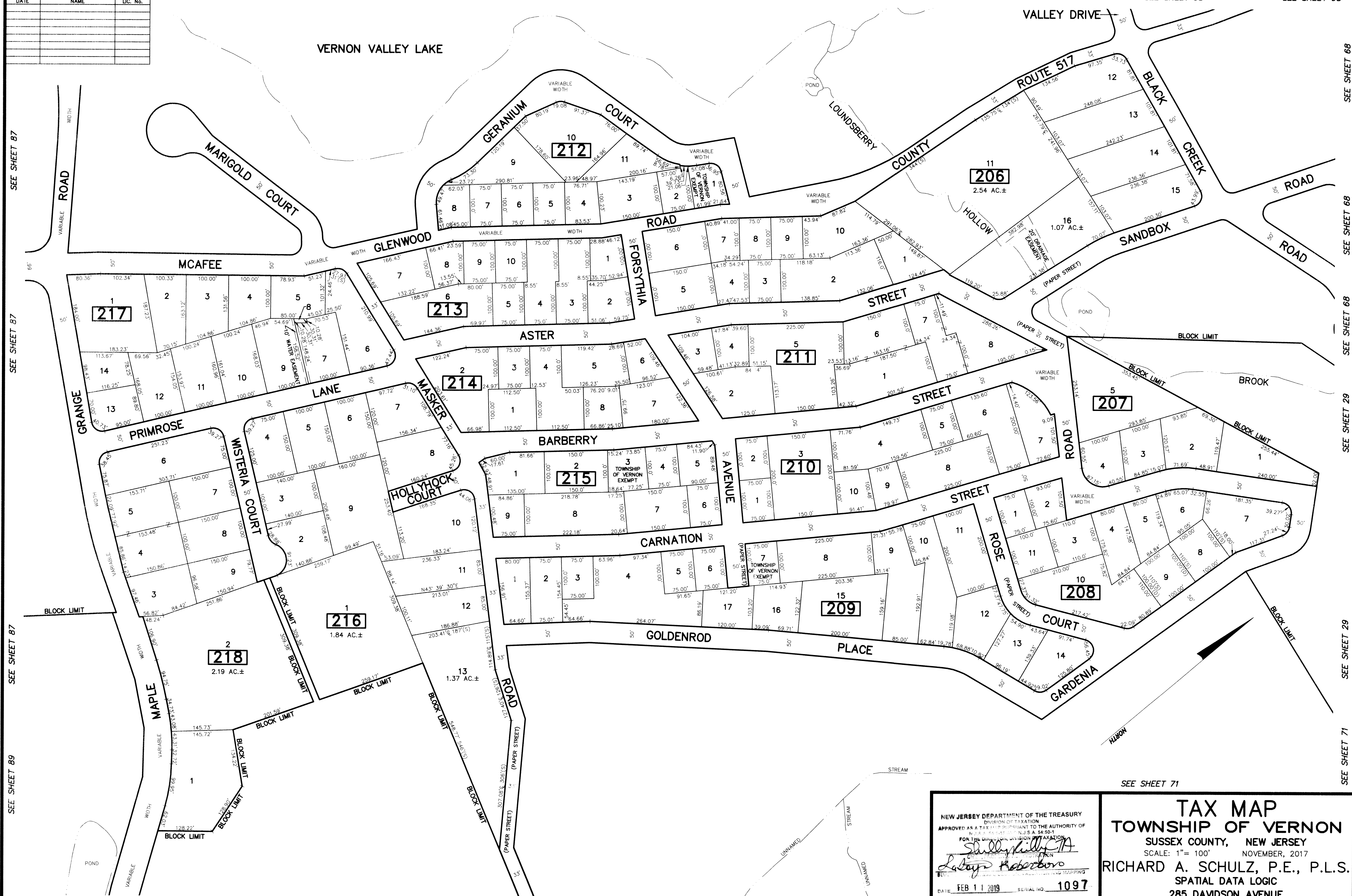
SEE SHEET 69

SEE SHEET 69

SEE SHEET 69

SEE SHEET 68

SEE SHEET 68



SEE SHEET 87

SEE SHEET 87

SEE SHEET 87

SEE SHEET 89

SEE SHEET 71

SEE SHEET 71

SEE SHEET 68

SEE SHEET 68

SEE SHEET 68

SEE SHEET 29

SEE SHEET 29

SEE SHEET 71

SEE SHEET 71

NEW JERSEY DEPARTMENT OF THE TREASURY
 DIVISION OF TAXATION
 APPROVED AS A TAX MAP PURSUANT TO THE AUTHORITY OF
 N.J.S.A. 54:5-10.1 AND N.J.S.A. 54:5-10.1
 FOR THE DIVISION OF TAXATION
Shelly Kelly
 COUNTY CLERK
Robert Roberts
 COUNTY ENGINEER
 DATE: FEB 11 2019 SERIAL NO. 1097

TAX MAP
TOWNSHIP OF VERNON
 SUSSEX COUNTY, NEW JERSEY
 SCALE: 1" = 100' NOVEMBER, 2017
RICHARD A. SCHULZ, P.E., P.L.S.
 SPATIAL DATA LOGIC
 285 DAVIDSON AVENUE
 SOMERSET, NEW JERSEY, 08873

This map has been drawn using Computer Aided Drafting/Design (CAD/D) and Coordinated Geometry (COGO).