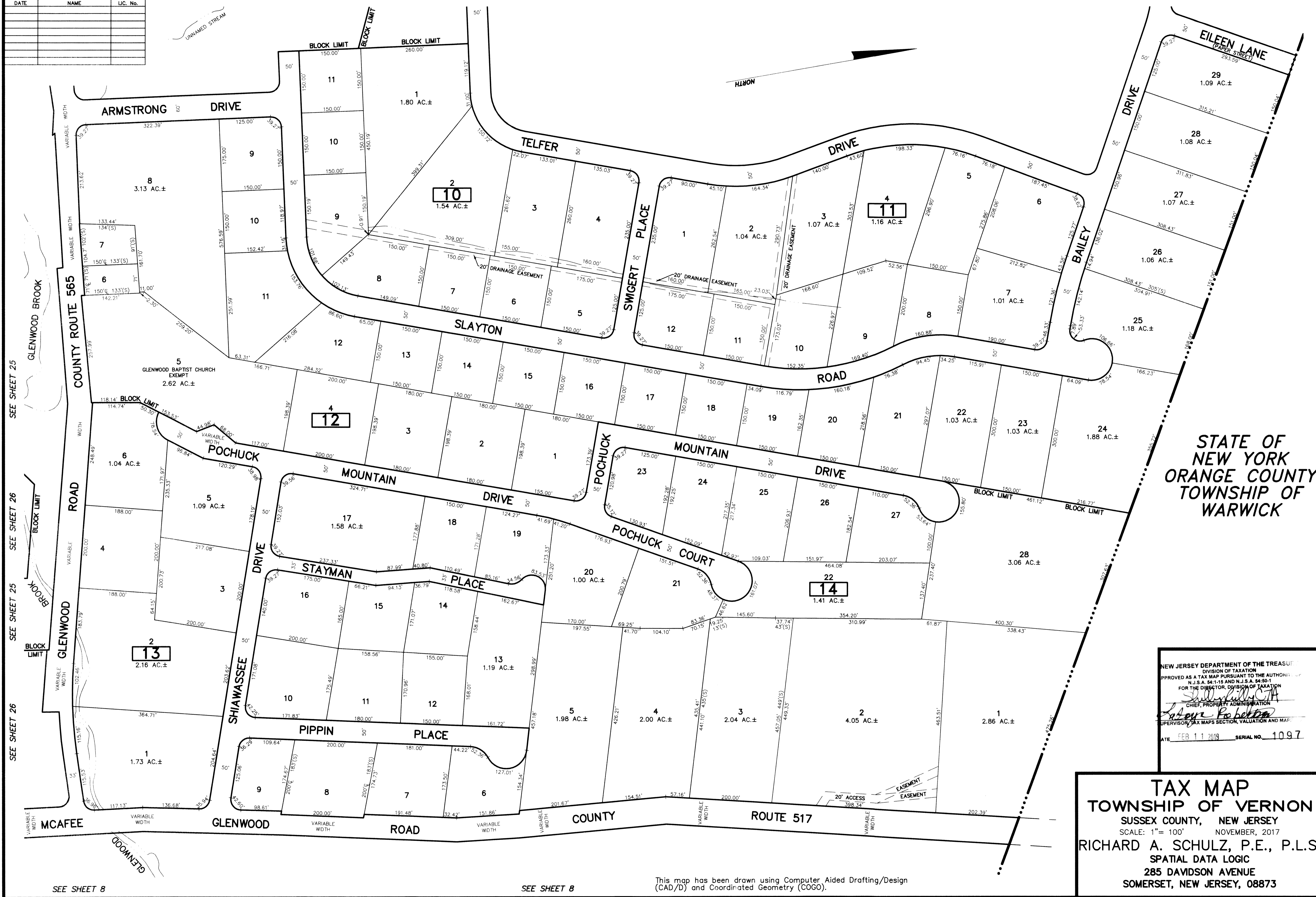


REVISIONS		
DATE	NAME	LIC. No.

SEE SHEET 25

SEE SHEET 6

SEE SHEET 6



STATE OF
NEW YORK
ORANGE COUNTY
TOWNSHIP OF
WARWICK

NEW JERSEY DEPARTMENT OF THE TREASURY
DIVISION OF TAXATION
APPROVED AS A TAX MAP PURSUANT TO THE AUTHORITY OF
N.J.S.A. 54:1-15 AND N.J.S.A. 54:50-1
FOR THE DIRECTOR, DIVISION OF TAXATION
[Signature]
CHIEF, PROPERTY ADMINISTRATION
[Signature]
SUPERVISOR, TAX MAPS SECTION, VALUATION AND MAPS
DATE FEB 11 2019 SERIAL NO. 1097

TAX MAP
TOWNSHIP OF VERNON
SUSSEX COUNTY, NEW JERSEY
SCALE: 1" = 100' NOVEMBER, 2017
RICHARD A. SCHULZ, P.E., P.L.S.
SPATIAL DATA LOGIC
285 DAVIDSON AVENUE
SOMERSET, NEW JERSEY, 08873

This map has been drawn using Computer Aided Drafting/Design (CAD/D) and Coordinated Geometry (COGO).

SEE SHEET 8

SEE SHEET 8