

REVISIONS		
DATE	NAME	LIC. No.

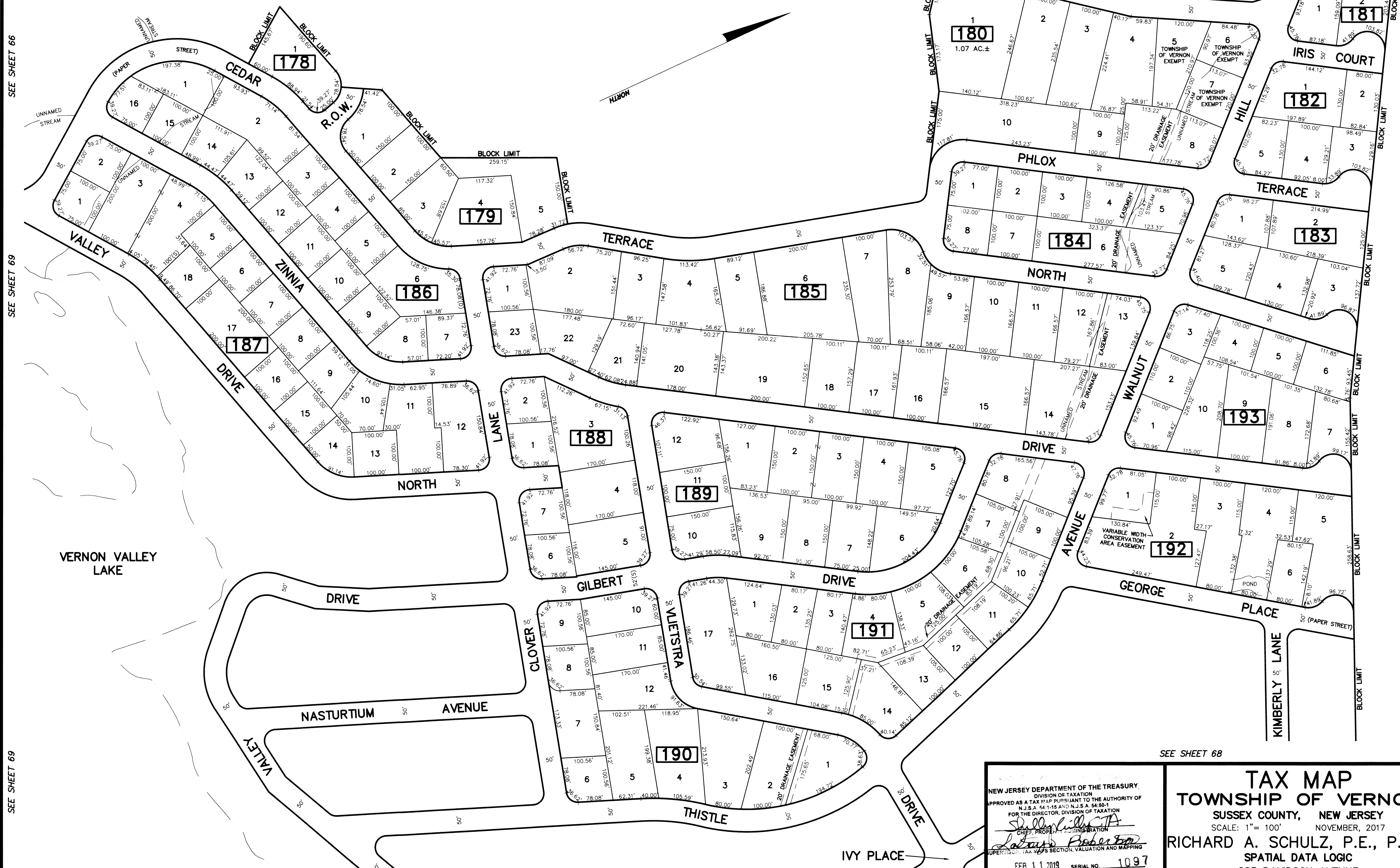
SEE SHEET 66

SEE SHEET 66

SEE SHEET 66

SEE SHEET 26

SEE SHEET 26



SEE SHEET 66

SEE SHEET 69

SEE SHEET 69

SEE SHEET 26

SEE SHEET 26

SEE SHEET 26

SEE SHEET 69

SEE SHEET 68

SEE SHEET 68

This map has been drawn using Computer Aided Drafting/Design (CAD/D) and Coordinated Geometry (COGO).

NEW JERSEY DEPARTMENT OF THE TREASURY  
 DIVISION OF TAXATION  
 APPROVED AS A TAX MAP PURSUANT TO THE AUTHORITY OF  
 N.J.S.A. 54:1-15 AND N.J.S.A. 54:16-1  
 FOR THE DIRECTOR, DIVISION OF TAXATION  
*Sharon L. ...*  
 CHIEF, PROPERTY ADMINISTRATION  
*Robert ...*  
 SUPERVISOR, TAX MAPS SECTION, VALUATION AND MAPPING  
 DATE FEB 11 2019 SERIAL NO. 1097

**TAX MAP**  
**TOWNSHIP OF VERNON**  
 SUSSEX COUNTY, NEW JERSEY  
 SCALE: 1" = 100' NOVEMBER, 2017  
**RICHARD A. SCHULZ, P.E., P.L.S.**  
 SPATIAL DATA LOGIC  
 285 DAVIDSON AVENUE  
 SOMERSET, NEW JERSEY, 08873