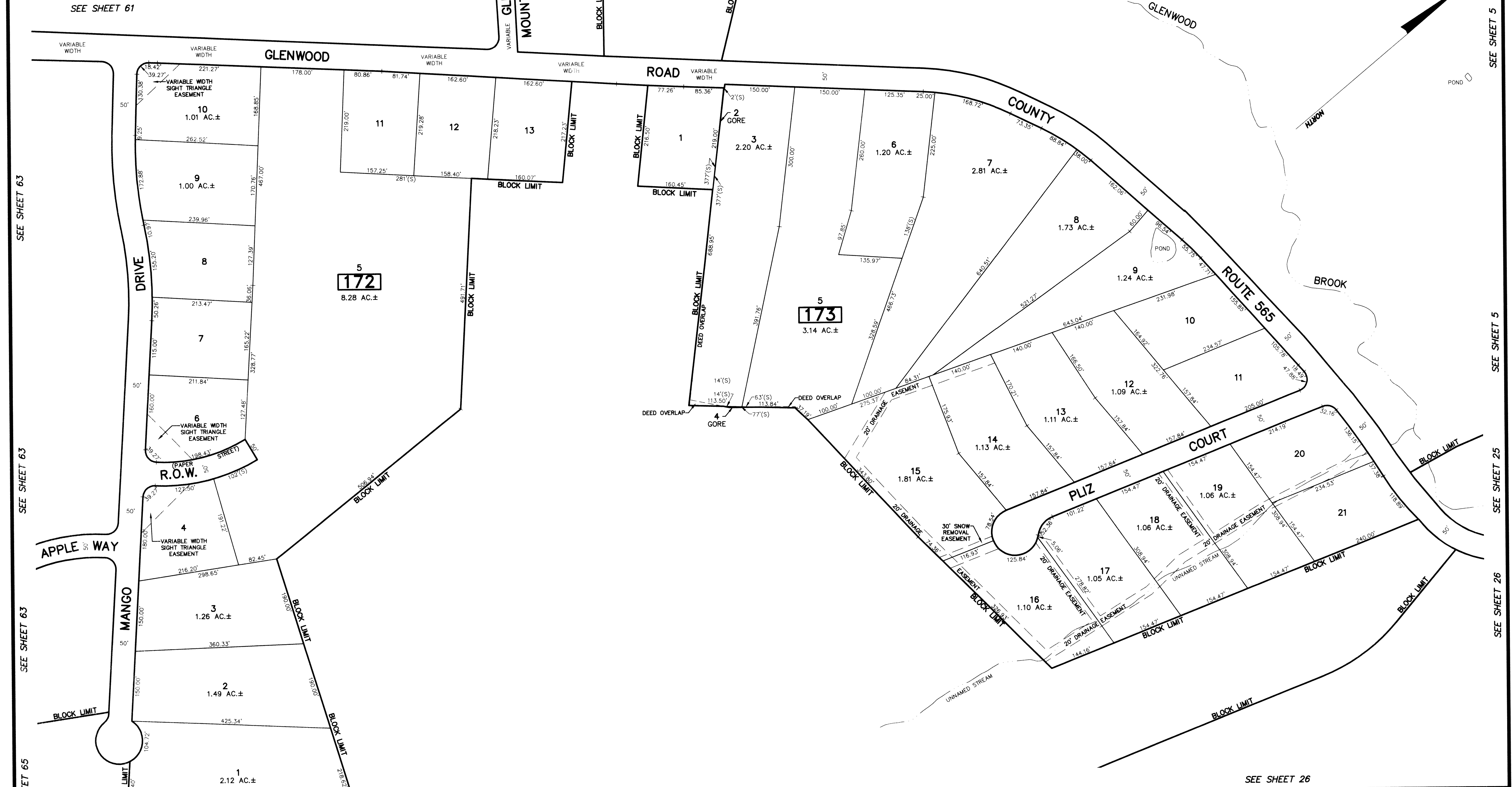


REVISIONS		
DATE	NAME	LIC. No.



THE OVERLAPPING LINES & DIMENSIONS SHOWN ARE PLOTTED IN ACCORDANCE WITH THE METES & BOUNDS DESCRIPTIONS APPEARING THE LAST DEED OF RECORD FOR EACH PARCEL & DO NOT PURPORT TO REPRESENT TITLE OR OWNERSHIP STATUS IN ANY MANNER. THESE SITUATIONS ARE SUBJECT TO SOLUTION BY THE PROPERTY OWNERS CONCERNED.

DEED OVERLAP	
BLOCK	LOT
173	3
173	5
174	2

SEE SHEET 65

This map has been drawn using Computer Aided Drafting/Design (CAD/D) and Coordinated Geometry (COGO).

SEE SHEET 65

SEE SHEET 26

NEW JERSEY DEPARTMENT OF THE TREASURY  
 DIVISION OF TAXATION  
 APPROVED AS A TAX MAP PURSUANT TO THE AUTHORITY OF  
 N.J.S.A. 54:1-16 AND N.J.S.A. 54:5-4  
 FOR THE DIRECTOR, DIVISION OF TAXATION  
*Robert A. Schulz*  
 CHIEF, PROPERTY ADMINISTRATION  
 SUPERVISOR, TAX MAPS SECTION, VALUATION AND MAPPING  
 DATE FEB 11 2018 SERIAL NO. 1097

**TAX MAP**  
**TOWNSHIP OF VERNON**  
 SUSSEX COUNTY, NEW JERSEY  
 SCALE: 1" = 100' NOVEMBER, 2017  
**RICHARD A. SCHULZ, P.E., P.L.S.**  
 SPATIAL DATA LOGIC  
 285 DAVIDSON AVENUE  
 SOMERSET, NEW JERSEY, 08873