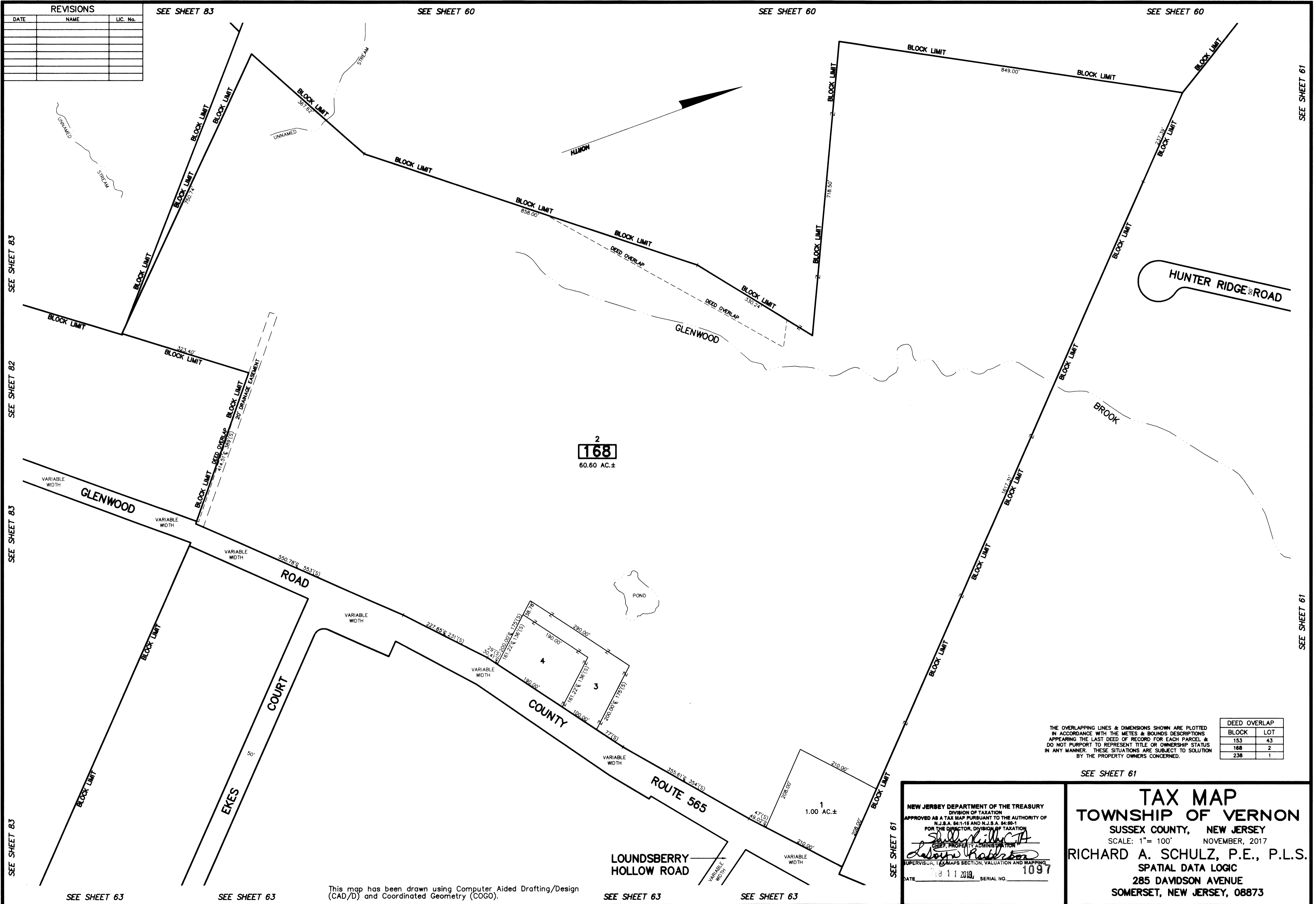


REVISIONS		
DATE	NAME	LIC. No.



2
168
60.60 AC.±

THE OVERLAPPING LINES & DIMENSIONS SHOWN ARE PLOTTED IN ACCORDANCE WITH THE METES & BOUNDS DESCRIPTIONS APPEARING THE LAST DEED OF RECORD FOR EACH PARCEL & DO NOT PURPORT TO REPRESENT TITLE OR OWNERSHIP STATUS IN ANY MANNER. THESE SITUATIONS ARE SUBJECT TO SOLUTION BY THE PROPERTY OWNERS CONCERNED.

DEED OVERLAP	
BLOCK	LOT
153	43
168	2
238	1

SEE SHEET 61

NEW JERSEY DEPARTMENT OF THE TREASURY
DIVISION OF TAXATION
APPROVED AS A TAX MAP PURSUANT TO THE AUTHORITY OF N.J.S.A. 54:1-6 AND N.J.S.A. 54:5-1
FOR THE DIRECTOR, DIVISION OF TAXATION
Shelley Hill
CHIEF, PROPERTY ADMINISTRATION
Joseph Rabbitt
SUPERVISOR, MAPS SECTION, VALUATION AND MAPPING
DATE: FEB 11 2019 SERIAL NO. 1097

TAX MAP
TOWNSHIP OF VERNON
SUSSEX COUNTY, NEW JERSEY
SCALE: 1" = 100' NOVEMBER, 2017
RICHARD A. SCHULZ, P.E., P.L.S.
SPATIAL DATA LOGIC
285 DAVIDSON AVENUE
SOMERSET, NEW JERSEY, 08873

This map has been drawn using Computer Aided Drafting/Design (CAD/D) and Coordinated Geometry (COGO).

SEE SHEET 83
SEE SHEET 82
SEE SHEET 83
SEE SHEET 83

SEE SHEET 63

SEE SHEET 63

SEE SHEET 63

SEE SHEET 63

SEE SHEET 61

SEE SHEET 61

SEE SHEET 61