

REVISIONS		
DATE	NAME	LIC. No.

SEE SHEET 24

SEE SHEET 24

SEE SHEET 24

SEE SHEET 5

SEE SHEET 24

SEE SHEET 60

SEE SHEET 60

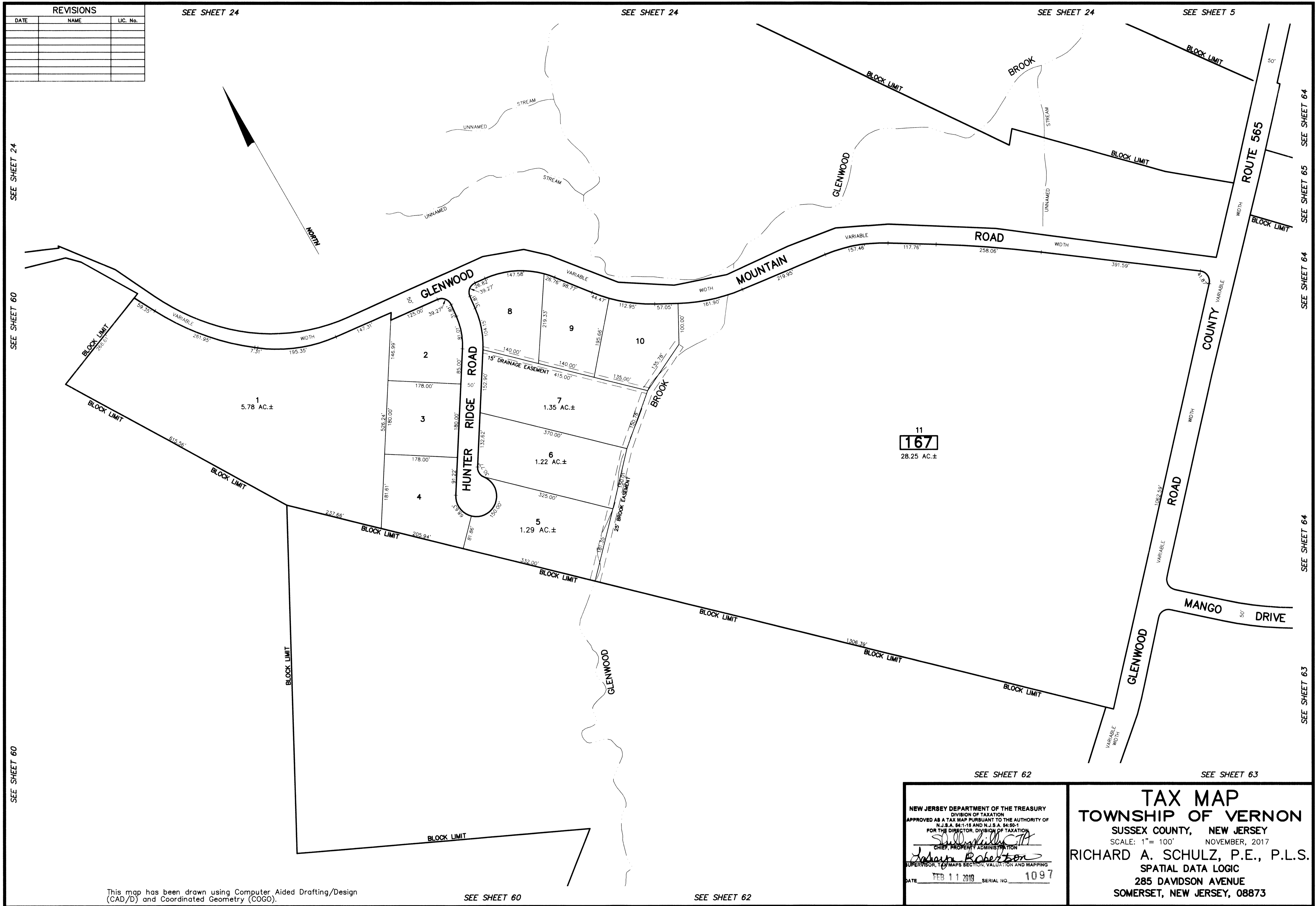
SEE SHEET 64

SEE SHEET 65

SEE SHEET 64

SEE SHEET 64

SEE SHEET 63



This map has been drawn using Computer Aided Drafting/Design (CAD/D) and Coordinated Geometry (COGO).

SEE SHEET 60

SEE SHEET 62

NEW JERSEY DEPARTMENT OF THE TREASURY  
 DIVISION OF TAXATION  
 APPROVED AS A TAX MAP PURSUANT TO THE AUTHORITY OF  
 N.J.S.A. 84:15 AND N.J.S.A. 84:50-1  
 FOR THE DIRECTOR, DIVISION OF TAXATION  
*[Signature]*  
 CHIEF, PROPERTY ADMINISTRATION  
*[Signature]*  
 SUPERVISOR, TAX MAPS SECTION, VALUATION AND MAPPING  
 DATE FEB 11 2019 SERIAL NO. 1097

**TAX MAP**  
**TOWNSHIP OF VERNON**  
 SUSSEX COUNTY, NEW JERSEY  
 SCALE: 1" = 100' NOVEMBER, 2017  
**RICHARD A. SCHULZ, P.E., P.L.S.**  
 SPATIAL DATA LOGIC  
 285 DAVIDSON AVENUE  
 SOMERSET, NEW JERSEY, 08873