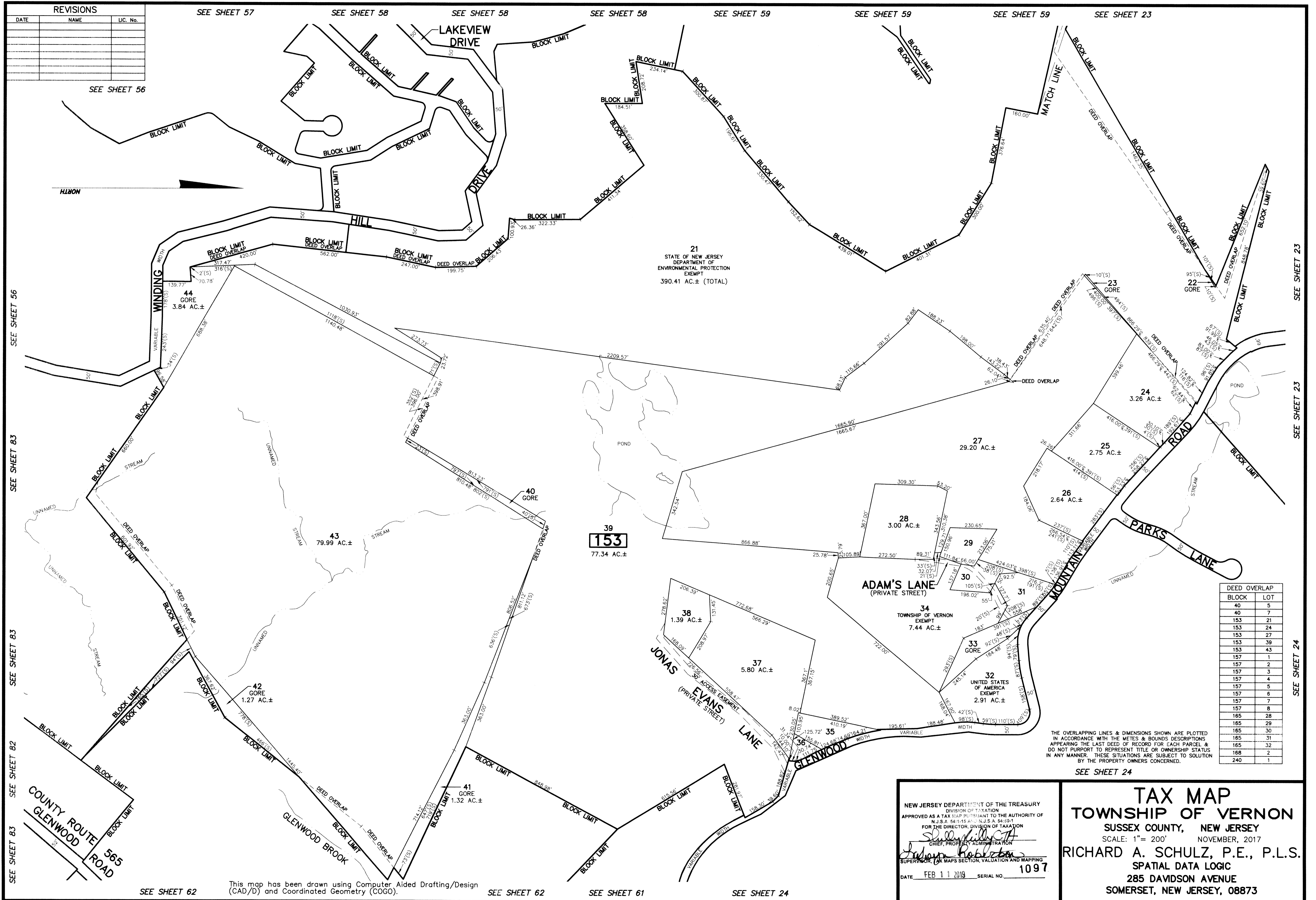


REVISIONS		
DATE	NAME	LIC. No.



21
STATE OF NEW JERSEY
DEPARTMENT OF
ENVIRONMENTAL PROTECTION
EXEMPT
390.41 AC.± (TOTAL)

39
153
77.34 AC.±

DEED OVERLAP	BLOCK	LOT
	40	5
	40	7
	153	21
	153	24
	153	27
	153	39
	153	43
	157	1
	157	2
	157	3
	157	4
	157	5
	157	6
	157	7
	157	8
	165	28
	165	29
	165	30
	165	31
	165	32
	168	2
	240	1

THE OVERLAPPING LINES & DIMENSIONS SHOWN ARE PLOTTED IN ACCORDANCE WITH THE METES & BOUNDS DESCRIPTIONS APPEARING IN THE LAST DEED OF RECORD FOR EACH PARCEL & DO NOT PURPORT TO REPRESENT TITLE OR OWNERSHIP STATUS IN ANY MANNER. THESE SITUATIONS ARE SUBJECT TO SOLUTION BY THE PROPERTY OWNERS CONCERNED.

SEE SHEET 24

NEW JERSEY DEPARTMENT OF THE TREASURY
DIVISION OF TAXATION
APPROVED AS A TAX MAP PURSUANT TO THE AUTHORITY OF
N.J.S.A. 54:15-84; N.J.S.A. 54:15-84.1
FOR THE DIRECTOR, DIVISION OF TAXATION
Shirley Hill
CHIEF, PROPERTY ADMINISTRATION
John Robert
SUPERVISOR, TAX MAPS SECTION, VALUATION AND MAPPING
DATE: FEB 11 2019 SERIAL NO. 1097

TAX MAP
TOWNSHIP OF VERNON
SUSSEX COUNTY, NEW JERSEY
SCALE: 1" = 200' NOVEMBER, 2017
RICHARD A. SCHULZ, P.E., P.L.S.
SPATIAL DATA LOGIC
285 DAVIDSON AVENUE
SOMERSET, NEW JERSEY, 08873

SEE SHEET 56
SEE SHEET 83
SEE SHEET 83
SEE SHEET 82
SEE SHEET 83

SEE SHEET 23
SEE SHEET 23
SEE SHEET 24

SEE SHEET 62

This map has been drawn using Computer Aided Drafting/Design (CAD/D) and Coordinated Geometry (COGO).

SEE SHEET 62

SEE SHEET 61

SEE SHEET 24