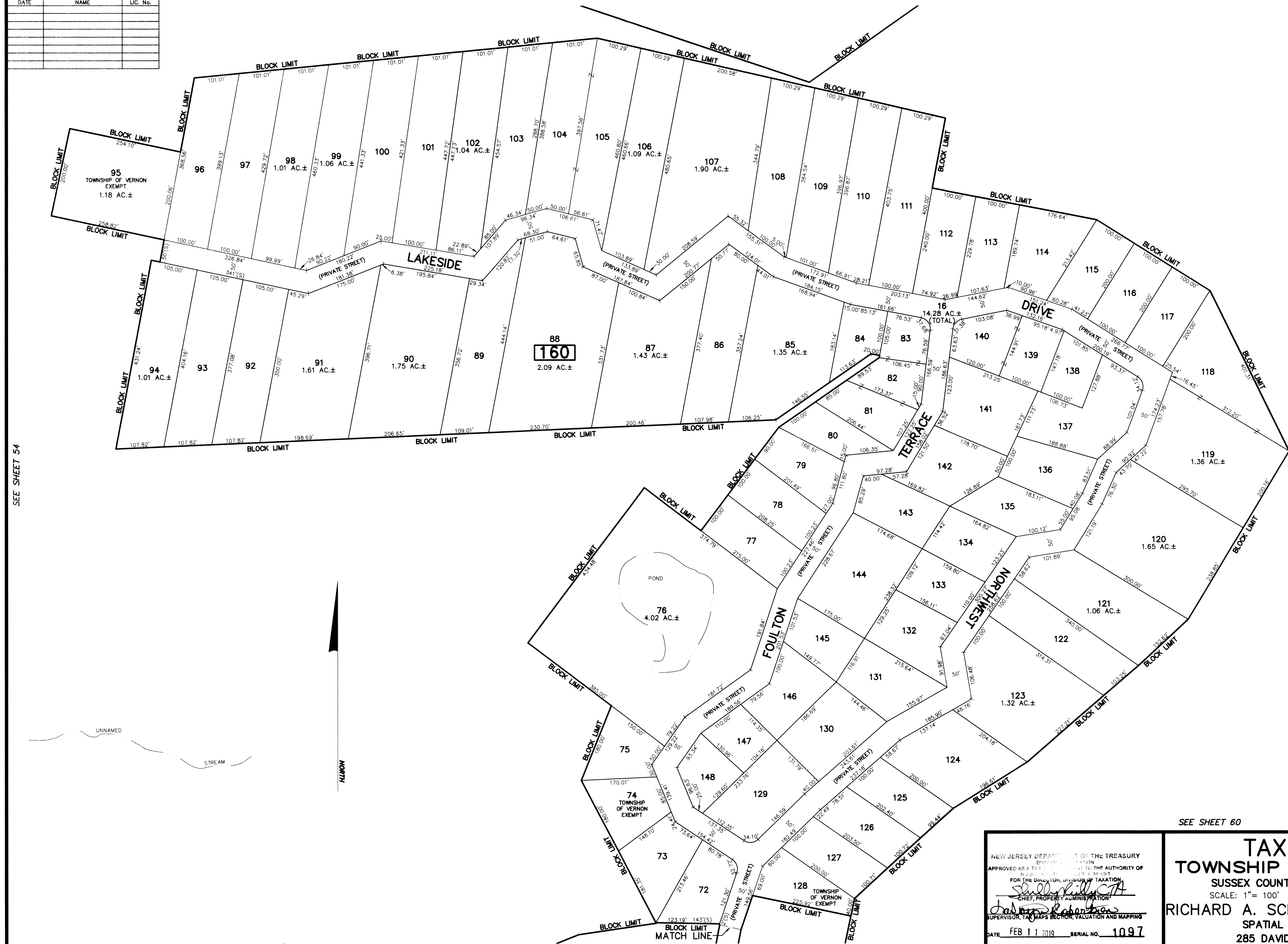


| REVISIONS | | |
|-----------|------|----------|
| DATE | NAME | LIC. No. |
| | | |
| | | |
| | | |
| | | |
| | | |
| | | |
| | | |
| | | |
| | | |

SEE SHEET 54

SEE SHEET 23

SEE SHEET 60



SEE SHEET 54

SEE SHEET 60

SEE SHEET 60

SEE SHEET 60

This map has been drawn using Computer Aided Drafting/Design (CAD/D) and Coordinated Geometry (COGO).

SEE SHEET 54

SEE SHEET 58

SEE SHEET 58

SEE SHEET 60

NEW JERSEY DEPARTMENT OF THE TREASURY
 DIVISION OF TAXATION
 APPROVED AS A TAX MAP BY THE AUTHORITY OF
 THE DIVISION OF TAXATION
 FOR THE DIVISION OF TAXATION
Sandra Kelly, CTA
 CHIEF, PROPERTY ADMINISTRATION
John Robertas
 SUPERVISOR, TAX MAPS SECTION, VALUATION AND MAPPING
 DATE FEB 11 2019 SERIAL NO. 1097

TAX MAP
TOWNSHIP OF VERNON
 SUSSEX COUNTY, NEW JERSEY
 SCALE: 1" = 100' NOVEMBER, 2017
RICHARD A. SCHULZ, P.E., P.L.S.
 SPATIAL DATA LOGIC
 285 DAVIDSON AVENUE
 SOMERSET, NEW JERSEY, 08873