

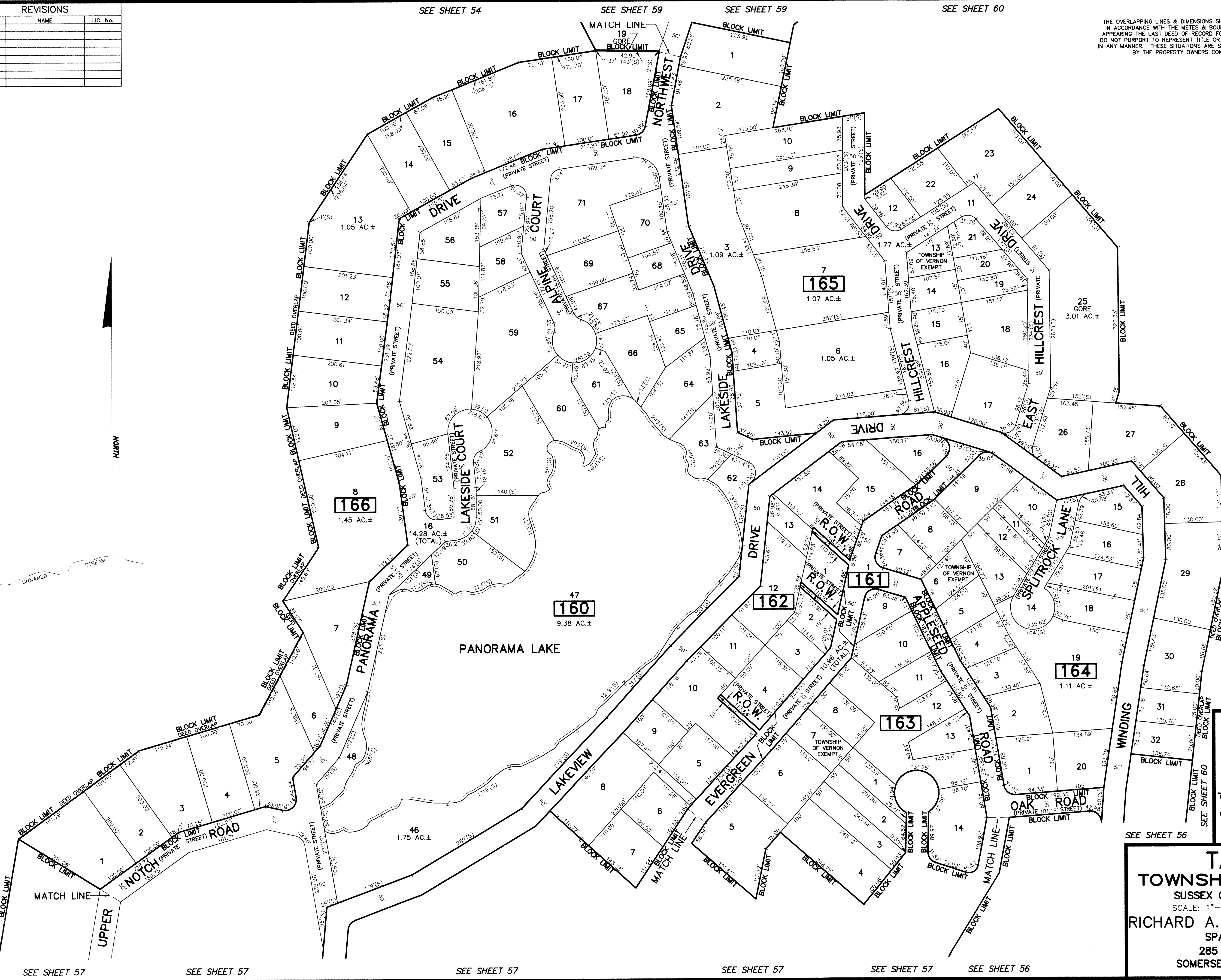
REVISIONS		
DATE	NAME	LIC. No.

SEE SHEET 54

SEE SHEET 54

SEE SHEET 54

SEE SHEET 54



THE OVERLAPPING LINES & DIMENSIONS SHOWN ARE PLOTTED IN ACCORDANCE WITH THE METES & BOUNDS DESCRIPTIONS APPEARING THE LAST DEED OF RECORD FOR EACH PARCEL & DO NOT PURPORT TO REPRESENT TITLE OR OWNERSHIP STATUS IN ANY MANNER. THESE SITUATIONS ARE SUBJECT TO SOLUTION BY THE PROPERTY OWNERS CONCERNED.

BLOCK	LOT
153	21
165	28
165	29
165	30
165	31
165	32
166	1
166	2
166	3
166	4
166	5
166	6
166	7
166	8
166	9
166	10
166	11
166	12
166	13

SEE SHEET 60

SEE SHEET 60

SEE SHEET 60

NEW JERSEY DEPARTMENT OF THE TREASURY
 DIVISION OF TAXATION
 APPROVED AS A TAX MAP PURSUANT TO THE AUTHORITY OF
 N.J.S.A. 54:1-18 AND N.J.S.A. 54:50-1
 FOR THE DIRECTOR, DIVISION OF TAXATION
[Signature]
 CHIEF, PROPERTY ADMINISTRATION
[Signature]
 SUPERVISOR, TAX MAPS SECTION, VALUATION AND MAPPING
 DATE FEB 11 2019 SERIAL NO. 1097

TAX MAP
TOWNSHIP OF VERNON
 SUSSEX COUNTY, NEW JERSEY
 SCALE: 1" = 100' NOVEMBER, 2017
RICHARD A. SCHULZ, P.E., P.L.S.
 SPATIAL DATA LOGIC
 285 DAVIDSON AVENUE
 SOMERSET, NEW JERSEY, 08873