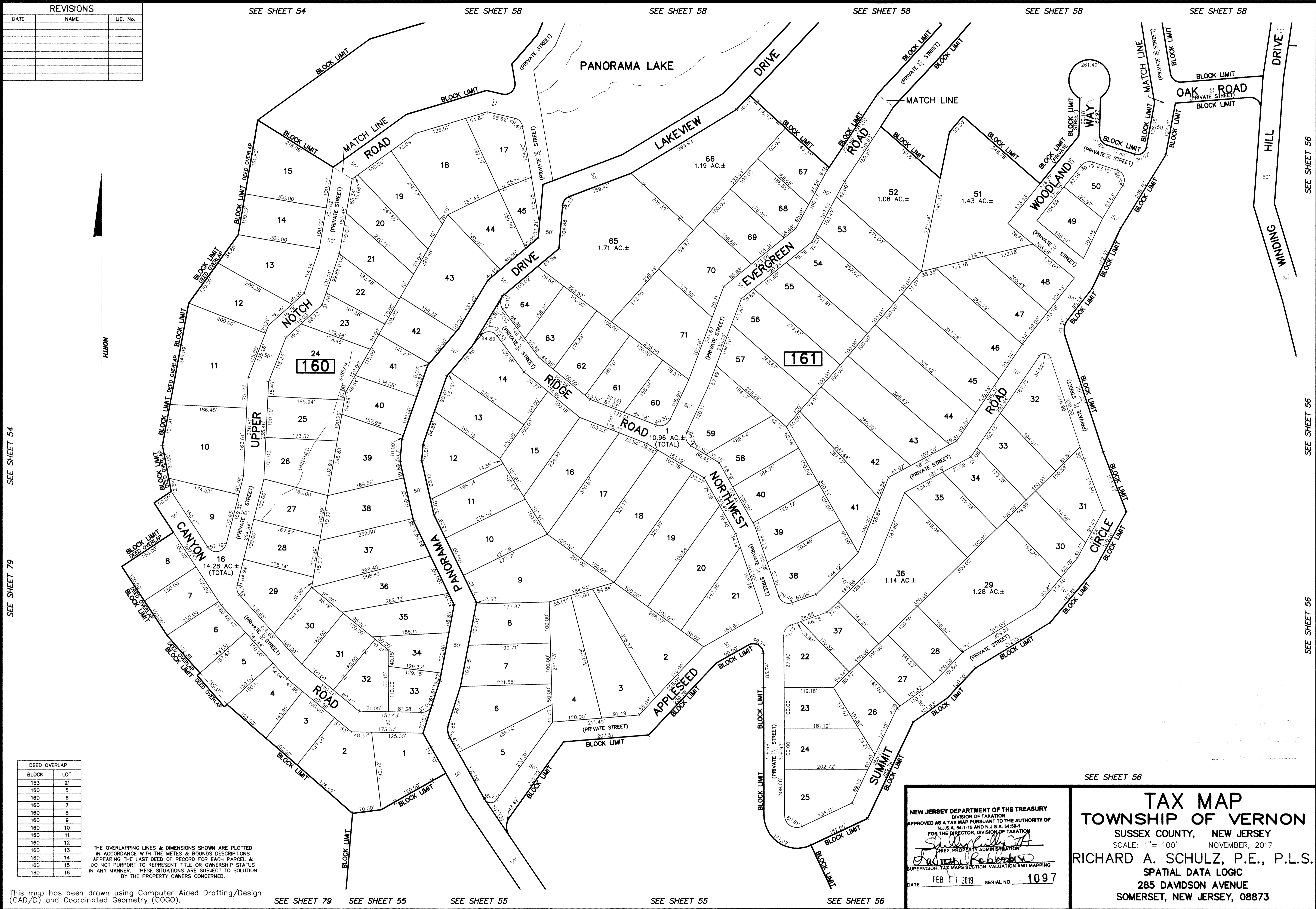


REVISIONS		
DATE	NAME	LIC. No.



SEE SHEET 54
SEE SHEET 79

SEE SHEET 56
SEE SHEET 56
SEE SHEET 56

DEED OVERLAP	
BLOCK	LOT
163	21
160	5
160	6
160	7
160	8
160	9
160	10
160	11
160	12
160	13
160	14
160	15
160	16

THE OVERLAPPING LINES & DIMENSIONS SHOWN ARE PLOTTED IN ACCORDANCE WITH THE METES & BOUNDS DESCRIPTIONS APPEARING IN THE LAST DEED OF RECORD FOR EACH PARCEL & DO NOT PURPORT TO REPRESENT TITLE OR OWNERSHIP STATUS IN ANY MANNER. THESE SITUATIONS ARE SUBJECT TO SOLUTION BY THE PROPERTY OWNERS CONCERNED.

This map has been drawn using Computer Aided Drafting/Design (CAD/D) and Coordinated Geometry (COGO).

SEE SHEET 79 SEE SHEET 55 SEE SHEET 55 SEE SHEET 55 SEE SHEET 56

NEW JERSEY DEPARTMENT OF THE TREASURY
DIVISION OF TAXATION
APPROVED AS A TAX MAP PURSUANT TO THE AUTHORITY OF
N.J.S.A. 54:1-16 AND N.J.S.A. 54:50-1
FOR THE DIRECTOR, DIVISION OF TAXATION
Shirley A. [Signature]
CHIEF, PROPERTY ADMINISTRATION
Robert [Signature]
SUPERVISOR, TAX MAPS SECTION, VALUATION AND MAPPING
DATE FEB 11 2019 SERIAL NO. 1097

SEE SHEET 56

TAX MAP

TOWNSHIP OF VERNON

SUSSEX COUNTY, NEW JERSEY
SCALE: 1" = 100' NOVEMBER, 2017

RICHARD A. SCHULZ, P.E., P.L.S.
SPATIAL DATA LOGIC
285 DAVIDSON AVENUE
SOMERSET, NEW JERSEY, 08873