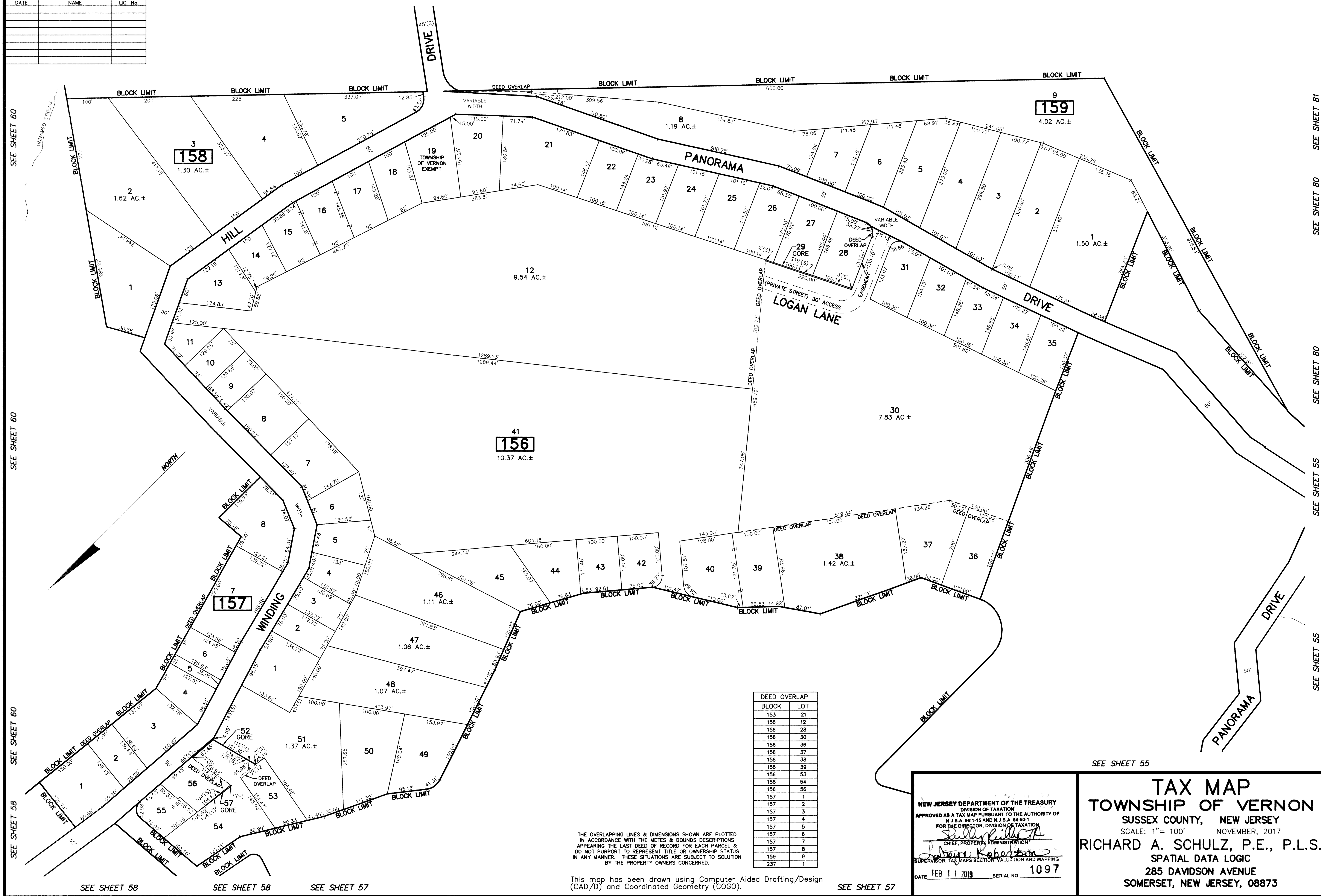


REVISIONS		
DATE	NAME	LIC. No.

SEE SHEET 83

SEE SHEET 81

SEE SHEET 81



SEE SHEET 60

SEE SHEET 60

SEE SHEET 60

SEE SHEET 58

SEE SHEET 58

SEE SHEET 58

SEE SHEET 57

SEE SHEET 81

SEE SHEET 80

SEE SHEET 80

SEE SHEET 55

SEE SHEET 55

SEE SHEET 55

DEED	LOT
153	21
156	12
158	28
156	30
156	36
156	37
156	38
156	39
156	53
156	54
156	56
157	1
157	2
157	3
157	4
157	5
157	6
157	7
157	8
159	9
237	1

THE OVERLAPPING LINES & DIMENSIONS SHOWN ARE PLOTTED IN ACCORDANCE WITH THE METES & BOUNDS DESCRIPTIONS APPEARING THE LAST DEED OF RECORD FOR EACH PARCEL & DO NOT PURPORT TO REPRESENT TITLE OR OWNERSHIP STATUS IN ANY MANNER. THESE SITUATIONS ARE SUBJECT TO SOLUTION BY THE PROPERTY OWNERS CONCERNED.

This map has been drawn using Computer Aided Drafting/Design (CAD/D) and Coordinated Geometry (COGO).

SEE SHEET 57

NEW JERSEY DEPARTMENT OF THE TREASURY
 DIVISION OF TAXATION
 APPROVED AS A TAX MAP PURSUANT TO THE AUTHORITY OF
 N.J.S.A. 54:1-15 AND N.J.S.A. 54:50-1
 FOR THE DIRECTOR, DIVISION OF TAXATION
[Signature]
 CHIEF, PROPERTY ADMINISTRATION
[Signature]
 SUPERVISOR, TAX MAPS SECTION, VALUATION AND MAPPING
 DATE: FEB 11 2019 SERIAL NO. 1097

TAX MAP
TOWNSHIP OF VERNON
 SUSSEX COUNTY, NEW JERSEY
 SCALE: 1" = 100' NOVEMBER, 2017
RICHARD A. SCHULZ, P.E., P.L.S.
 SPATIAL DATA LOGIC
 285 DAVIDSON AVENUE
 SOMERSET, NEW JERSEY, 08873