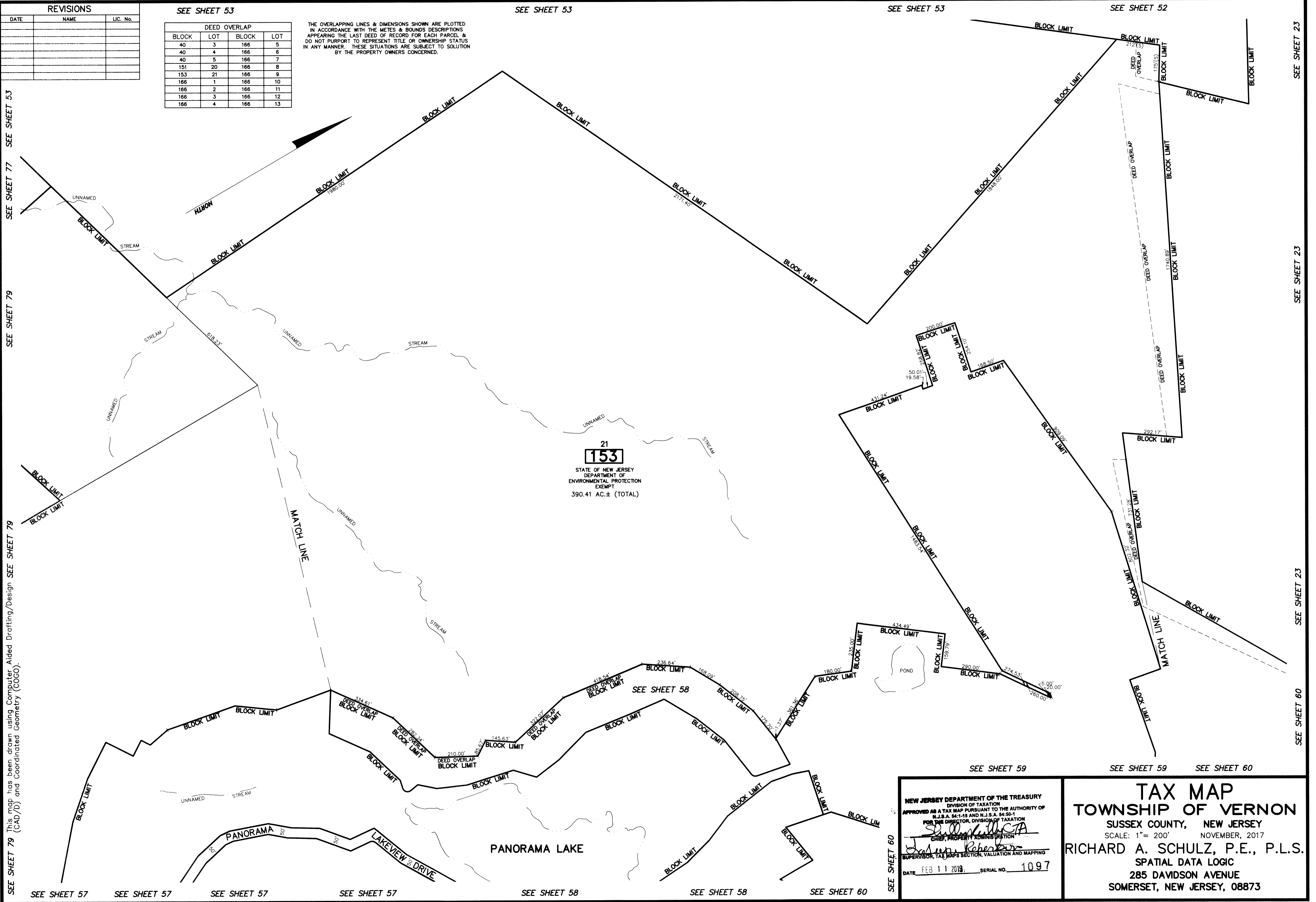


REVISIONS		
DATE	NAME	LIC. No.

SEE SHEET 53

DEED OVERLAP			
BLOCK	LOT	BLOCK	LOT
40	3	166	5
40	4	166	6
40	5	166	7
151	20	166	8
153	21	166	9
166	1	166	10
166	2	166	11
166	3	166	12
166	4	166	13

THE OVERLAPPING LINES & DIMENSIONS SHOWN ARE PLOTTED IN ACCORDANCE WITH THE METES & BOUNDS DESCRIPTIONS APPEARING THE LAST DEED OF RECORD FOR EACH PARCEL & DO NOT PURPORT TO REPRESENT TITLE OR OWNERSHIP STATUS IN ANY MANNER. THESE SITUATIONS ARE SUBJECT TO SOLUTION BY THE PROPERTY OWNERS CONCERNED.



SEE SHEET 79 This map has been drawn using Computer Aided Drafting/Design (CAD/D) and Coordinated Geometry (COCO). SEE SHEET 79

SEE SHEET 23, SEE SHEET 23, SEE SHEET 23, SEE SHEET 60

NEW JERSEY DEPARTMENT OF THE TREASURY
DIVISION OF TAXATION
APPROVED AS A TAX MAP PURSUANT TO THE AUTHORITY OF
N.J.S.A. 54:1-15 AND N.J.S.A. 54:50-1
FOR THE DIRECTOR, DIVISION OF TAXATION
S. D. [Signature]
CHIEF, PROPERTY ADMINISTRATION
SUPERVISOR, TAX MAPS SECTION, VALUATION AND MAPPING
DATE FEB 11 2019 SERIAL NO. 1097

SEE SHEET 59 SEE SHEET 59 SEE SHEET 60

TAX MAP

TOWNSHIP OF VERNON

SUSSEX COUNTY, NEW JERSEY
SCALE: 1" = 200' NOVEMBER, 2017

RICHARD A. SCHULZ, P.E., P.L.S.
SPATIAL DATA LOGIC
285 DAVIDSON AVENUE
SOMERSET, NEW JERSEY, 08873