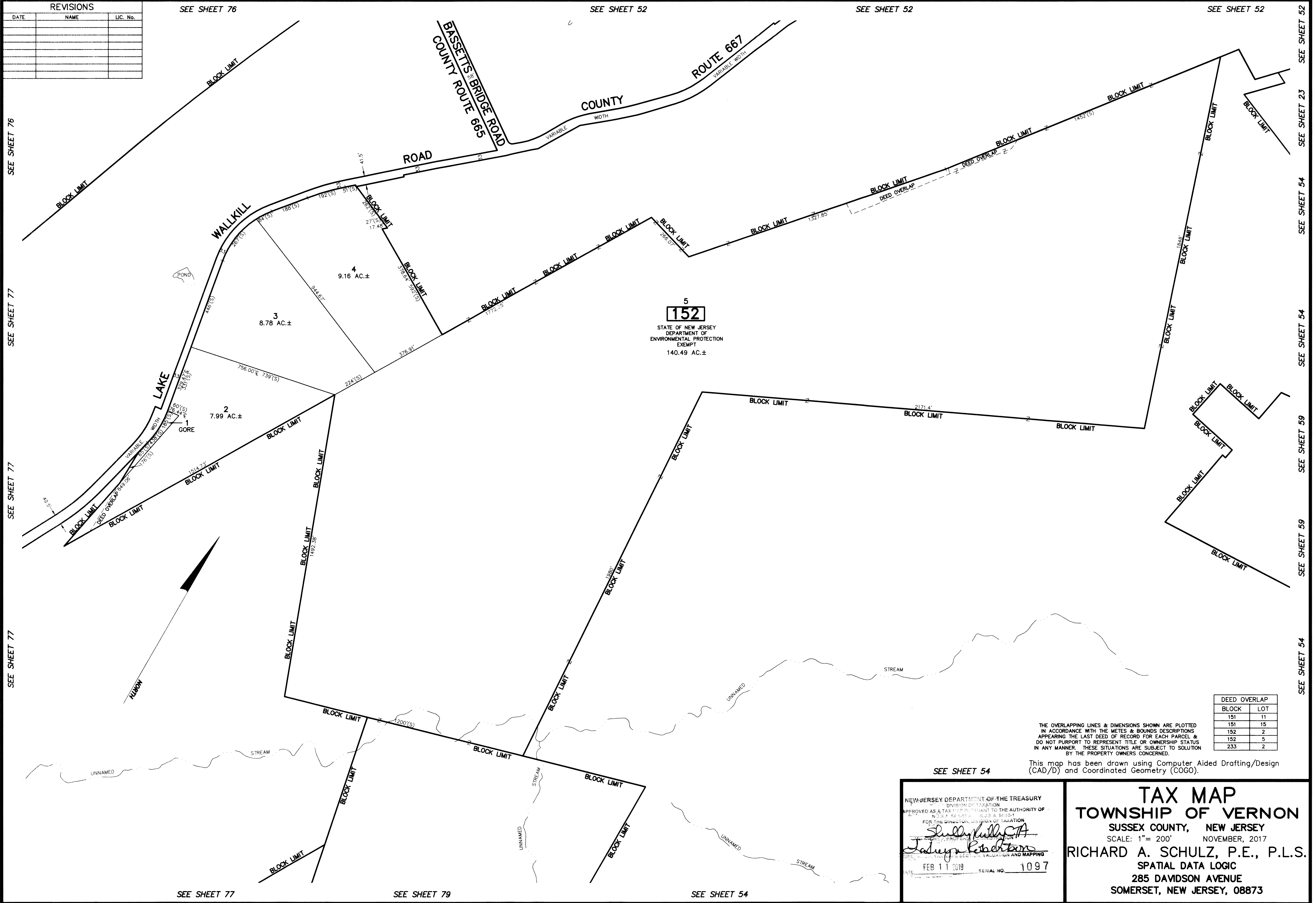


REVISIONS		
DATE	NAME	LIC. No.



152
 STATE OF NEW JERSEY
 DEPARTMENT OF
 ENVIRONMENTAL PROTECTION
 EXEMPT
 140.49 AC.±

DEED OVERLAP	
BLOCK	LOT
151	11
151	15
152	2
152	5
233	2

THE OVERLAPPING LINES & DIMENSIONS SHOWN ARE PLOTTED IN ACCORDANCE WITH THE METES & BOUNDS DESCRIPTIONS APPEARING THE LAST DEED OF RECORD FOR EACH PARCEL & DO NOT PURPORT TO REPRESENT TITLE OR OWNERSHIP STATUS IN ANY MANNER. THESE SITUATIONS ARE SUBJECT TO SOLUTION BY THE PROPERTY OWNERS CONCERNED.

This map has been drawn using Computer Aided Drafting/Design (CAD/D) and Coordinated Geometry (COGO).

SEE SHEET 54

NEW JERSEY DEPARTMENT OF THE TREASURY
 DIVISION OF TAXATION
 APPROVED AS A TAX MAP PRESENTED TO THE AUTHORITY OF THE STATE OF NEW JERSEY
 FOR THE DIRECTOR, DIVISION OF TAXATION
Shelly Kelly, CA
Jalyn Robertson
 SUPERVISOR, TAX MAPS SECTION, VALUATION AND MAPPING
 DATE: FEB 11 2019 SERIAL NO. 1097

TAX MAP
TOWNSHIP OF VERNON
 SUSSEX COUNTY, NEW JERSEY
 SCALE: 1" = 200' NOVEMBER, 2017
RICHARD A. SCHULZ, P.E., P.L.S.
 SPATIAL DATA LOGIC
 285 DAVIDSON AVENUE
 SOMERSET, NEW JERSEY, 08873

SEE SHEET 76 SEE SHEET 77 SEE SHEET 77 SEE SHEET 77 SEE SHEET 76
 SEE SHEET 52 SEE SHEET 52 SEE SHEET 52
 SEE SHEET 23 SEE SHEET 54 SEE SHEET 54 SEE SHEET 59 SEE SHEET 59 SEE SHEET 54
 SEE SHEET 79 SEE SHEET 54