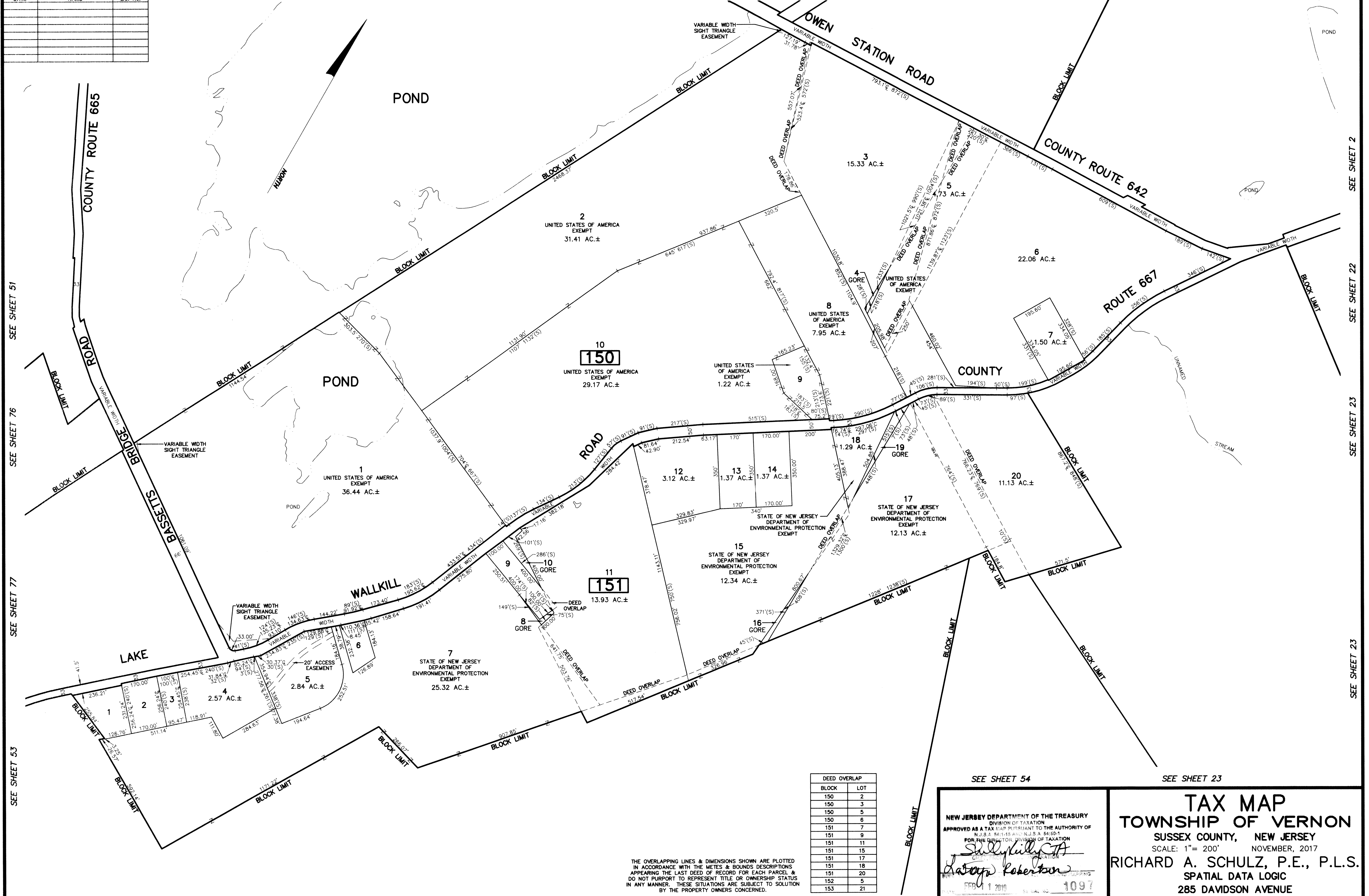


REVISIONS		
DATE	NAME	LIC. No.

SEE SHEET 51 SEE SHEET 51 SEE SHEET 21 SEE SHEET 21 SEE SHEET 2



SEE SHEET 51
SEE SHEET 76
SEE SHEET 77
SEE SHEET 53

SEE SHEET 2
SEE SHEET 22
SEE SHEET 23
SEE SHEET 23

This map has been drawn using Computer Aided Drafting/Design (CAD/D) and Coordinated Geometry (COGO).

SEE SHEET 53

SEE SHEET 53

THE OVERLAPPING LINES & DIMENSIONS SHOWN ARE PLOTTED IN ACCORDANCE WITH THE METES & BOUNDS DESCRIPTIONS APPEARING ON THE LAST DEED OF RECORD FOR EACH PARCEL & DO NOT PURPORT TO REPRESENT TITLE OR OWNERSHIP STATUS IN ANY MANNER. THESE SITUATIONS ARE SUBJECT TO SOLUTION BY THE PROPERTY OWNERS CONCERNED.

BLOCK	LOT
150	2
150	3
150	5
150	6
151	7
151	9
151	11
151	15
151	17
151	18
151	20
152	5
153	21

NEW JERSEY DEPARTMENT OF THE TREASURY
DIVISION OF TAXATION
APPROVED AS A TAX MAP PURSUANT TO THE AUTHORITY OF
N.J.S.A. 54:1-15 AND N.J.S.A. 54:5-1
FOR THE DIRECTOR, DIVISION OF TAXATION
Sally Kelly, CTA
COMMISSIONER
Robertson
FEB 11 2018

SEE SHEET 54 SEE SHEET 23

TAX MAP

TOWNSHIP OF VERNON

SUSSEX COUNTY, NEW JERSEY
SCALE: 1" = 200' NOVEMBER, 2017
RICHARD A. SCHULZ, P.E., P.L.S.
SPATIAL DATA LOGIC
285 DAVIDSON AVENUE
SOMERSET, NEW JERSEY, 08873