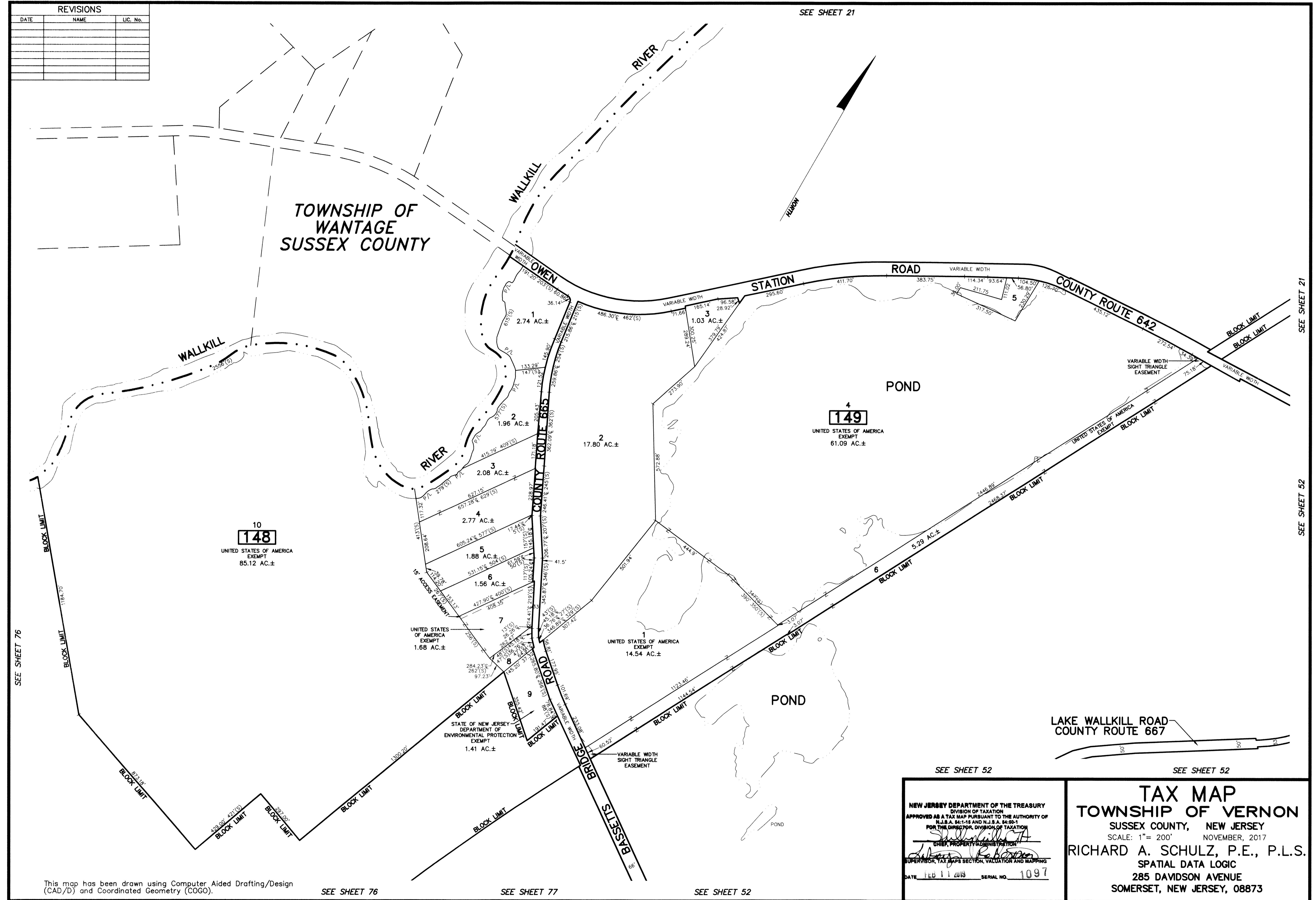


REVISIONS		
DATE	NAME	LIC. No.

SEE SHEET 21

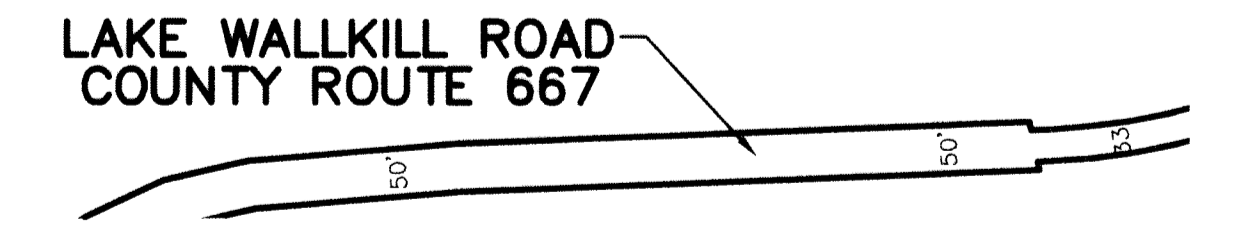
### TOWNSHIP OF WANTAGE SUSSEX COUNTY



SEE SHEET 76

SEE SHEET 21

SEE SHEET 52



SEE SHEET 52

SEE SHEET 52

NEW JERSEY DEPARTMENT OF THE TREASURY  
DIVISION OF TAXATION  
APPROVED AS A TAX MAP PURSUANT TO THE AUTHORITY OF  
N.J.S.A. 54:11-15 AND N.J.S.A. 54:90-1  
FOR THE DIRECTOR, DIVISION OF TAXATION  
*Richard A. Schulz*  
CHIEF, PROPERTY ADMINISTRATION  
*Richard A. Schulz*  
SUPERVISOR, TAX MAPS SECTION, VALUATION AND MAPPING  
DATE FEB 11 2018 SERIAL NO. 1097

**TAX MAP**  
**TOWNSHIP OF VERNON**  
SUSSEX COUNTY, NEW JERSEY  
SCALE: 1"= 200' NOVEMBER, 2017  
**RICHARD A. SCHULZ, P.E., P.L.S.**  
SPATIAL DATA LOGIC  
285 DAVIDSON AVENUE  
SOMERSET, NEW JERSEY, 08873

This map has been drawn using Computer Aided Drafting/Design (CAD/D) and Coordinated Geometry (COGO).

SEE SHEET 76

SEE SHEET 77

SEE SHEET 52