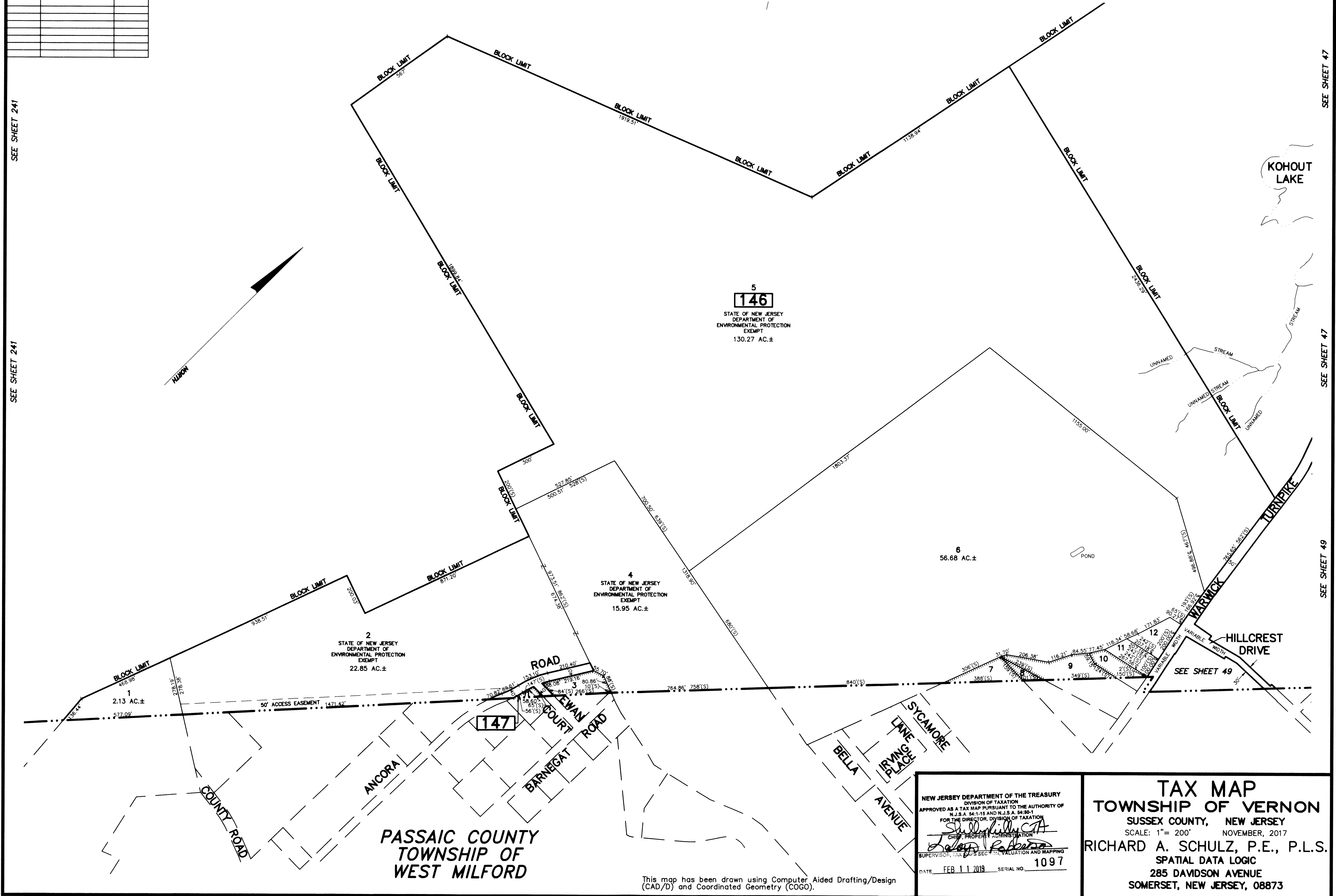


REVISIONS		
DATE	NAME	LIC. No.

SEE SHEET 241      SEE SHEET 46      SEE SHEET 47



SEE SHEET 241

SEE SHEET 47

SEE SHEET 47

SEE SHEET 49

**PASSAIC COUNTY  
TOWNSHIP OF  
WEST MILFORD**

This map has been drawn using Computer Aided Drafting/Design (CAD/D) and Coordinated Geometry (COGO).

NEW JERSEY DEPARTMENT OF THE TREASURY  
DIVISION OF TAXATION  
APPROVED AS A TAX MAP PURSUANT TO THE AUTHORITY OF  
N.J.S.A. 54:1-15 AND N.J.S.A. 54:50-1  
FOR THE DIRECTOR, DIVISION OF TAXATION  
*Richard A. Schulz*  
CHIEF, PROPERTY ADMINISTRATION  
*Richard A. Schulz*  
SUPERVISOR, TAX MAPS SECTION, VALUATION AND MAPPING  
DATE FEB 11 2019 SERIAL NO. 1097

**TAX MAP  
TOWNSHIP OF VERNON**  
SUSSEX COUNTY, NEW JERSEY  
SCALE: 1" = 200' NOVEMBER, 2017  
RICHARD A. SCHULZ, P.E., P.L.S.  
SPATIAL DATA LOGIC  
285 DAVIDSON AVENUE  
SOMERSET, NEW JERSEY, 08873