

REVISIONS		
DATE	NAME	LIC. No.

SEE SHEET 47

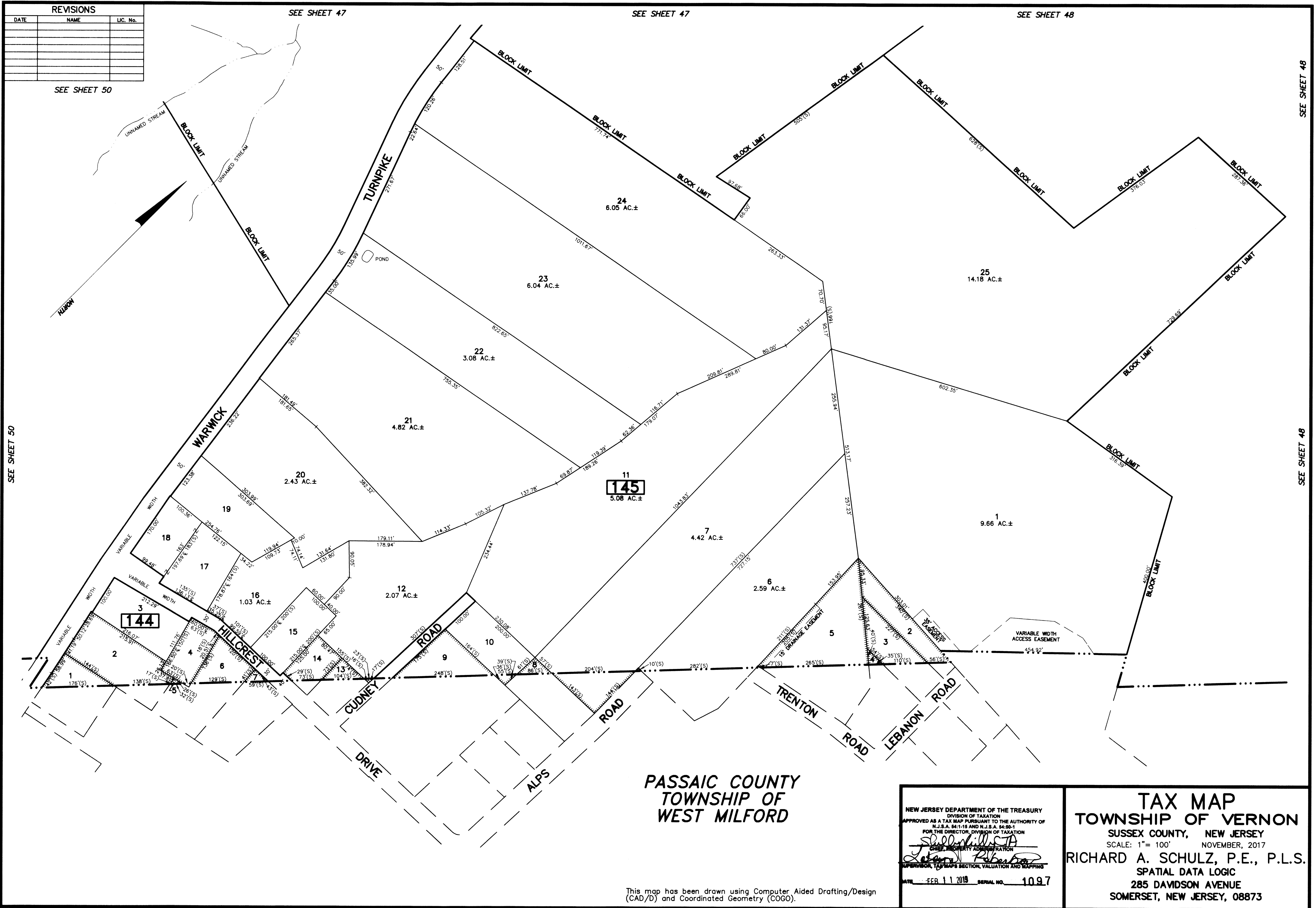
SEE SHEET 47

SEE SHEET 48

SEE SHEET 50

SEE SHEET 48

SEE SHEET 48



**PASSAIC COUNTY
TOWNSHIP OF
WEST MILFORD**

NEW JERSEY DEPARTMENT OF THE TREASURY
DIVISION OF TAXATION
APPROVED AS A TAX MAP PURSUANT TO THE AUTHORITY OF
N.J.S.A. 54:1-15 AND N.J.S.A. 54:80-1
FOR THE DIRECTOR, DIVISION OF TAXATION
Richard A. Schulz, P.E., P.L.S.
CHIEF, PROPERTY ADMINISTRATION
SUPERVISOR, TAX MAPS SECTION, VALUATION AND MAPPING
DATE: FEB 11 2019 SERIAL NO. 1097

**TAX MAP
TOWNSHIP OF VERNON**
SUSSEX COUNTY, NEW JERSEY
SCALE: 1" = 100' NOVEMBER, 2017
RICHARD A. SCHULZ, P.E., P.L.S.
SPATIAL DATA LOGIC
285 DAVIDSON AVENUE
SOMERSET, NEW JERSEY, 08873

This map has been drawn using Computer Aided Drafting/Design (CAD/D) and Coordinated Geometry (COGO).