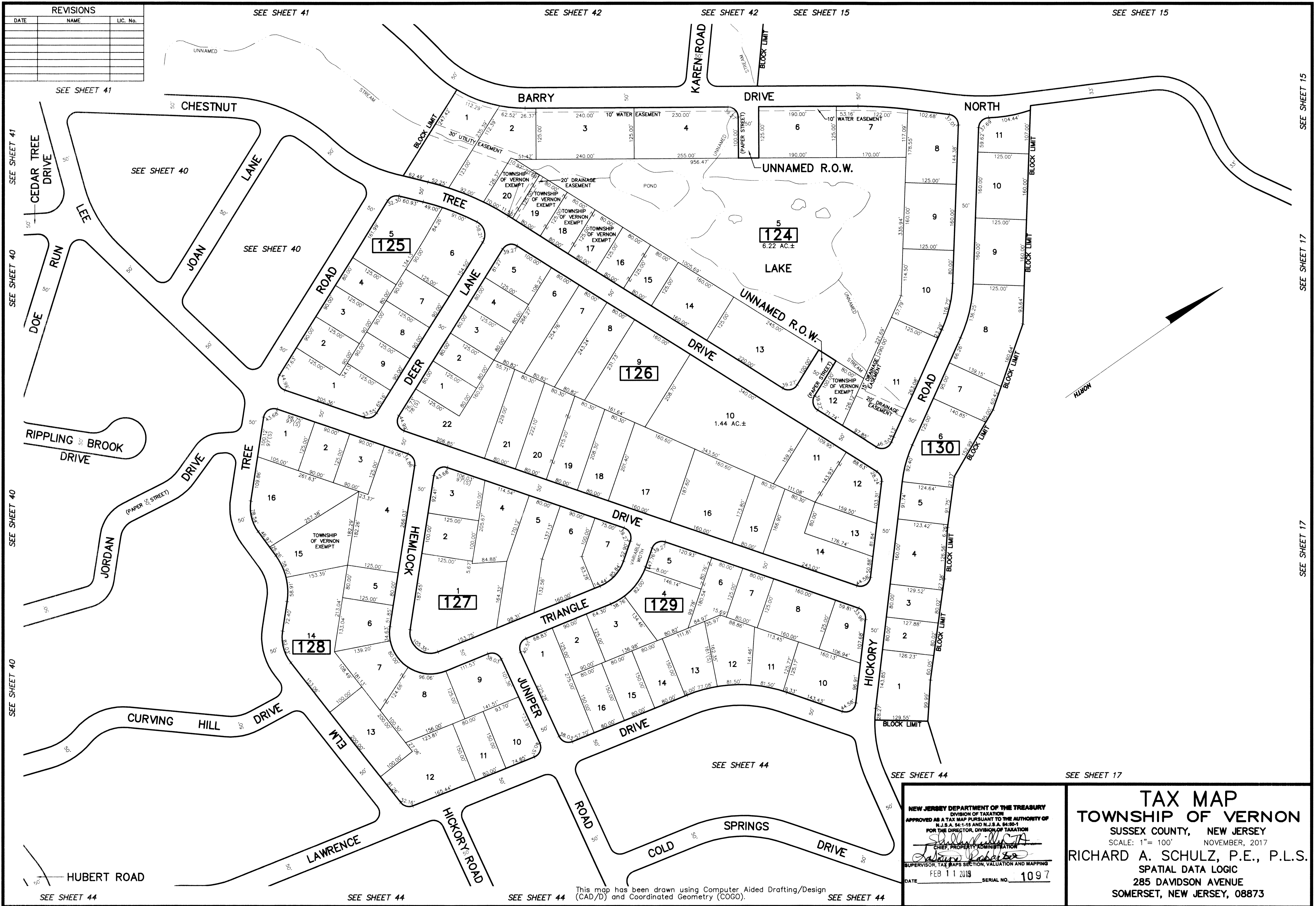


REVISIONS		
DATE	NAME	LIC. No.



SEE SHEET 41

SEE SHEET 40

SEE SHEET 40

SEE SHEET 41

SEE SHEET 42

SEE SHEET 15

SEE SHEET 15

SEE SHEET 40

SEE SHEET 40

SEE SHEET 40

SEE SHEET 41

SEE SHEET 42

SEE SHEET 15

SEE SHEET 15

SEE SHEET 40

SEE SHEET 40

SEE SHEET 40

SEE SHEET 41

SEE SHEET 42

SEE SHEET 15

SEE SHEET 15

NEW JERSEY DEPARTMENT OF THE TREASURY
 DIVISION OF TAXATION
 APPROVED AS A TAX MAP PURSUANT TO THE AUTHORITY OF
 N.J.S.A. 54:1-15 AND N.J.S.A. 54:8-1
 FOR THE DIRECTOR, DIVISION OF TAXATION
Shelley A. [Signature]
 CHIEF, PROPERTY ADMINISTRATION
Richard A. Schulz, P.E., P.L.S.
 SUPERVISOR, TAX MAPS SECTION, VALUATION AND MAPPING
 DATE FEB 11 2019 SERIAL NO. 1097

TAX MAP
TOWNSHIP OF VERNON
 SUSSEX COUNTY, NEW JERSEY
 SCALE: 1" = 100' NOVEMBER, 2017
RICHARD A. SCHULZ, P.E., P.L.S.
 SPATIAL DATA LOGIC
 285 DAVIDSON AVENUE
 SOMERSET, NEW JERSEY, 08873

This map has been drawn using Computer Aided Drafting/Design (CAD/D) and Coordinated Geometry (COGO).