

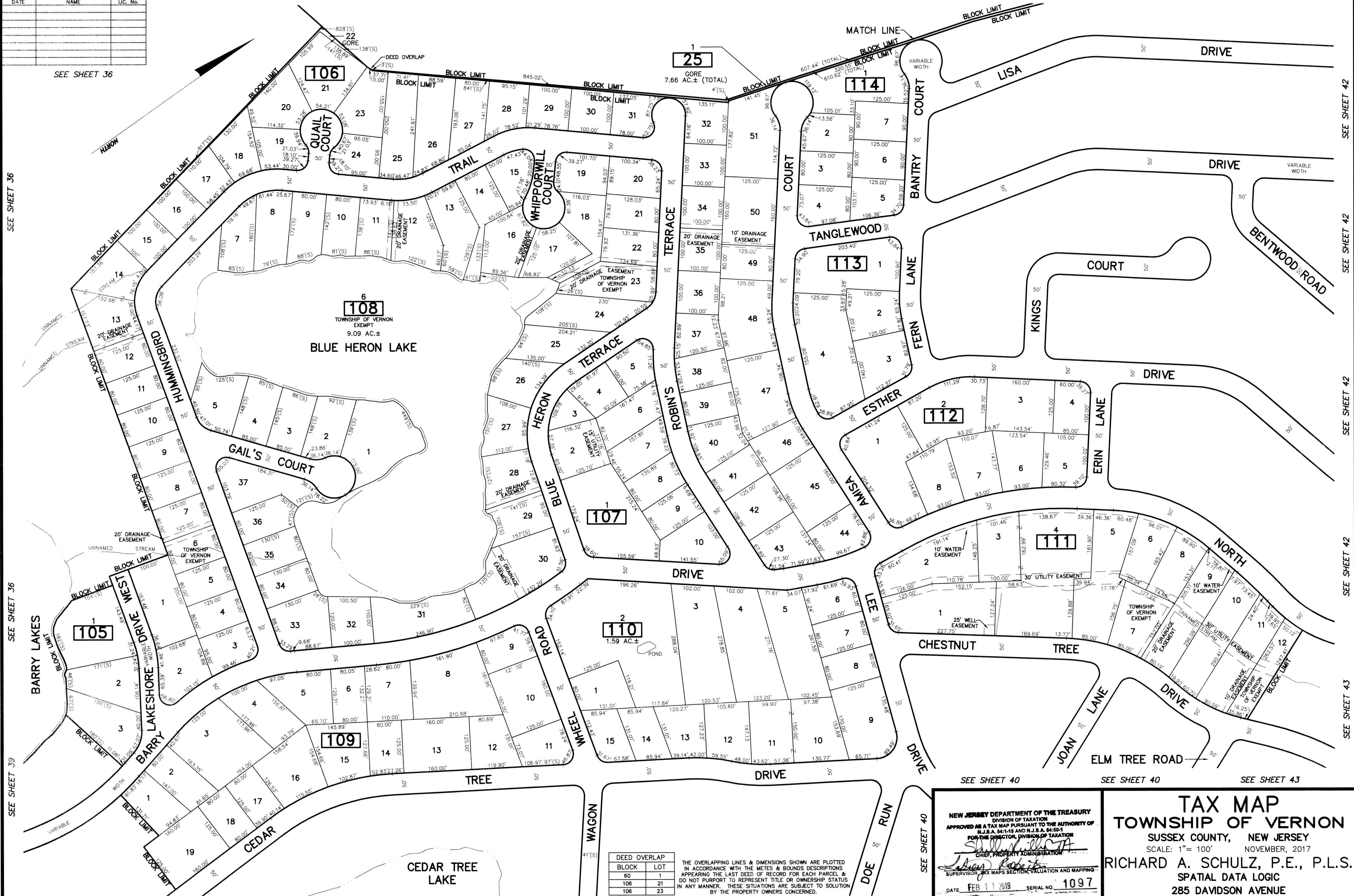
REVISIONS		
DATE	NAME	LIC. No.

SEE SHEET 36

SEE SHEET 35

SEE SHEET 35

SEE SHEET 42



SEE SHEET 36

SEE SHEET 36

SEE SHEET 39

SEE SHEET 36

SEE SHEET 40

SEE SHEET 40

SEE SHEET 40

SEE SHEET 40

SEE SHEET 43

SEE SHEET 42

SEE SHEET 42

SEE SHEET 42

SEE SHEET 42

SEE SHEET 43

DEED OVERLAP	
BLOCK	LOT
80	1
108	21
106	23

THE OVERLAPPING LINES & DIMENSIONS SHOWN ARE PLOTTED IN ACCORDANCE WITH THE METES & BOUNDS DESCRIPTIONS APPEARING IN THE LAST DEED OF RECORD FOR EACH PARCEL & DO NOT PURPORT TO REPRESENT TITLE OR OWNERSHIP STATUS IN ANY MANNER. THESE SITUATIONS ARE SUBJECT TO SOLUTION BY THE PROPERTY OWNERS CONCERNED.

NEW JERSEY DEPARTMENT OF THE TREASURY
 DIVISION OF TAXATION
 APPROVED AS A TAX MAP PURSUANT TO THE AUTHORITY OF
 N.J.S.A. 54:1-15 AND N.J.S.A. 54:50-1
 FOR THE DIRECTOR, DIVISION OF TAXATION
Shirley A. ...
 CHIEF, PROPERTY ADMINISTRATION
Richard A. Schulz
 SUPERVISOR, TAX MAPS SECTION, VALUATION AND MAPPING
 DATE: FEB 11 2019 SERIAL NO. 1097

TAX MAP
TOWNSHIP OF VERNON
 SUSSEX COUNTY, NEW JERSEY
 SCALE: 1" = 100' NOVEMBER, 2017
RICHARD A. SCHULZ, P.E., P.L.S.
 SPATIAL DATA LOGIC
 285 DAVIDSON AVENUE
 SOMERSET, NEW JERSEY, 08873

This map has been drawn using Computer Aided Drafting/Design (CAD/D) and Coordinated Geometry (COGO).