

REVISIONS		
DATE	NAME	LIC. No.

SEE SHEET 41

SEE SHEET 41

SEE SHEET 41

SEE SHEET 41

SEE SHEET 39

SEE SHEET 39

SEE SHEET 45

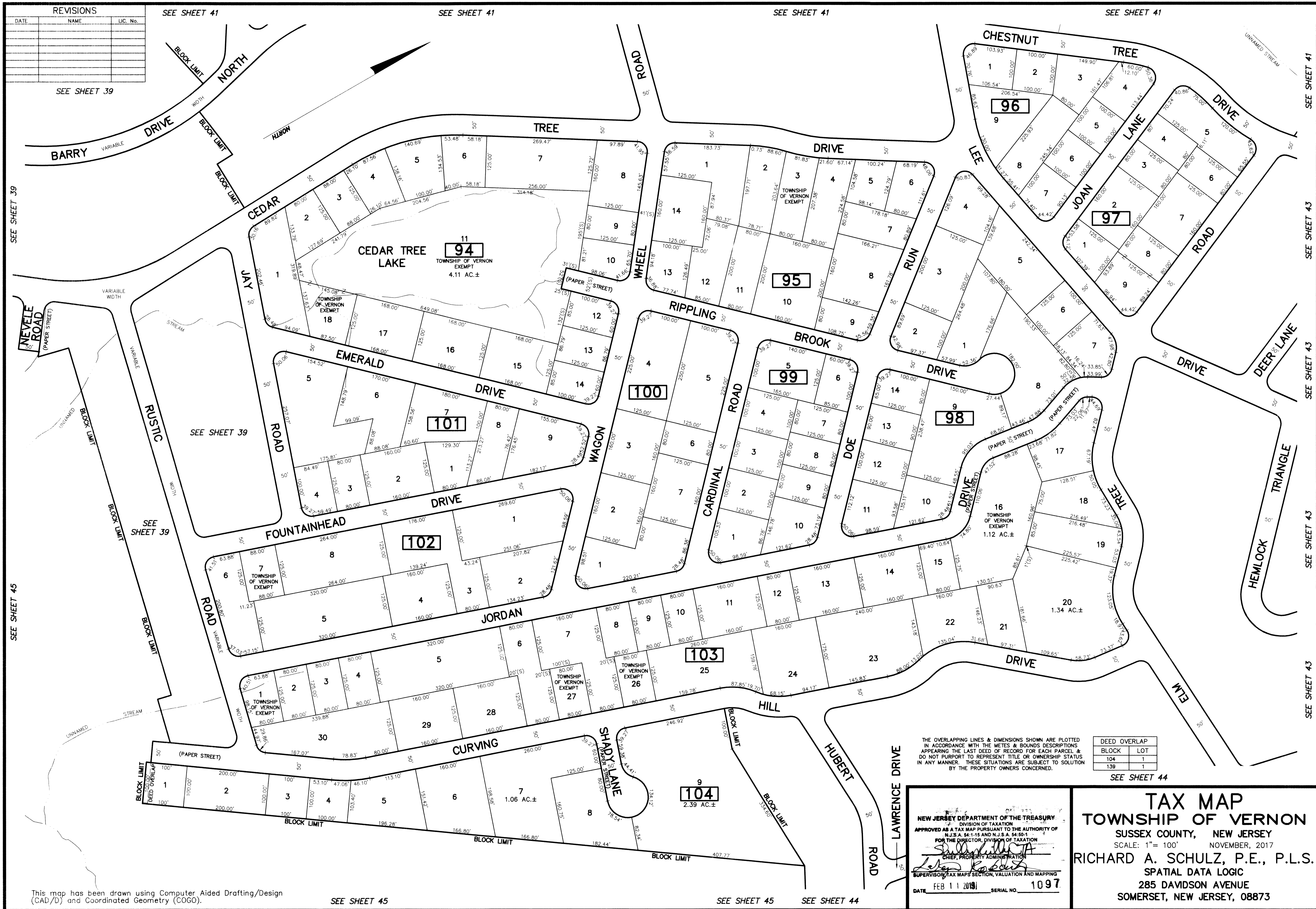
SEE SHEET 41

SEE SHEET 43

SEE SHEET 43

SEE SHEET 43

SEE SHEET 43



THE OVERLAPPING LINES & DIMENSIONS SHOWN ARE PLOTTED IN ACCORDANCE WITH THE METES & BOUNDS DESCRIPTIONS APPEARING IN THE LAST DEED OF RECORD FOR EACH PARCEL & DO NOT PURPORT TO REPRESENT TITLE OR OWNERSHIP STATUS IN ANY MANNER. THESE SITUATIONS ARE SUBJECT TO SOLUTION BY THE PROPERTY OWNERS CONCERNED.

DEED OVERLAP	
BLOCK	LOT
104	1
139	1

SEE SHEET 44

This map has been drawn using Computer Aided Drafting/Design (CAD/D) and Coordinated Geometry (COGO).

SEE SHEET 45

SEE SHEET 45

SEE SHEET 44

NEW JERSEY DEPARTMENT OF THE TREASURY  
 DIVISION OF TAXATION  
 APPROVED AS A TAX MAP PURSUANT TO THE AUTHORITY OF  
 N.J.S.A. 54:1-15 AND N.J.S.A. 54:50-1  
 FOR THE DIRECTOR, DIVISION OF TAXATION  
*[Signature]*  
 CHIEF, PROPERTY ADMINISTRATION  
*[Signature]*  
 SUPERVISOR, TAX MAPS SECTION, VALUATION AND MAPPING  
 DATE FEB 11 2019 SERIAL NO. 1097

**TAX MAP**  
**TOWNSHIP OF VERNON**  
 SUSSEX COUNTY, NEW JERSEY  
 SCALE: 1" = 100' NOVEMBER, 2017  
**RICHARD A. SCHULZ, P.E., P.L.S.**  
 SPATIAL DATA LOGIC  
 285 DAVIDSON AVENUE  
 SOMERSET, NEW JERSEY, 08873