

REVISIONS		
DATE	NAME	LOC. No.

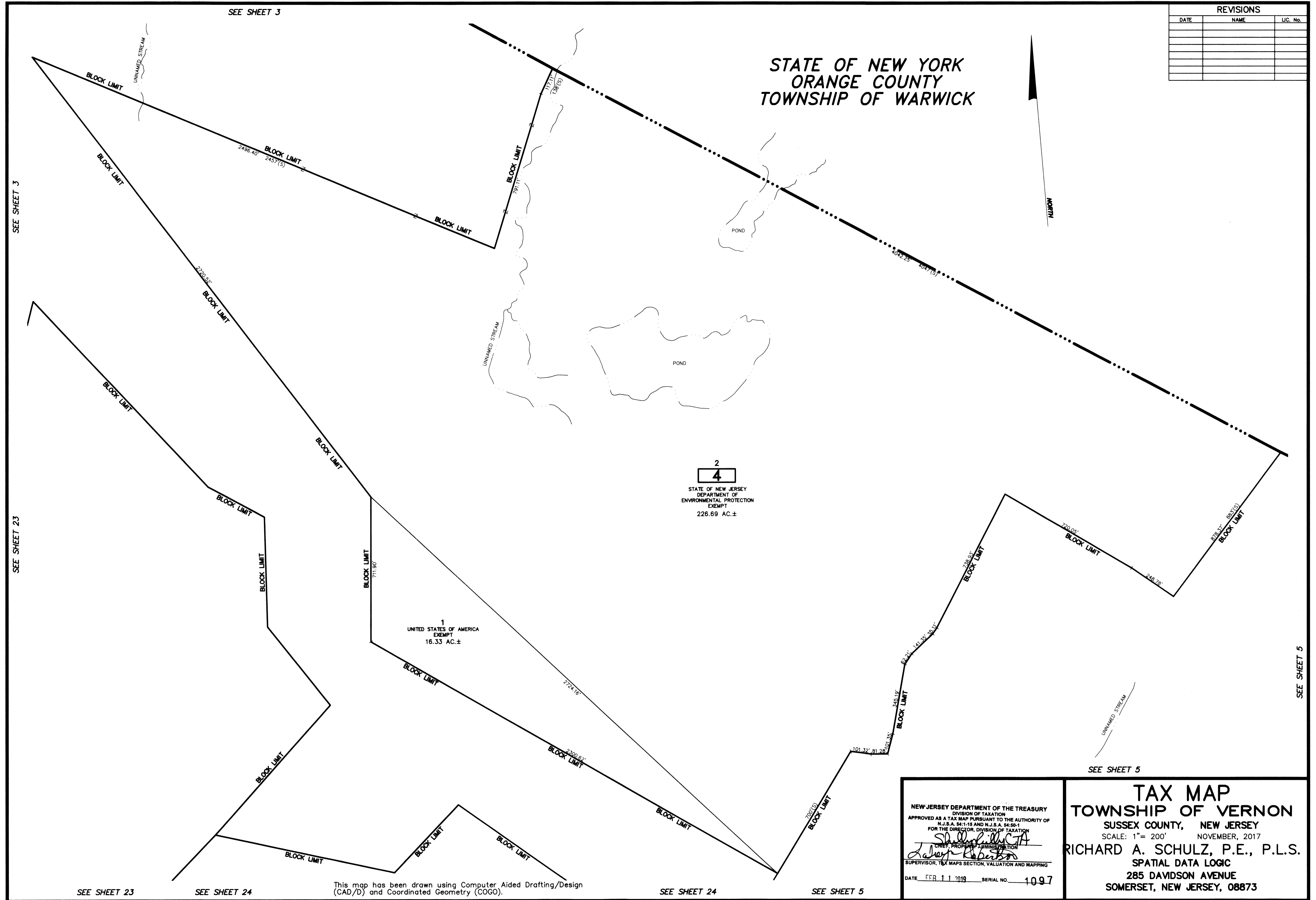
STATE OF NEW YORK
ORANGE COUNTY
TOWNSHIP OF WARWICK



2
4
STATE OF NEW JERSEY
DEPARTMENT OF
ENVIRONMENTAL PROTECTION
EXEMPT
226.69 AC.±

1
UNITED STATES OF AMERICA
EXEMPT
16.33 AC.±

This map has been drawn using Computer Aided Drafting/Design (CAD/D) and Coordinated Geometry (COGO).



NEW JERSEY DEPARTMENT OF THE TREASURY
DIVISION OF TAXATION
APPROVED AS A TAX MAP PURSUANT TO THE AUTHORITY OF
N.J.S.A. 54:1-15 AND N.J.S.A. 54:50-1
FOR THE DIRECTOR, DIVISION OF TAXATION
Richard A. Schulz
CHIEF, PROPERTY ADMINISTRATION
John Roberts
SUPERVISOR, TAX MAPS SECTION, VALUATION AND MAPPING
DATE FEB 11 2019 SERIAL NO. 1097

TAX MAP
TOWNSHIP OF VERNON
SUSSEX COUNTY, NEW JERSEY
SCALE: 1"= 200' NOVEMBER, 2017
RICHARD A. SCHULZ, P.E., P.L.S.
SPATIAL DATA LOGIC
285 DAVIDSON AVENUE
SOMERSET, NEW JERSEY, 08873

SEE SHEET 5