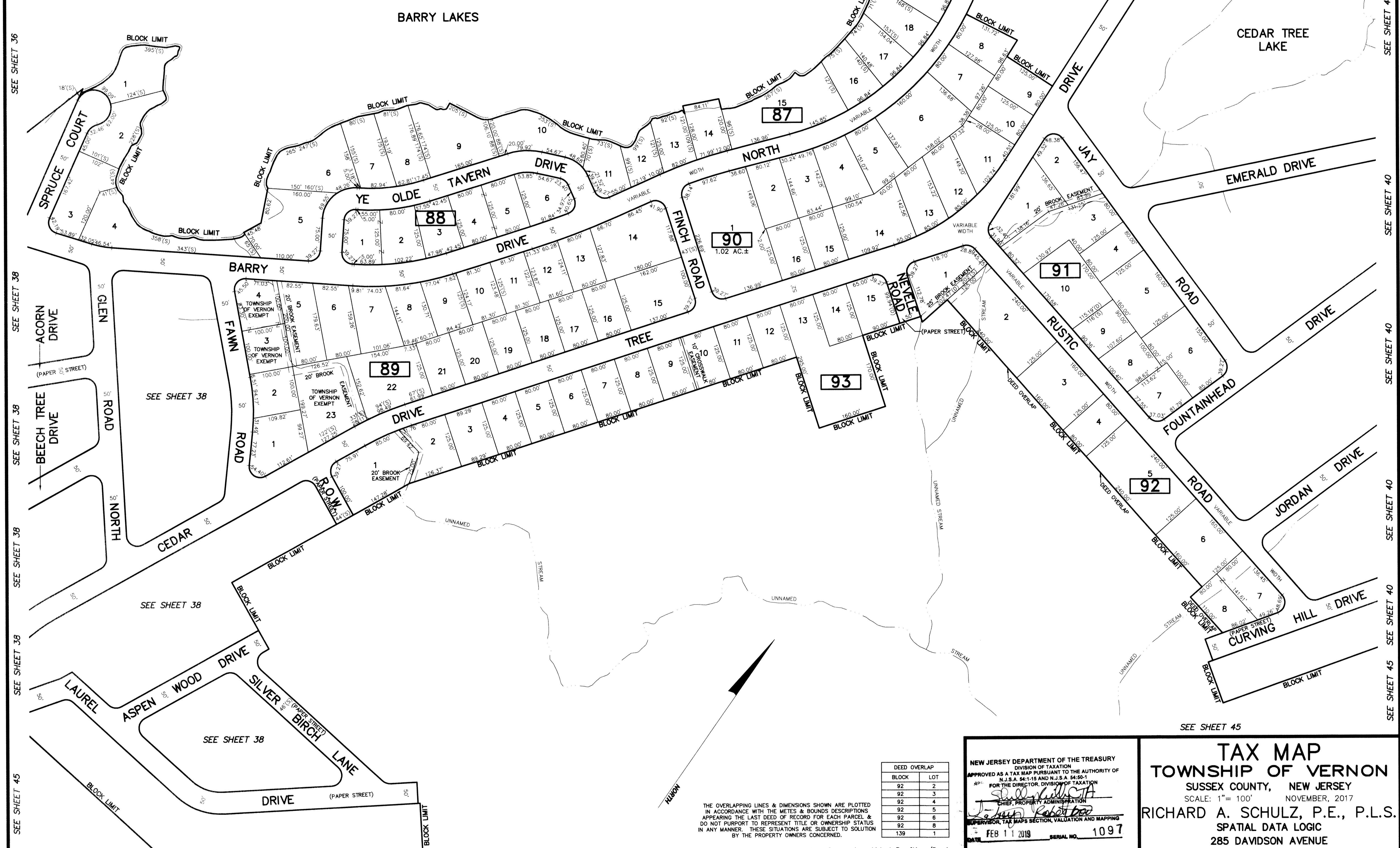


REVISIONS		
DATE	NAME	LIC. No.

SEE SHEET 36 SEE SHEET 36 SEE SHEET 41 SEE SHEET 41 SEE SHEET 40



SEE SHEET 36
SEE SHEET 38
SEE SHEET 38
SEE SHEET 38
SEE SHEET 38
SEE SHEET 45

SEE SHEET 40
SEE SHEET 40
SEE SHEET 40
SEE SHEET 40
SEE SHEET 40
SEE SHEET 45

SEE SHEET 45 SEE SHEET 38 SEE SHEET 45

DEED OVERLAP	
BLOCK	LOT
92	2
92	3
92	4
92	5
92	6
92	8
139	1

THE OVERLAPPING LINES & DIMENSIONS SHOWN ARE PLOTTED IN ACCORDANCE WITH THE METES & BOUNDS DESCRIPTIONS APPEARING THE LAST DEED OF RECORD FOR EACH PARCEL & DO NOT PURPORT TO REPRESENT TITLE OR OWNERSHIP STATUS IN ANY MANNER. THESE SITUATIONS ARE SUBJECT TO SOLUTION BY THE PROPERTY OWNERS CONCERNED.

This map has been drawn using Computer Aided Drafting/Design (CAD/D) and Coordinated Geometry (COGO).

NEW JERSEY DEPARTMENT OF THE TREASURY
DIVISION OF TAXATION
APPROVED AS A TAX MAP PURSUANT TO THE AUTHORITY OF
N.J.S.A. 54:1-15 AND N.J.S.A. 54:50-1
FOR THE DIRECTOR, DIVISION OF TAXATION
[Signature]
CHIEF, PROPERTY ADMINISTRATION
[Signature]
SUPERVISOR, TAX MAPS SECTION, VALUATION AND MAPPING
DATE: FEB 11 2019 SERIAL NO. 1097

TAX MAP
TOWNSHIP OF VERNON
SUSSEX COUNTY, NEW JERSEY
SCALE: 1" = 100' NOVEMBER, 2017
RICHARD A. SCHULZ, P.E., P.L.S.
SPATIAL DATA LOGIC
285 DAVIDSON AVENUE
SOMERSET, NEW JERSEY, 08873