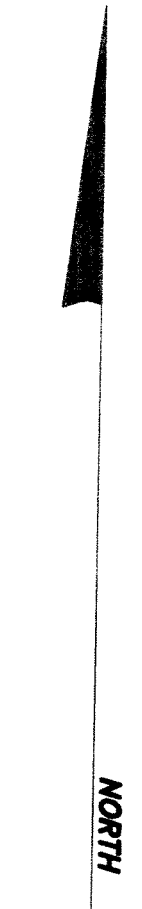
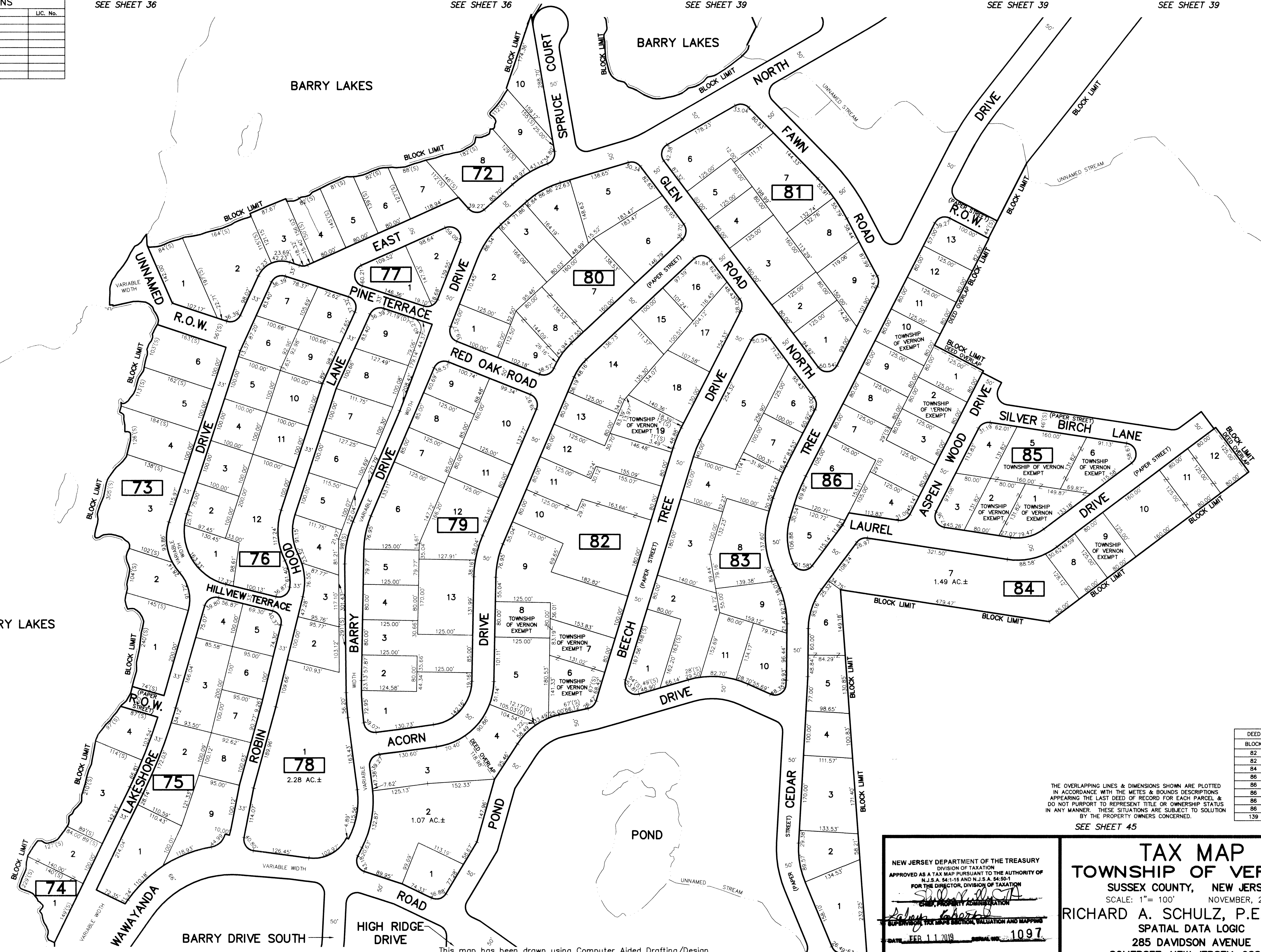


REVISIONS		
DATE	NAME	LIC. No.

SEE SHEET 36 SEE SHEET 36 SEE SHEET 39 SEE SHEET 39 SEE SHEET 39



BARRY LAKES



SEE SHEET 36

SEE SHEET 36

SEE SHEET 37

SEE SHEET 37

SEE SHEET 37

SEE SHEET 39

SEE SHEET 45

SEE SHEET 45

SEE SHEET 45

DEED OVERLAP	
BLOCK	LOT
82	3
82	4
84	12
86	1
86	10
86	11
86	12
86	13
139	1

THE OVERLAPPING LINES & DIMENSIONS SHOWN ARE PLOTTED IN ACCORDANCE WITH THE METES & BOUNDS DESCRIPTIONS APPEARING THE LAST DEED OF RECORD FOR EACH PARCEL & DO NOT PURPORT TO REPRESENT TITLE OR OWNERSHIP STATUS IN ANY MANNER. THESE SITUATIONS ARE SUBJECT TO SOLUTION BY THE PROPERTY OWNERS CONCERNED.

SEE SHEET 45

NEW JERSEY DEPARTMENT OF THE TREASURY
 DIVISION OF TAXATION
 APPROVED AS A TAX MAP PURSUANT TO THE AUTHORITY OF
 N.J.S.A. 54:1-15 AND N.J.S.A. 54:50-1
 FOR THE DIRECTOR, DIVISION OF TAXATION
Shirley A. ...
 CHIEF, PROPERTY ADMINISTRATION
Richard A. Schulz
 SUPERVISOR, TAX MAPS, ELECTIONS, VALUATION AND MAPPING
 DATE: FEB. 11, 2019 APPROVAL NO. 1097

TAX MAP
TOWNSHIP OF VERNON
 SUSSEX COUNTY, NEW JERSEY
 SCALE: 1"= 100' NOVEMBER, 2017
RICHARD A. SCHULZ, P.E., P.L.S.
 SPATIAL DATA LOGIC
 285 DAVIDSON AVENUE
 SOMERSET, NEW JERSEY, 08873

This map has been drawn using Computer Aided Drafting/Design (CAD/D) and Coordinated Geometry (COGO).