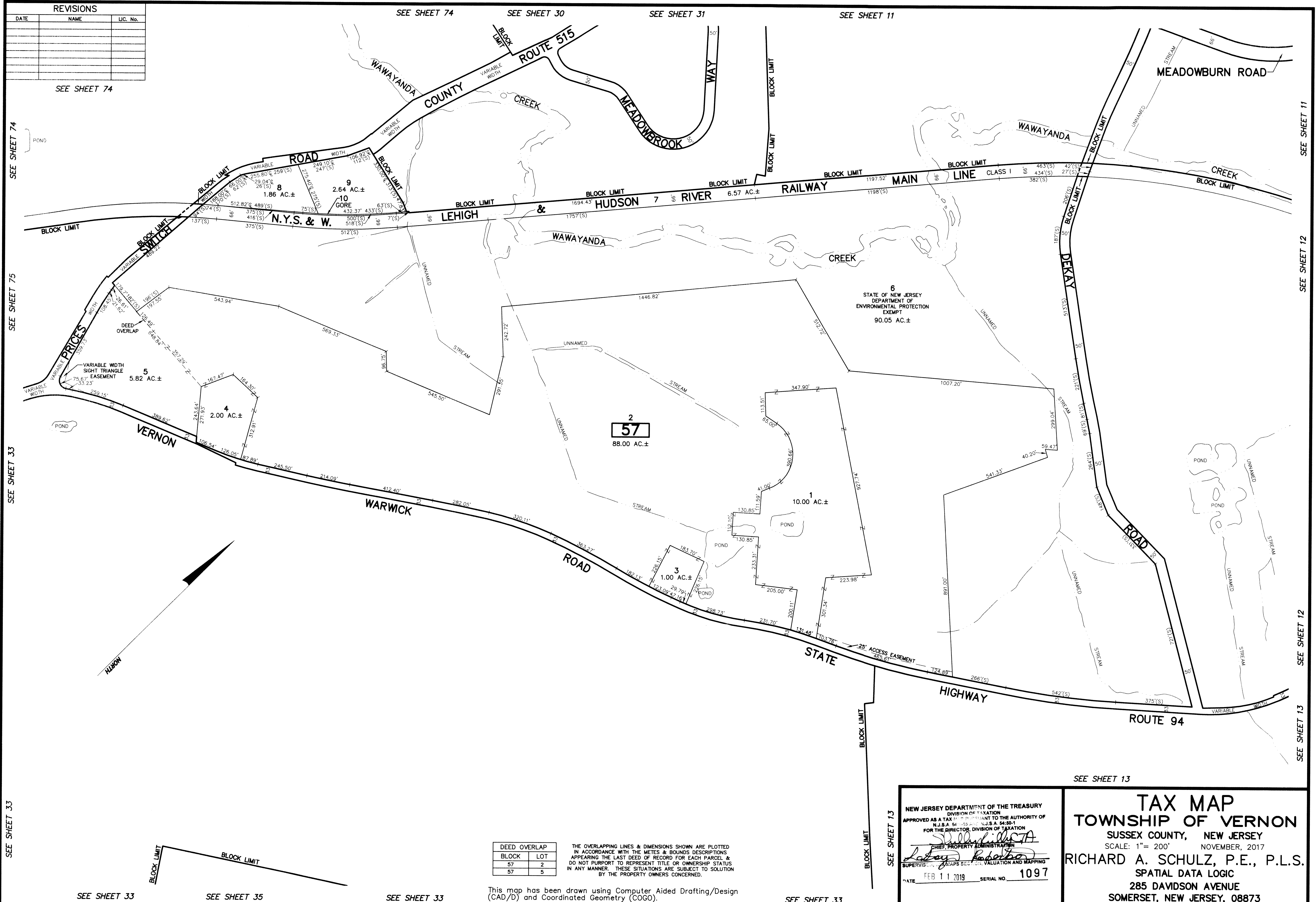
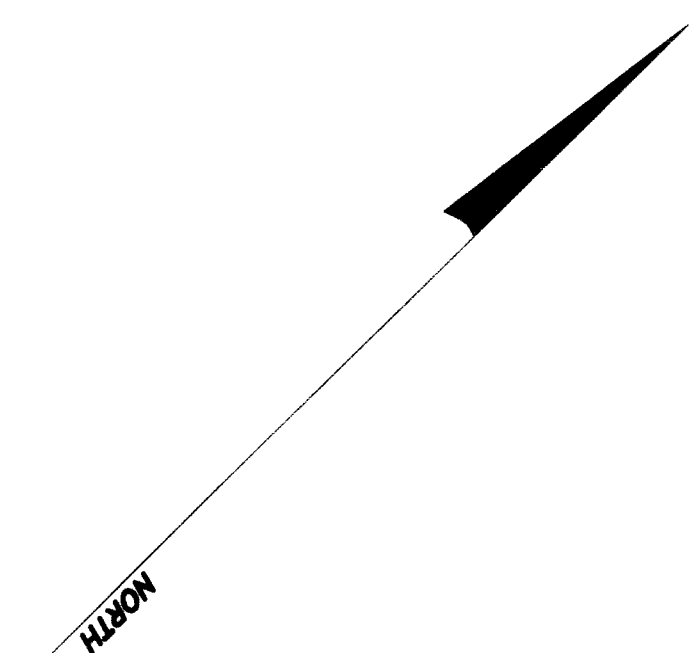


| REVISIONS |      |          |
|-----------|------|----------|
| DATE      | NAME | LIC. No. |
|           |      |          |
|           |      |          |
|           |      |          |
|           |      |          |
|           |      |          |
|           |      |          |
|           |      |          |
|           |      |          |
|           |      |          |
|           |      |          |



SEE SHEET 74  
SEE SHEET 75  
SEE SHEET 33  
SEE SHEET 33  
SEE SHEET 33

SEE SHEET 11  
SEE SHEET 12  
SEE SHEET 12  
SEE SHEET 13



| DEED OVERLAP |     |
|--------------|-----|
| BLOCK        | LOT |
| 57           | 2   |
| 57           | 5   |

THE OVERLAPPING LINES & DIMENSIONS SHOWN ARE PLOTTED IN ACCORDANCE WITH THE METES & BOUNDS DESCRIPTIONS APPEARING IN THE LAST DEED OF RECORD FOR EACH PARCEL & DO NOT PURPORT TO REPRESENT TITLE OR OWNERSHIP STATUS IN ANY MANNER. THESE SITUATIONS ARE SUBJECT TO SOLUTION BY THE PROPERTY OWNERS CONCERNED.

This map has been drawn using Computer Aided Drafting/Design (CAD/D) and Coordinated Geometry (COGO).

NEW JERSEY DEPARTMENT OF THE TREASURY  
DIVISION OF TAXATION  
APPROVED AS A TAX MAP PURSUANT TO THE AUTHORITY OF  
N.J.S.A. 54:10-10 AND N.J.S.A. 54:50-1  
FOR THE DIRECTOR, DIVISION OF TAXATION

*[Signature]*  
CHIEF, PROPERTY ADMINISTRATION

*[Signature]*  
SUPERVISOR, MAPS SECTION, VALUATION AND MAPPING

DATE FEB 11 2019 SERIAL NO. 1097

SEE SHEET 13

### TAX MAP

## TOWNSHIP OF VERNON

SUSSEX COUNTY, NEW JERSEY  
SCALE: 1" = 200' NOVEMBER, 2017

**RICHARD A. SCHULZ, P.E., P.L.S.**  
SPATIAL DATA LOGIC  
285 DAVIDSON AVENUE  
SOMERSET, NEW JERSEY, 08873

SEE SHEET 33 SEE SHEET 35 SEE SHEET 33 SEE SHEET 33