

REVISIONS		
DATE	NAME	LIC. No.

SEE SHEET 74

SEE SHEET 74

SEE SHEET 32

SEE SHEET 32

This map has been drawn using Computer Aided Drafting/Design (CAD/D) and Coordinated Geometry (COGO).

SEE SHEET 32

SEE SHEET 32

SEE SHEET 74

SEE SHEET 30

SEE SHEET 30

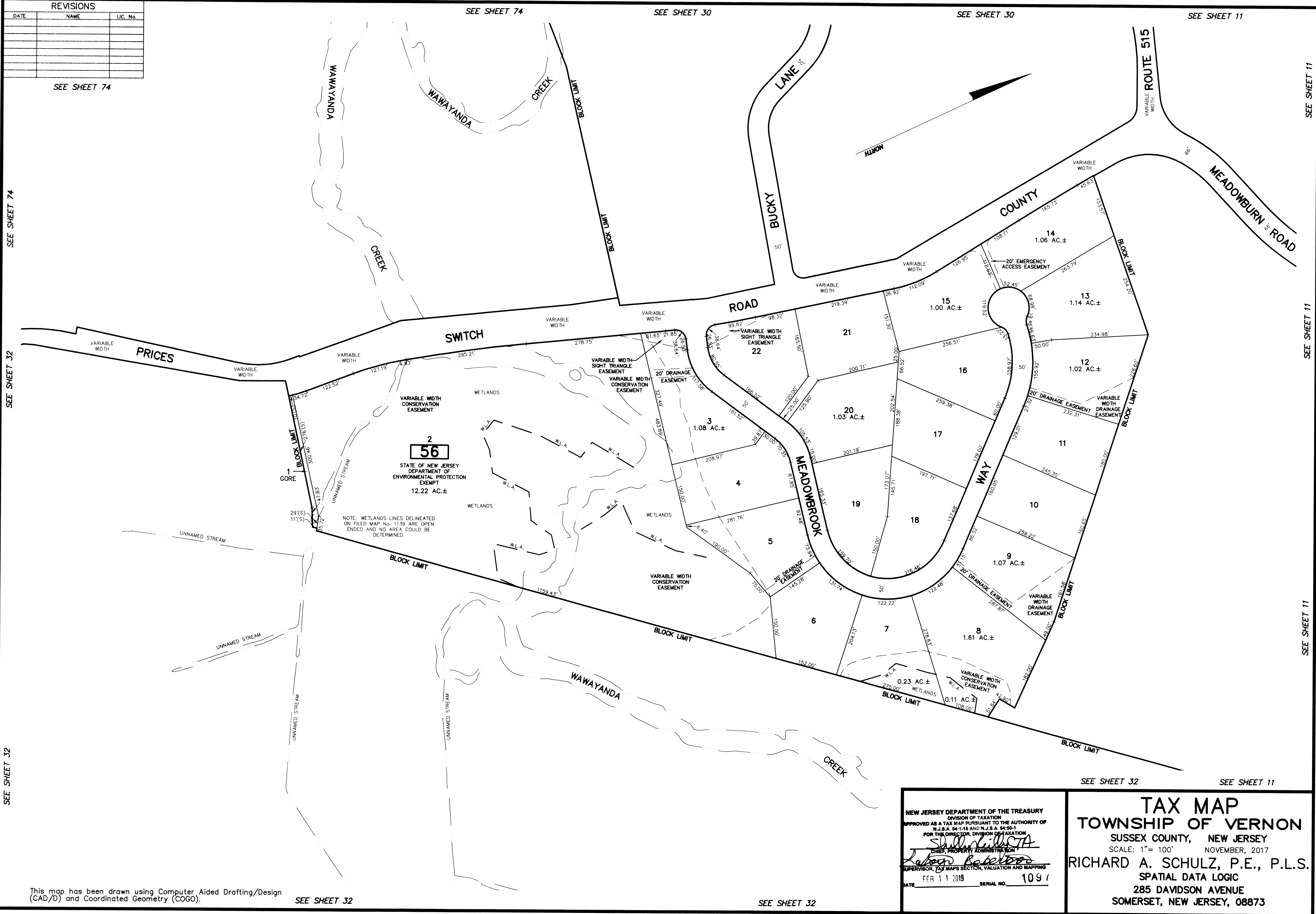
SEE SHEET 11

SEE SHEET 11

SEE SHEET 11

SEE SHEET 11

SEE SHEET 11



NEW JERSEY DEPARTMENT OF THE TREASURY
 DIVISION OF TAXATION
 APPROVED AS A TAX MAP PURSUANT TO THE AUTHORITY OF
 N.J.S.A. 54:1-15 AND N.J.S.A. 54:50-1
 FOR THE DIRECTOR, DIVISION OF TAXATION
Shirley K. Kelly
 CHIEF, PROPERTY ADMINISTRATION
Richard A. Schulz
 SUPERVISOR, TAX MAPS SECTION, VALUATION AND MAPPING
 DATE: FEB 11 2019 SERIAL NO. 1091

TAX MAP
TOWNSHIP OF VERNON
 SUSSEX COUNTY, NEW JERSEY
 SCALE: 1" = 100' NOVEMBER, 2017
RICHARD A. SCHULZ, P.E., P.L.S.
 SPATIAL DATA LOGIC
 285 DAVIDSON AVENUE
 SOMERSET, NEW JERSEY, 08873