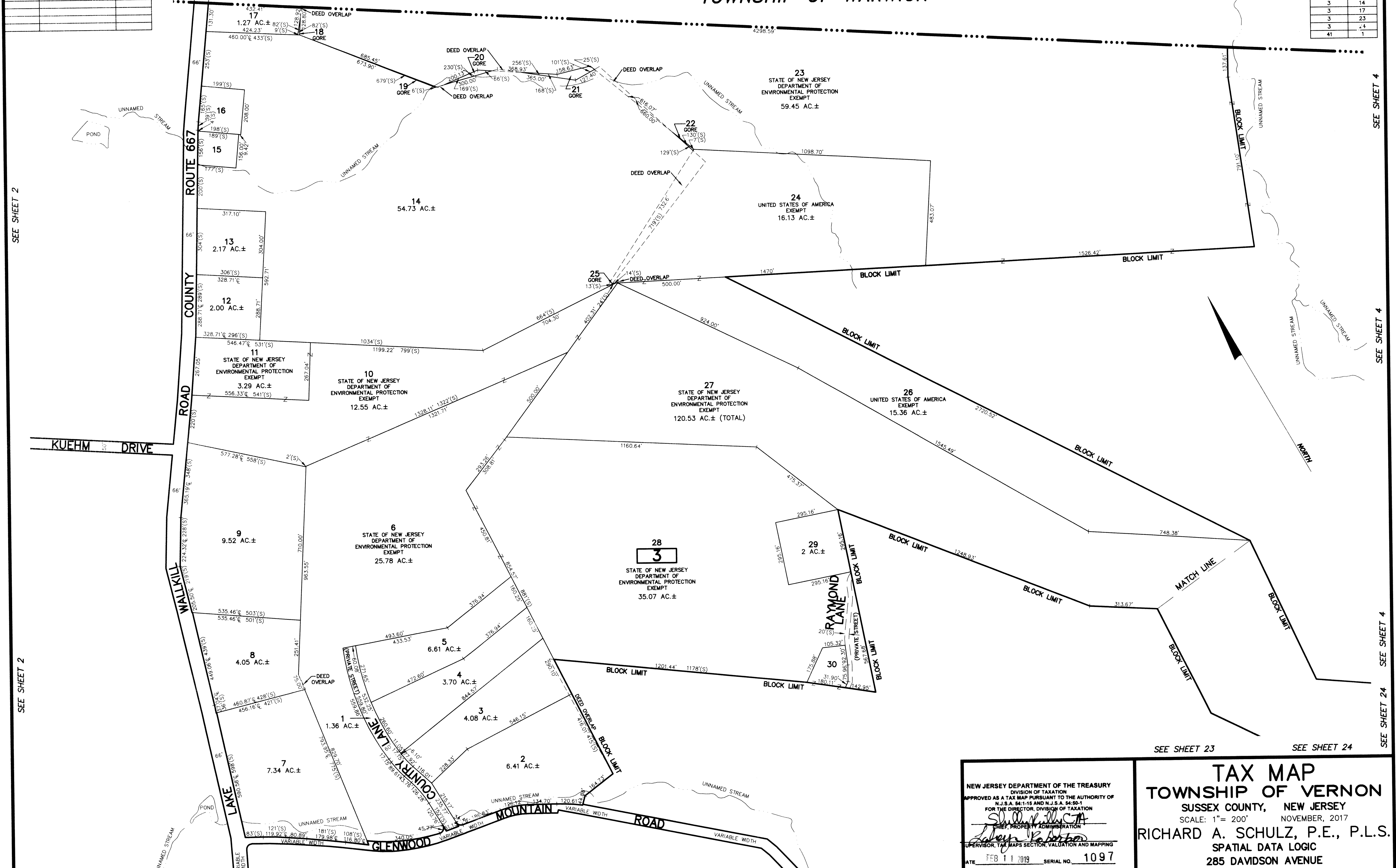


STATE OF NEW YORK ORANGE COUNTY TOWNSHIP OF WARWICK

THE OVERLAPPING LINES & DIMENSIONS SHOWN ARE PLOTTED IN ACCORDANCE WITH THE METES & BOUNDS DESCRIPTIONS APPEARING IN THE LAST DEED OF RECORD FOR EACH PARCEL & DO NOT PURPORT TO REPRESENT TITLE OR OWNERSHIP STATUS IN ANY MANNER. THESE SITUATIONS ARE SUBJECT TO SOLUTION BY THE PROPERTY OWNERS CONCERNED.

DEED OVERLAP	
BLOCK	LOT
3	2
3	3
3	6
3	8
3	10
3	14
3	17
3	23
3	24
41	1

REVISIONS		
DATE	NAME	L.C. No.



SEE SHEET 2

SEE SHEET 2

SEE SHEET 4

SEE SHEET 4

SEE SHEET 4

SEE SHEET 24

SEE SHEET 23

SEE SHEET 24

SEE SHEET 22

SEE SHEET 22

SEE SHEET 23

This map has been drawn using Computer Aided Drafting/Design (CAD/D) and Coordinated Geometry (COGO).

NEW JERSEY DEPARTMENT OF THE TREASURY
DIVISION OF TAXATION
APPROVED AS A TAX MAP PURSUANT TO THE AUTHORITY OF
N.J.S.A. 54:1-15 AND N.J.S.A. 54:50-1
FOR THE DIRECTOR, DIVISION OF TAXATION

[Signature]
CHIEF, PROPERTY ADMINISTRATION

[Signature]
SUPERVISOR, TAX MAPS SECTION, VALUATION AND MAPPING

DATE FEB 11 2019 SERIAL NO. 1097

TAX MAP
TOWNSHIP OF VERNON
SUSSEX COUNTY, NEW JERSEY
SCALE: 1" = 200' NOVEMBER, 2017
RICHARD A. SCHULZ, P.E., P.L.S.
SPATIAL DATA LOGIC
285 DAVIDSON AVENUE
SOMERSET, NEW JERSEY, 08873