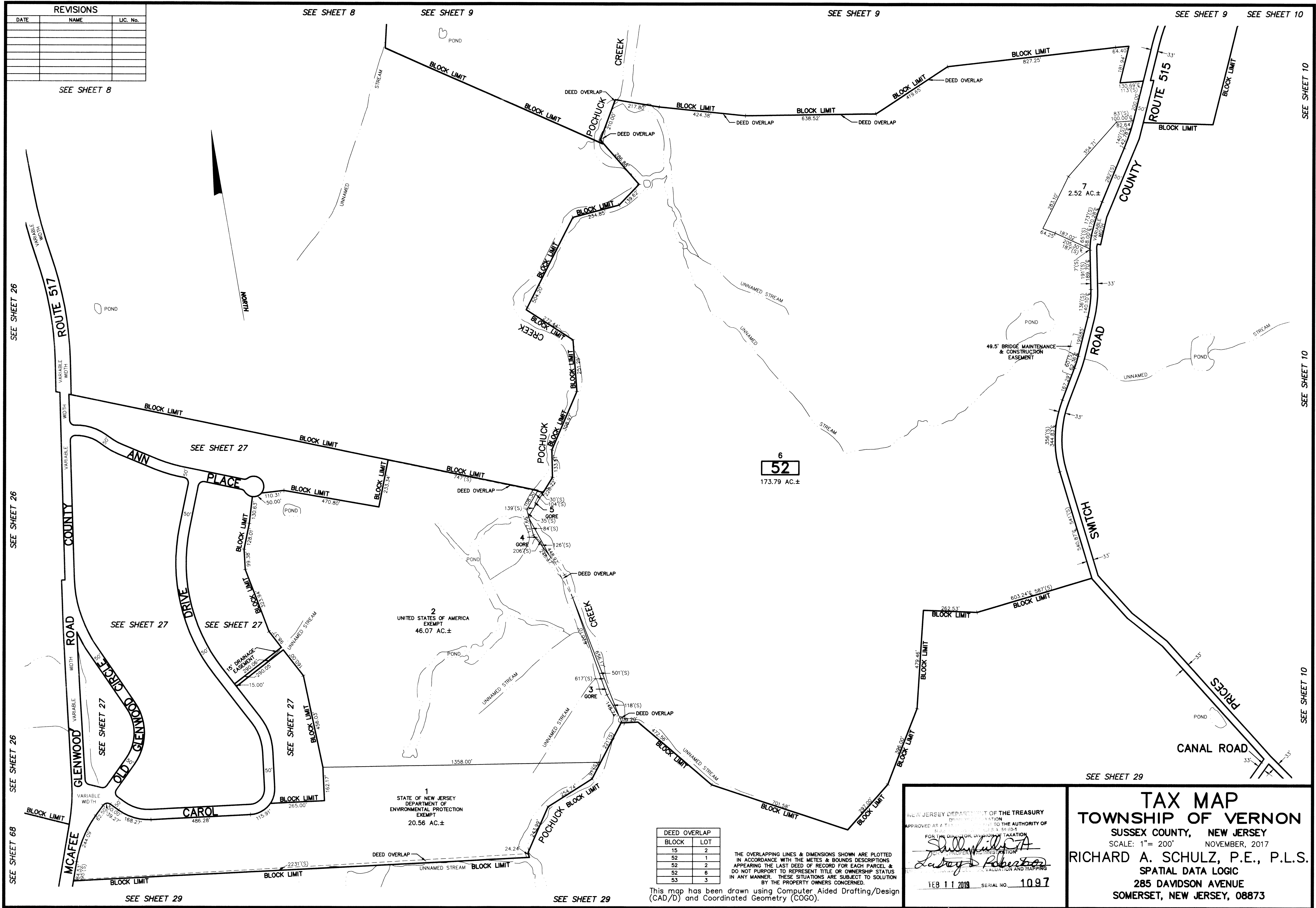


| REVISIONS | | |
|-----------|------|----------|
| DATE | NAME | LIC. No. |
| | | |
| | | |
| | | |
| | | |
| | | |
| | | |
| | | |
| | | |
| | | |
| | | |



SEE SHEET 8

SEE SHEET 8

SEE SHEET 9

SEE SHEET 9

SEE SHEET 9

SEE SHEET 10

SEE SHEET 26

SEE SHEET 26

SEE SHEET 26

SEE SHEET 26

SEE SHEET 27

SEE SHEET 27

SEE SHEET 27

SEE SHEET 27

SEE SHEET 27

SEE SHEET 27

SEE SHEET 27

SEE SHEET 27

SEE SHEET 27

SEE SHEET 27

SEE SHEET 27

SEE SHEET 27

1
STATE OF NEW JERSEY
DEPARTMENT OF
ENVIRONMENTAL PROTECTION
EXEMPT
20.56 AC.±

2
UNITED STATES OF AMERICA
EXEMPT
46.07 AC.±

SEE SHEET 29

| DEED OVERLAP | |
|--------------|-----|
| BLOCK | LOT |
| 15 | 2 |
| 52 | 1 |
| 52 | 2 |
| 52 | 6 |
| 53 | 3 |

THE OVERLAPPING LINES & DIMENSIONS SHOWN ARE PLOTTED IN ACCORDANCE WITH THE METES & BOUNDS DESCRIPTIONS APPEARING THE LAST DEED OF RECORD FOR EACH PARCEL & DO NOT PURPORT TO REPRESENT TITLE OR OWNERSHIP STATUS IN ANY MANNER. THESE SITUATIONS ARE SUBJECT TO SOLUTION BY THE PROPERTY OWNERS CONCERNED.

This map has been drawn using Computer Aided Drafting/Design (CAD/D) and Coordinated Geometry (COGO).

NEW JERSEY DEPARTMENT OF THE TREASURY
 DIVISION OF TAXATION
 APPROVED AS A TAX MAP BY THE AUTHORITY OF
 THE DIRECTOR, DIVISION OF TAXATION
Sullivan, P.L.L.C.
 COUNTY PROPERTY ADMINISTRATION
Lafrey & Robertson
 FEB 11 2019 SERIAL NO. 1097

TAX MAP
TOWNSHIP OF VERNON
 SUSSEX COUNTY, NEW JERSEY
 SCALE: 1" = 200' NOVEMBER, 2017
RICHARD A. SCHULZ, P.E., P.L.S.
 SPATIAL DATA LOGIC
 285 DAVIDSON AVENUE
 SOMERSET, NEW JERSEY, 08873