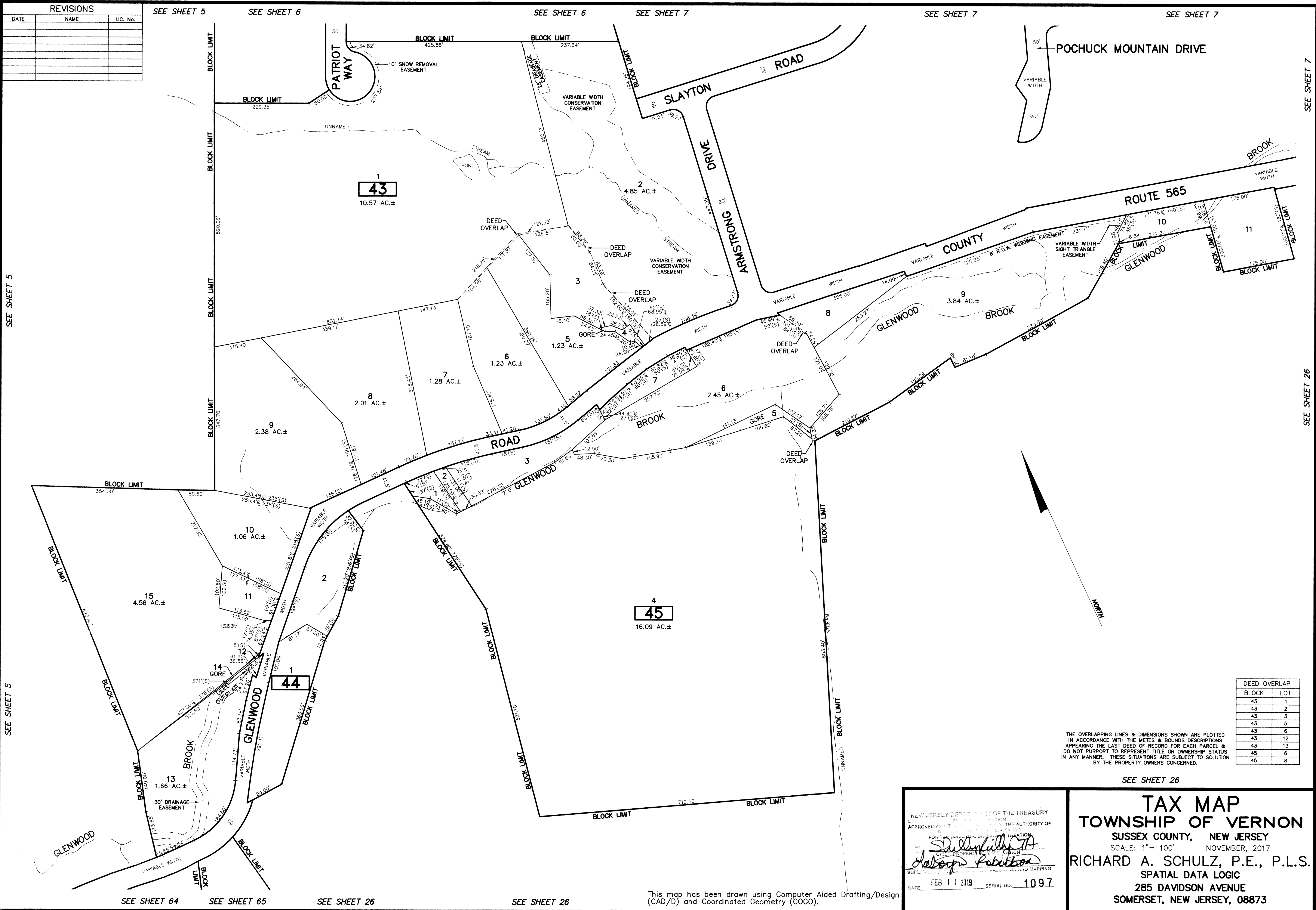


REVISIONS		
DATE	NAME	LIC. No.



SEE SHEET 5

SEE SHEET 5

SEE SHEET 5

SEE SHEET 6

SEE SHEET 6

SEE SHEET 7

SEE SHEET 7

SEE SHEET 7

SEE SHEET 7

SEE SHEET 26

SEE SHEET 64

SEE SHEET 65

SEE SHEET 26

SEE SHEET 26

This map has been drawn using Computer Aided Drafting/Design (CAD/D) and Coordinated Geometry (COGO).

DEED OVERLAP	
BLOCK	LOT
43	1
43	2
43	3
43	5
43	6
43	12
43	13
45	6
45	8

THE OVERLAPPING LINES & DIMENSIONS SHOWN ARE PLOTTED IN ACCORDANCE WITH THE METES & BOUNDS DESCRIPTIONS APPEARING THE LAST DEED OF RECORD FOR EACH PARCEL & DO NOT PURPORT TO REPRESENT TITLE OR OWNERSHIP STATUS IN ANY MANNER. THESE SITUATIONS ARE SUBJECT TO SOLUTION BY THE PROPERTY OWNERS CONCERNED.

SEE SHEET 26

NEW JERSEY DEPARTMENT OF THE TREASURY
 DIVISION OF TAXATION
 APPROVED AS A TRUE AND CORRECT COPY OF THE ORIGINAL RECORD BY THE AUTHORITY OF
 FOR THE DIRECTOR, DIVISION OF TAXATION
Shelley L. Hill
 ORIGINAL PROPERLY FILED
Robert
 SUPERVISOR, TAX MAPS SECTION, VALUATION AND MAPPING
 DATE FEB 11 2019 SERIAL NO. 1097

TAX MAP
TOWNSHIP OF VERNON
 SUSSEX COUNTY, NEW JERSEY
 SCALE: 1" = 100' NOVEMBER, 2017
RICHARD A. SCHULZ, P.E., P.L.S.
 SPATIAL DATA LOGIC
 285 DAVIDSON AVENUE
 SOMERSET, NEW JERSEY, 08873