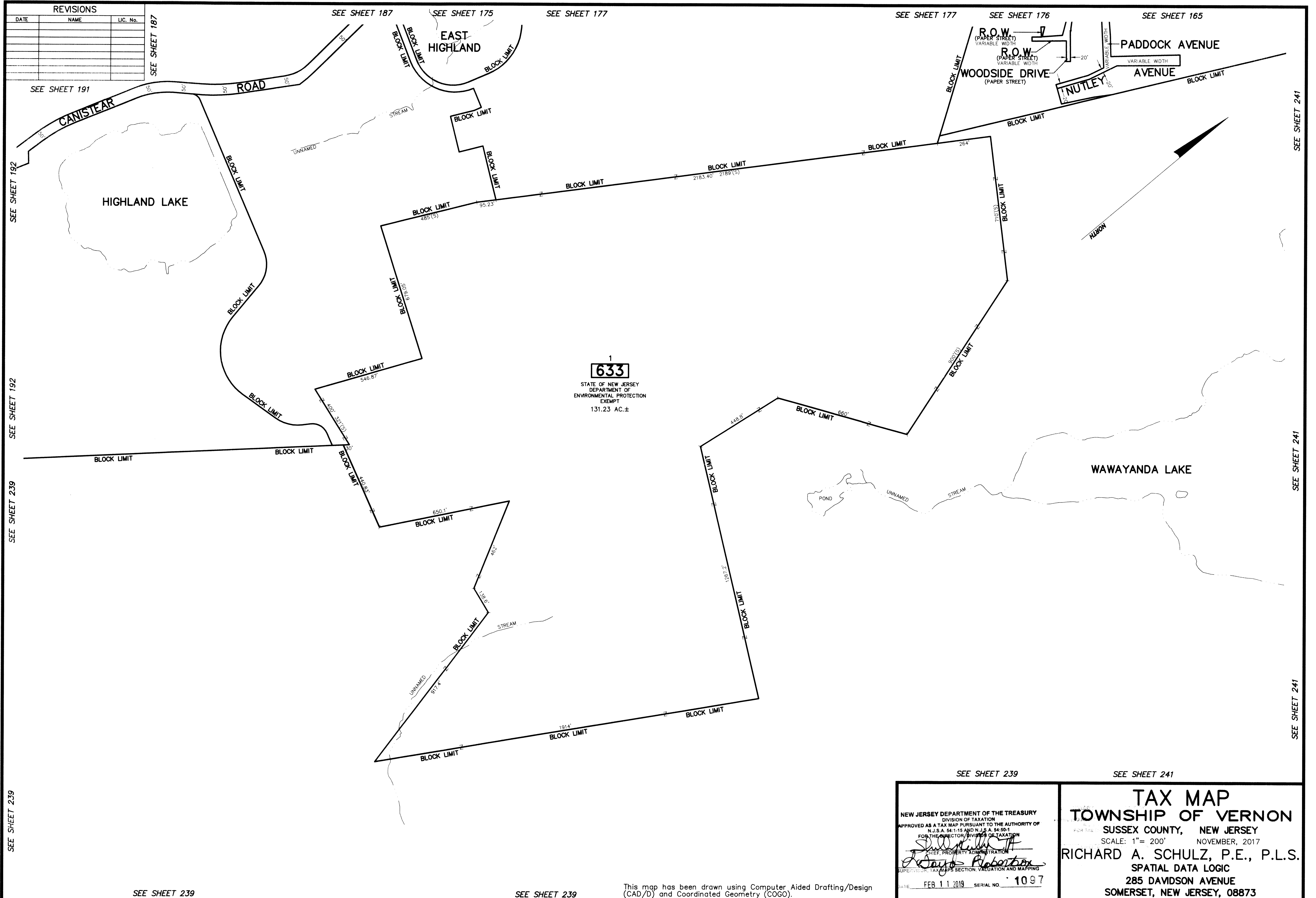


REVISIONS		
DATE	NAME	LIC. No.



1  
**633**  
 STATE OF NEW JERSEY  
 DEPARTMENT OF  
 ENVIRONMENTAL PROTECTION  
 EXEMPT  
 131.23 AC.±

SEE SHEET 192  
 SEE SHEET 192  
 SEE SHEET 239  
 SEE SHEET 239

SEE SHEET 241  
 SEE SHEET 241  
 SEE SHEET 241

SEE SHEET 239

SEE SHEET 239

This map has been drawn using Computer Aided Drafting/Design (CAD/D) and Coordinated Geometry (COGO).

<p>NEW JERSEY DEPARTMENT OF THE TREASURY          DIVISION OF TAXATION          APPROVED AS A TAX MAP PURSUANT TO THE AUTHORITY OF          N.J.S.A. 54:1-15 AND N.J.S.A. 54:50-1          FOR THE DIRECTOR, DIVISION OF TAXATION  <i>[Signature]</i>          CHIEF, PROPERTY ADMINISTRATION  <i>[Signature]</i>          SUPERVISOR, TAX MAPS SECTION, VALUATION AND MAPPING          DATE FEB 11 2019 SERIAL NO. 1097</p>	<p>SEE SHEET 239</p> <p>SEE SHEET 241</p> <p style="text-align: center;"><b>TAX MAP</b></p> <p style="text-align: center;"><b>TOWNSHIP OF VERNON</b></p> <p style="text-align: center;">SUSSEX COUNTY, NEW JERSEY</p> <p style="text-align: center;">SCALE: 1" = 200' NOVEMBER, 2017</p> <p style="text-align: center;">RICHARD A. SCHULZ, P.E., P.L.S.</p> <p style="text-align: center;">SPATIAL DATA LOGIC</p> <p style="text-align: center;">285 DAVIDSON AVENUE</p> <p style="text-align: center;">SOMERSET, NEW JERSEY, 08873</p>
--	---