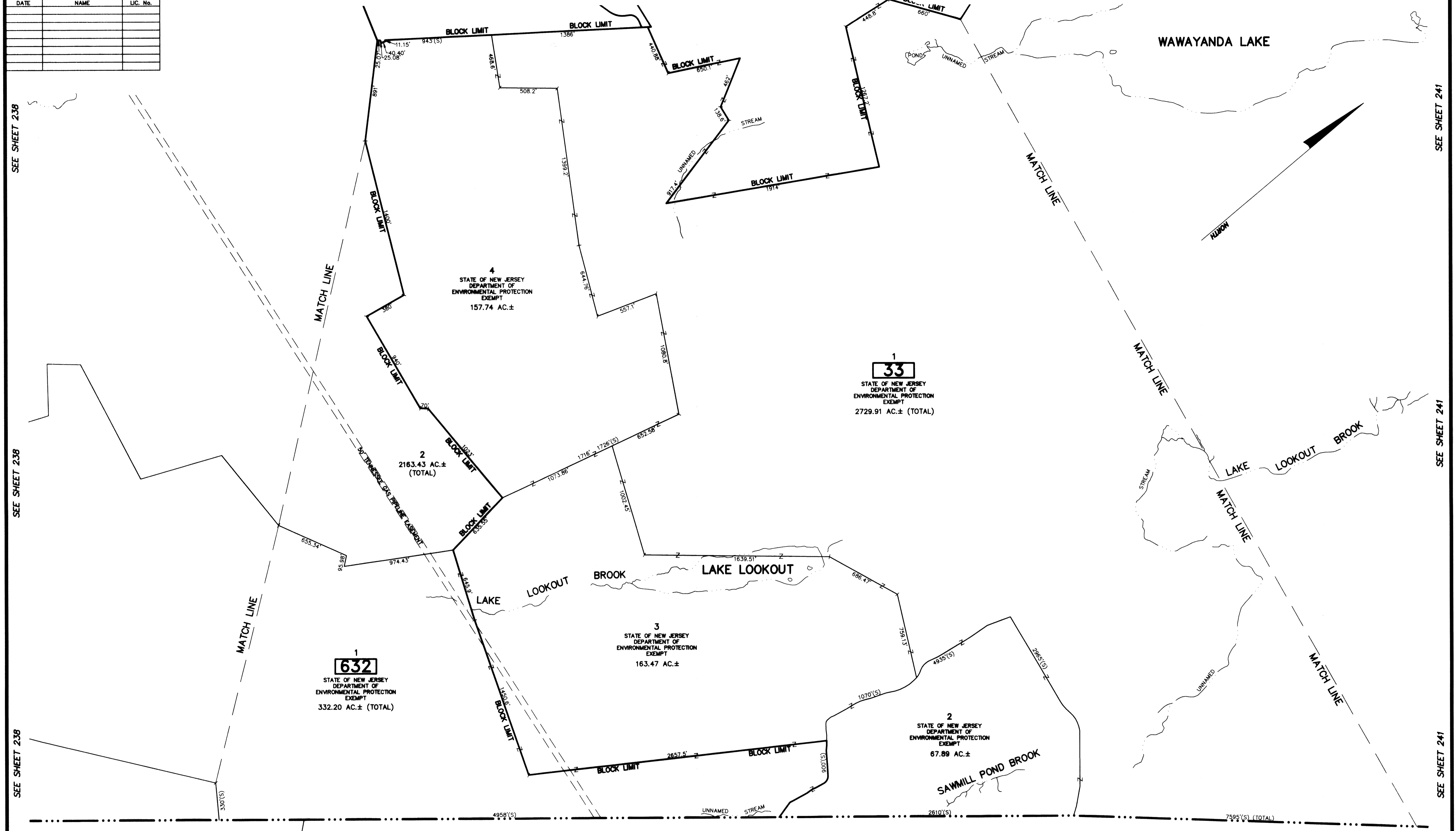


REVISIONS		
DATE	NAME	LIC. No.

SEE SHEET 238      SEE SHEET 192      SEE SHEET 192      SEE SHEET 240      SEE SHEET 240      SEE SHEET 241      SEE SHEET 241



**COUNTY OF PASSAIC  
WEST MILFORD TOWNSHIP**

This map has been drawn using Computer Aided Drafting/Design (CAD/D) and Coordinated Geometry (COGO).

NEW JERSEY DEPARTMENT OF THE TREASURY  
DIVISION OF TAXATION  
APPROVED AS A TAX MAP PURSUANT TO THE AUTHORITY OF  
N.J.S.A. 54:1-15 AND N.J.S.A. 54:1-16  
FOR THE DIRECTOR, DIVISION OF TAXATION  
*Richard A. Schulz*  
CHIEF, PROPERTY ADMINISTRATION  
*Richard A. Schulz*  
SUPERVISOR, TAX MAPS SECTION, VALUATION AND MAPPING  
DATE FEB 11 2019 SERIAL NO. 1097

**TAX MAP  
TOWNSHIP OF VERNON**  
SUSSEX COUNTY, NEW JERSEY  
SCALE: 1" = 400' NOVEMBER, 2017  
**RICHARD A. SCHULZ, P.E., P.L.S.**  
SPATIAL DATA LOGIC  
285 DAVIDSON AVENUE  
SOMERSET, NEW JERSEY, 08873

SEE SHEET 238

SEE SHEET 238

SEE SHEET 238

SEE SHEET 241

SEE SHEET 241

SEE SHEET 241