

SEE SHEET 234

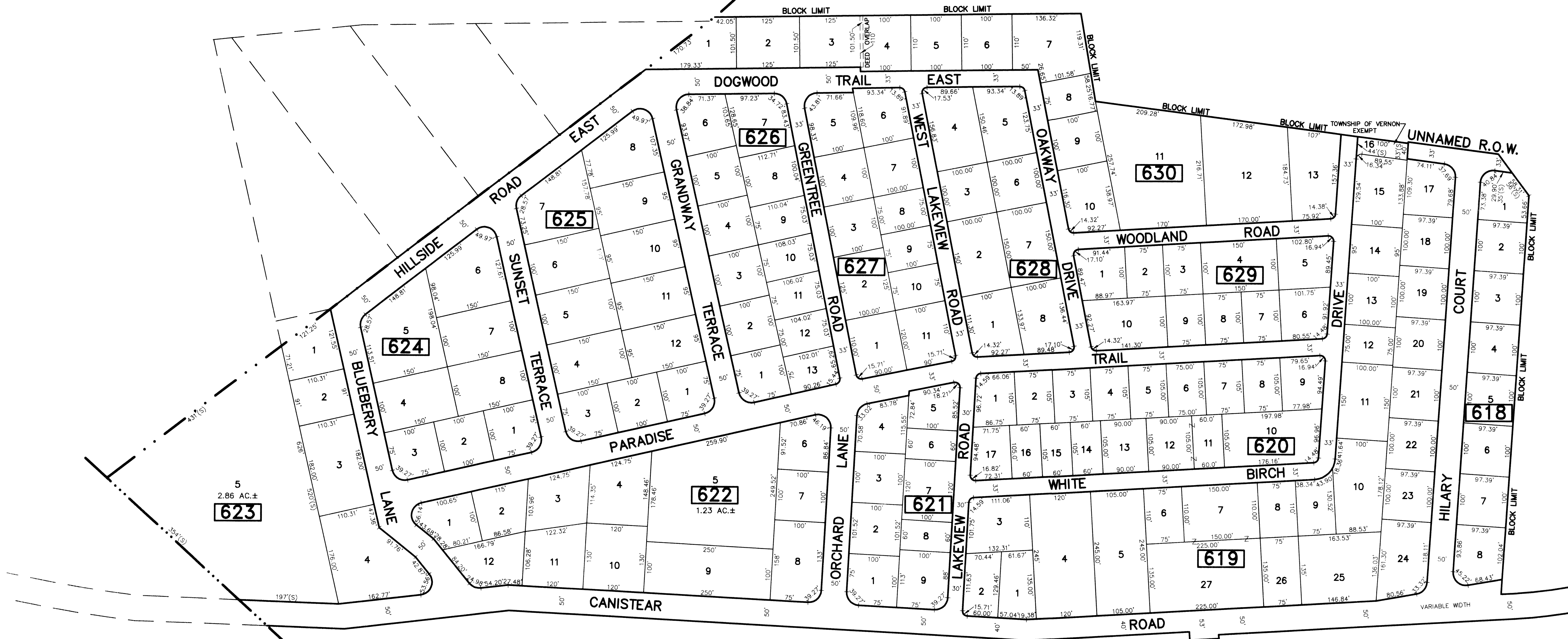
SEE SHEET 234

REVISIONS		
DATE	NAME	LIC. No.

COUNTY OF SUSSEX HARDYSTON TOWNSHIP

CANISTEAR RESERVOIR

HILTON



SEE SHEET 234

SEE SHEET 234

SEE SHEET 237

COUNTY OF PASSAIC WEST MILFORD TOWNSHIP

CLIFFWOOD LAKE

SEE SHEET 236

DEED OVERLAP	
BLOCK	LOT
630	3
630	4

THE OVERLAPPING LINES & DIMENSIONS SHOWN ARE PLOTTED IN ACCORDANCE WITH THE METES & BOUNDS DESCRIPTIONS APPEARING THE LAST DEED OF RECORD FOR EACH PARCEL & DO NOT PURPORT TO REPRESENT TITLE OR OWNERSHIP STATUS IN ANY MANNER. THESE SITUATIONS ARE SUBJECT TO SOLUTION BY THE PROPERTY OWNERS CONCERNED.

This map has been drawn using Computer Aided Drafting/Design (CAD/D) and Coordinated Geometry (COGO).

SEE SHEET 236

SEE SHEET 237

NEW JERSEY DEPARTMENT OF THE TREASURY
DIVISION OF TAXATION
APPROVED AS A TAX MAP PURSUANT TO THE AUTHORITY OF
N.J.S.A. 54:1-15 AND N.J.S.A. 54:5-9.1
FOR THE DIRECTOR, DIVISION OF TAXATION

Richard A. Schulz, P.E., P.L.S.
CHIEF, PROPERTY ADMINISTRATION

Deborah A. Robertson
SUPERVISOR, TAX MAPS SECTION, VALUATION AND MAPPING

DATE: FEB 11 2019 SERIAL NO. 1097

TAX MAP

TOWNSHIP OF VERNON

SUSSEX COUNTY, NEW JERSEY
SCALE: 1" = 100' NOVEMBER, 2017

RICHARD A. SCHULZ, P.E., P.L.S.
SPATIAL DATA LOGIC
285 DAVIDSON AVENUE
SOMERSET, NEW JERSEY, 08873