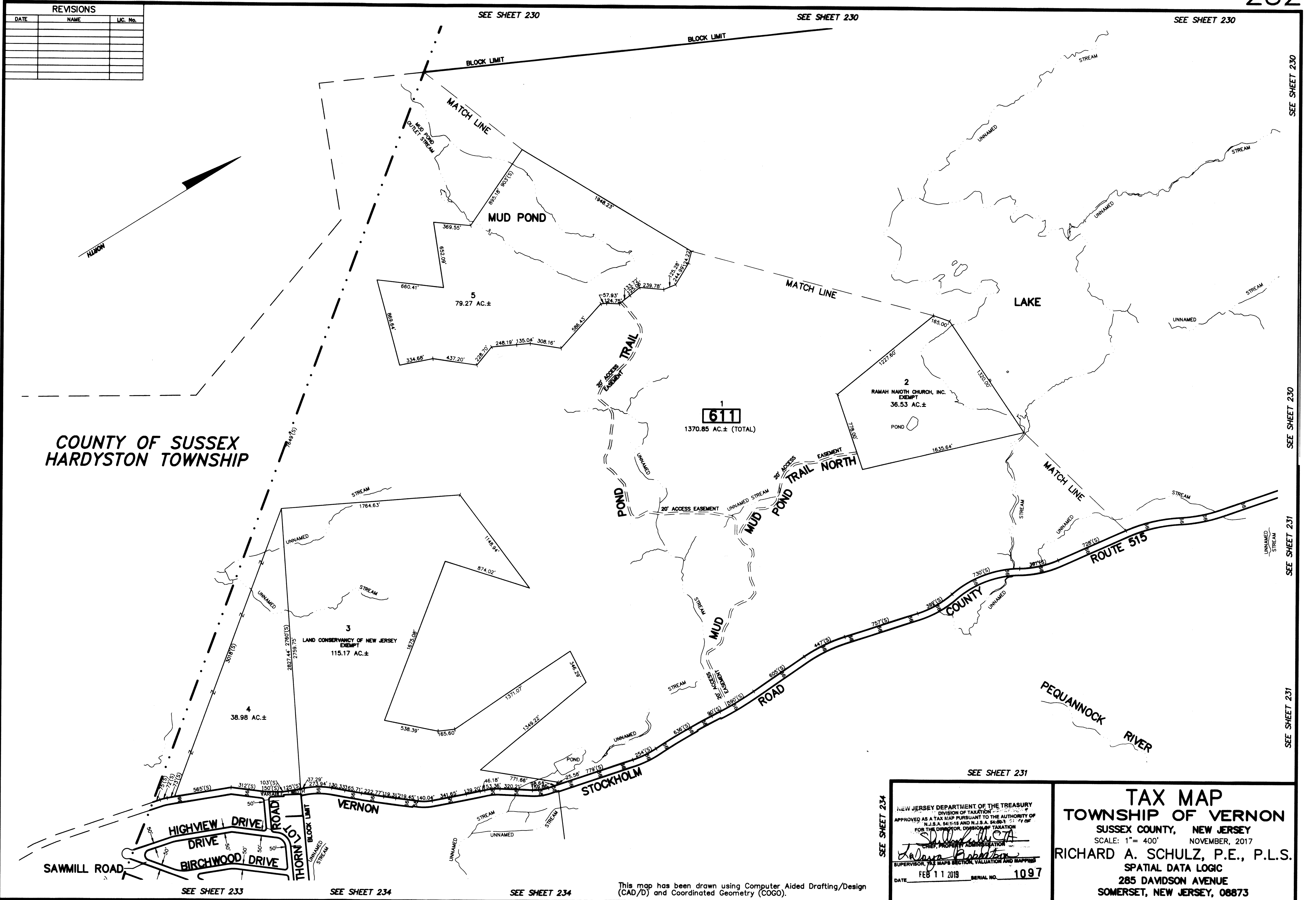


REVISIONS		
DATE	NAME	LC. No.



COUNTY OF SUSSEX
HARDYSTON TOWNSHIP

NEW JERSEY DEPARTMENT OF THE TREASURY
DIVISION OF TAXATION
APPROVED AS A TAX MAP PURSUANT TO THE AUTHORITY OF
N.J.S.A. 54:1-18 AND N.J.S.A. 54:28-11, 22, 24, 26
FOR THE SUPERVISOR, DIVISION OF TAXATION
[Signature]
SUPERVISOR, TAX MAPS SECTION, VALUATION AND MAPPING
DATE FEB 11 2019 SERIAL NO. 1097

TAX MAP
TOWNSHIP OF VERNON
SUSSEX COUNTY, NEW JERSEY
SCALE: 1" = 400' NOVEMBER, 2017
RICHARD A. SCHULZ, P.E., P.L.S.
SPATIAL DATA LOGIC
285 DAVIDSON AVENUE
SOMERSET, NEW JERSEY, 08873

This map has been drawn using Computer Aided Drafting/Design (CAD/D) and Coordinated Geometry (COGO).

SEE SHEET 233

SEE SHEET 234

SEE SHEET 234

SEE SHEET 231

SEE SHEET 230

SEE SHEET 230

SEE SHEET 231

SEE SHEET 231