

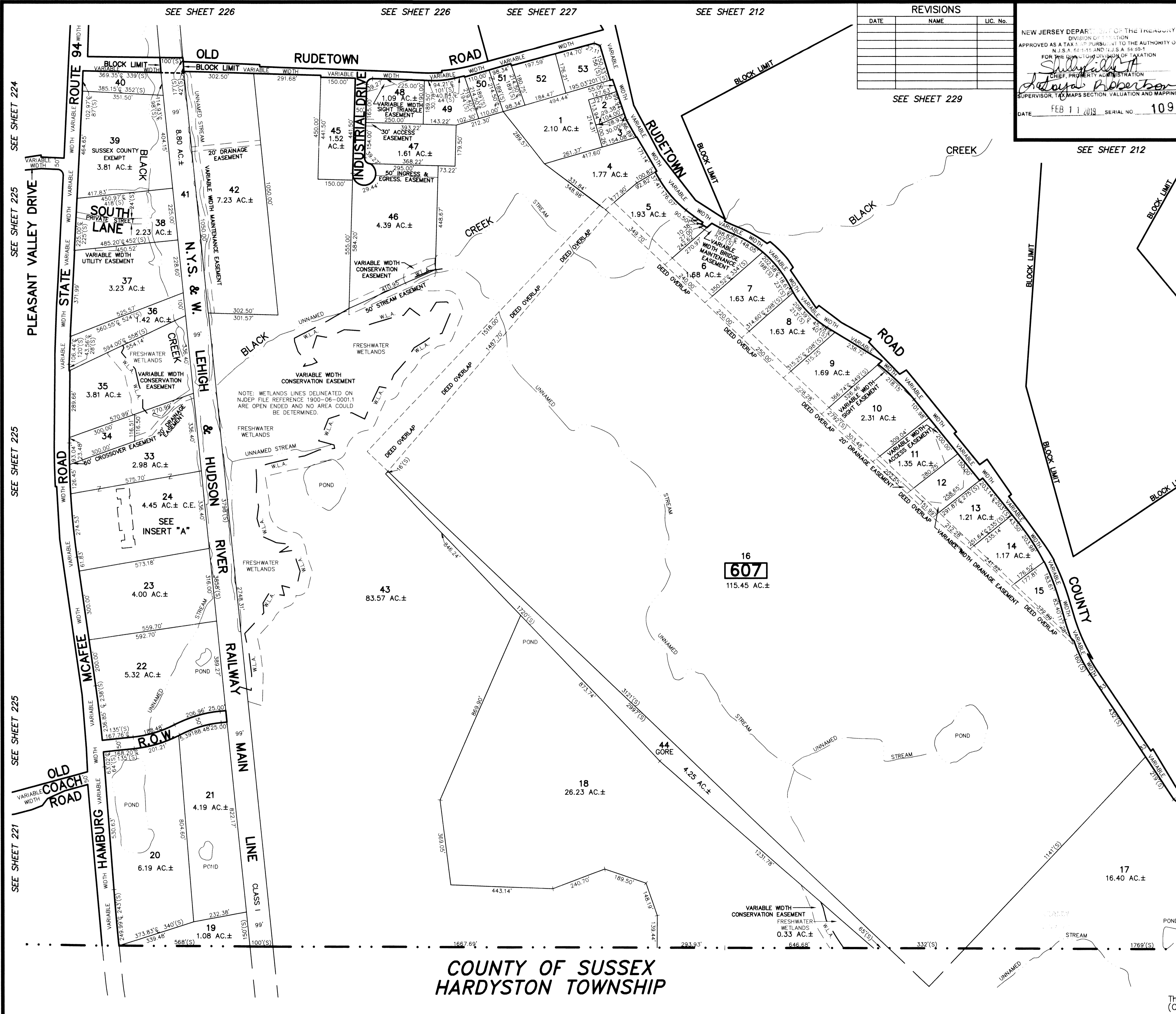
**TAX MAP**  
**TOWNSHIP OF VERNON**  
 SUSSEX COUNTY, NEW JERSEY  
 SCALE: 1" = 200' NOVEMBER, 2017  
**RICHARD A. SCHULZ, P.E., P.L.S.**  
 SPATIAL DATA LOGIC  
 285 DAVIDSON AVENUE  
 SOMERSET, NEW JERSEY, 08873

NEW JERSEY DEPARTMENT OF THE TREASURY  
 DIVISION OF TAXATION  
 APPROVED AS A TAX MAP PURSUANT TO THE AUTHORITY OF  
 N.J.S.A. 54:11-11 AND N.J.S.A. 54:11-11.1  
 FOR THE DIVISION OF TAXATION  
*Sally Falla*  
 CHIEF, PROPERTY ADMINISTRATION  
*Richard A. Schulz*  
 SUPERVISOR, TAX MAPS SECTION, VALUATION AND MAPPING  
 DATE: FEB 11 2018 SERIAL NO. 1097

REVISIONS

DATE	NAME	LG. No.

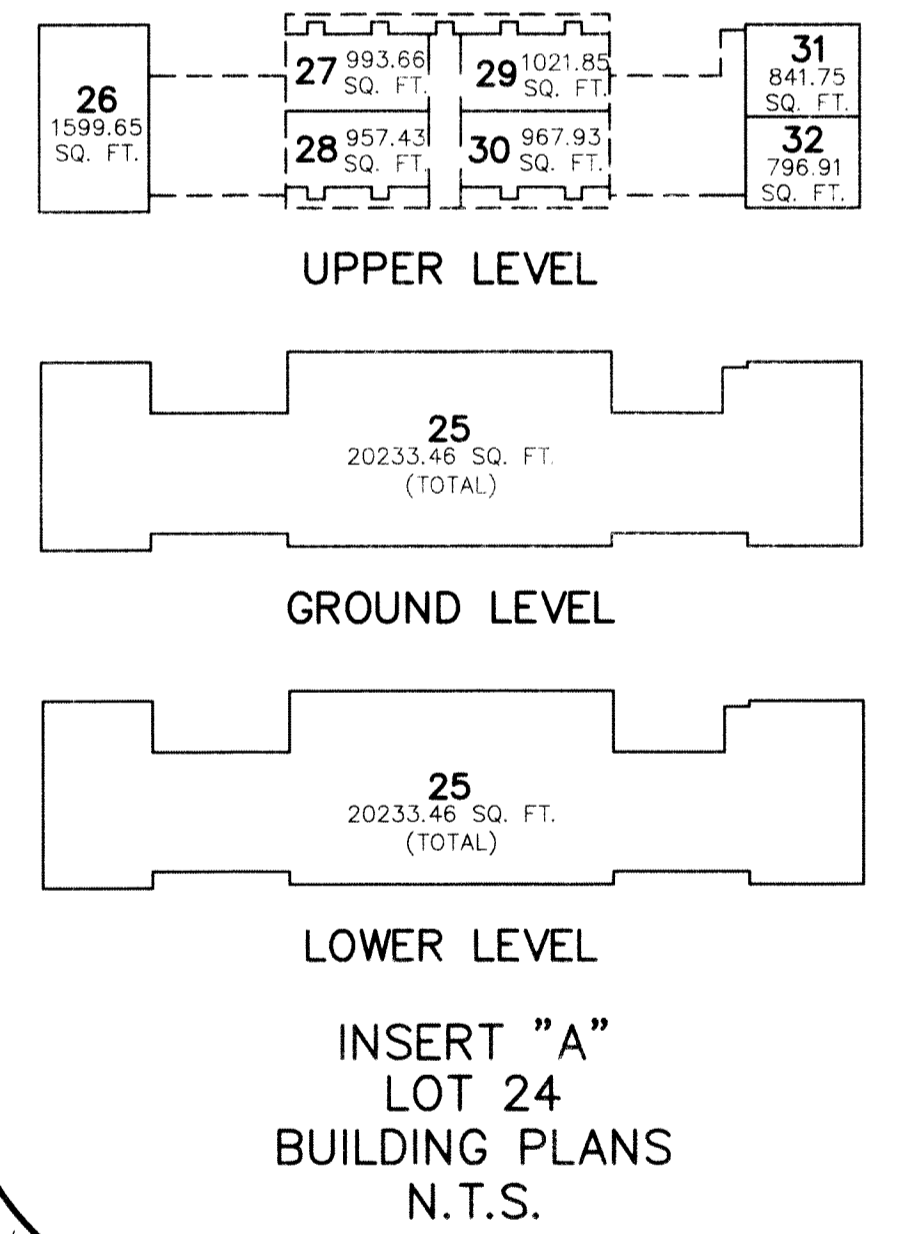
SEE SHEET 229



THE OVERLAPPING LINES & DIMENSIONS SHOWN ARE PLOTTED IN ACCORDANCE WITH THE METES & BOUNDS DESCRIPTIONS APPEARING THE LAST DEED OF RECORD FOR EACH PARCEL & DO NOT PURPORT TO REPRESENT TITLE OR OWNERSHIP STATUS IN ANY MANNER. THESE SITUATIONS ARE SUBJECT TO SOLUTION BY THE PROPERTY OWNERS CONCERNED.

DEED OVERLAP

BLOCK	LOT
607	4
607	5
607	6
607	7
607	8
607	9
607	10
607	11
607	12
607	13
607	14
607	15
607	16
607	43



**COUNTY OF SUSSEX**  
**HARDYSTON TOWNSHIP**

This map has been drawn using Computer Aided Drafting/Design (CAD/D) and Coordinated Geometry (COGO).