

REVISIONS		
DATE	NAME	L.C. No.

SEE SHEET 228

SEE SHEET 228

SEE SHEET 226

SEE SHEET 226

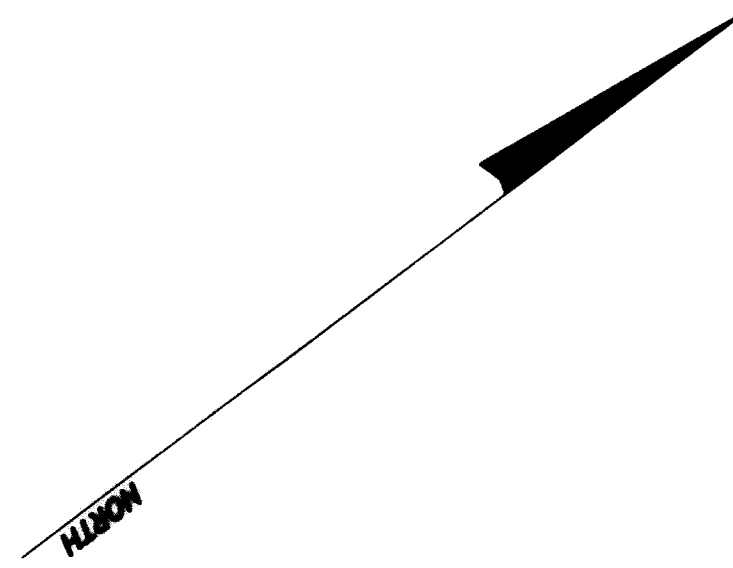
SEE SHEET 226

SEE SHEET 228

SEE SHEET 228

SEE SHEET 228

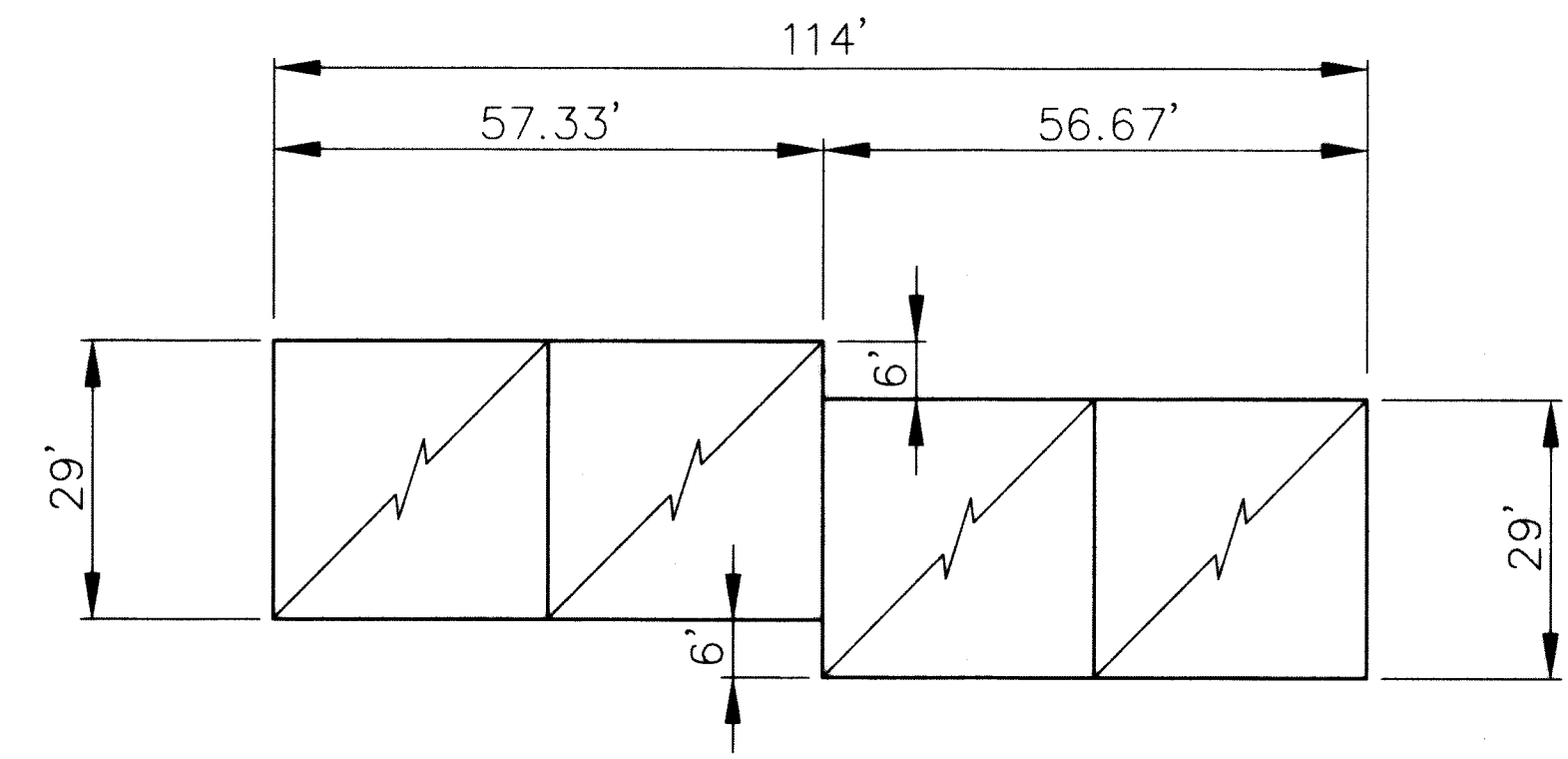
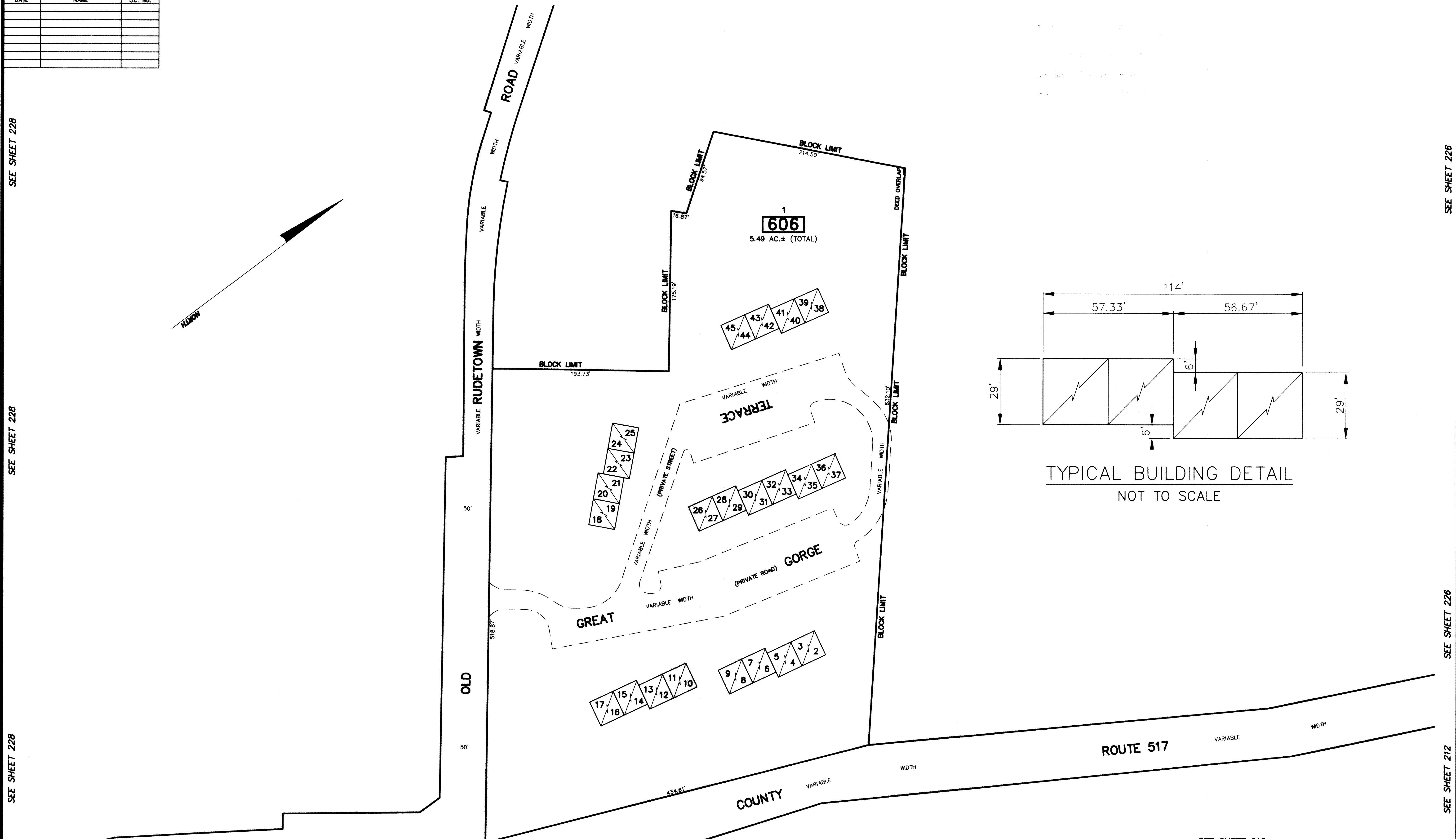
SEE SHEET 212



SEE SHEET 226

SEE SHEET 226

SEE SHEET 212



TYPICAL BUILDING DETAIL
NOT TO SCALE

NOTE: FOR ALL TWO LEVEL CONDOMINIUM UNITS
ODD LOT NUMBERS ARE FIRST FLOOR UNITS AND
EVEN LOT NUMBERS ARE SECOND FLOOR UNITS.

THE OVERLAPPING LINES & DIMENSIONS SHOWN ARE PLOTTED
IN ACCORDANCE WITH THE METES & BOUNDS DESCRIPTIONS
APPEARING THE LAST DEED OF RECORD FOR EACH PARCEL &
DO NOT PURPORT TO REPRESENT TITLE OR OWNERSHIP STATUS
IN ANY MANNER. THESE SITUATIONS ARE SUBJECT TO SOLUTION
BY THE PROPERTY OWNERS CONCERNED.

DEED OVERLAP	
BLOCK	LOT
605	17
606	1

This map has been drawn using Computer Aided Drafting/Design
(CAD/D) and Coordinated Geometry (COGO).

SEE SHEET 212

SEE SHEET 212

SEE SHEET 212

NEW JERSEY DEPARTMENT OF THE TREASURY
DIVISION OF TAXATION
APPROVED AS A TAX MAP PURSUANT TO THE AUTHORITY OF
N.J.S.A. 54:1-15 AND N.J.S.A. 54:50-1
FOR THE DIRECTOR, DIVISION OF TAXATION

[Signature]
CHIEF, PROPERTY ADMINISTRATION

[Signature]
SUPERVISOR, TAX MAPS SECTION, VALUATION AND MAPPING

DATE FEB 11 2019 SERIAL NO. 1097

TAX MAP
TOWNSHIP OF VERNON
SUSSEX COUNTY, NEW JERSEY
SCALE: 1" = 50' NOVEMBER, 2017

RICHARD A. SCHULZ, P.E., P.L.S.
SPATIAL DATA LOGIC
285 DAVIDSON AVENUE
SOMERSET, NEW JERSEY, 08873